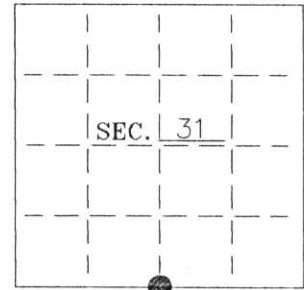


U. S. PUBLIC LAND SURVEY MONUMENT RECORD

Note: This form is intended and designed to fulfill all requirements of Wisconsin Administrative Code—Chapter A-E 7.08 U. S. Public Land Survey Monument Record (3)(a)(b)(c)(d)(e)(f)(g)(h)(i). An additional sheet may be added if necessary to conform with said requirements.

(a) CORNER LOCATION: State Plane Coordinates
S 1/4 corner of Sec. 31
 Township 35 North
 Range 7 East
 Town King County of Lincoln



(b) HISTORY OF ORIGINAL CORNER ESTABLISHMENT:
 Original Surveyor: Alfred Millard
 Date of Survey: Commenced 1860
 Completed 1860

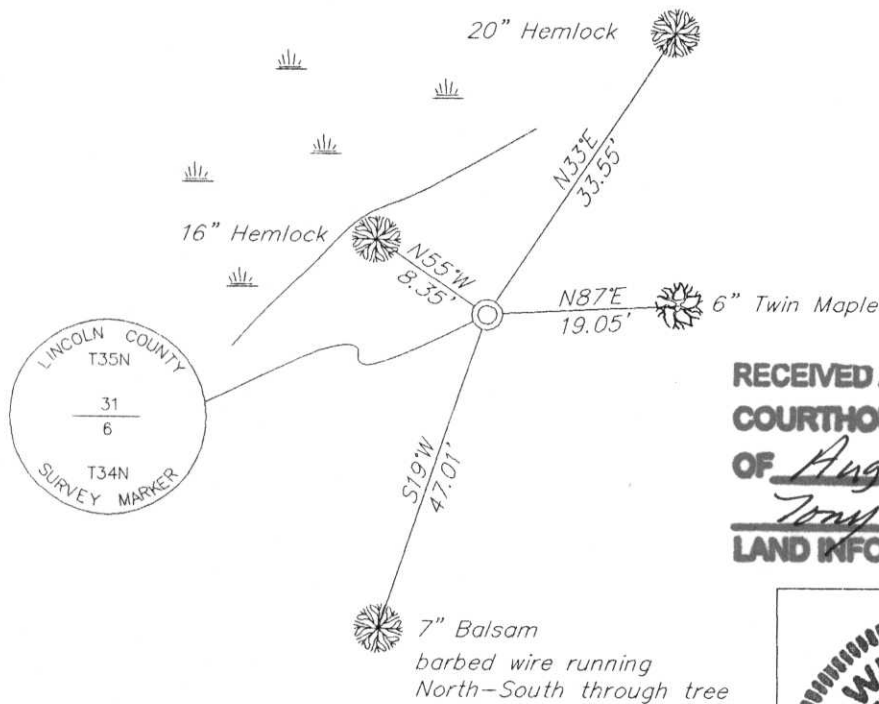
Original B.T.'S
 Tamarack 8" S66°E, 13 lks
 Birch 10" S9°W, 21 lks
 Tamarack 11" N80°W, 30 lks
 Birch 9" N54°E, 11 lks

(b)(f)(g)(h) Description of monument found at this corner and if it was accepted—state all evidence (material—testimonial—occupation—plats—records—other monuments) used as a basis for accepting. If not accepted or if nothing was found state evidence used as basis for establishing location. If reestablished through lost corner proportionate methods indicate all monuments—distances and directions used to establish. Indicate type of monument and sign post found or set.

1984— On a drawing by W.H. Stuth(O-I) dated 3/6/87, he shows an "iron pipe or cap" at a proportioned location.

2001— I did not find any evidence of the corner. I reproportioned the corner from the Southwest corner of Section 31 and the South 1/4 corner of Section 32 and set a Berntsen monument. See sketch below.

(c)(d)(e) Plan view of corner with ties to at least 4 witness monuments. If in disagreement with previously established corner—show the distances between the two corners and also indicate the ties to the disputed.



**RECEIVED AT LINCOLN COUNTY
 COURTHOUSE THIS 21ST DAY
 OF August 20 01
Tony Damm
LAND INFORMATION OFFICE**



(i) I Charles E. Winkler S-1431
 hereby certify that the corner location on this record was determined by me or under my direction and control and that this U.S. Public Land Survey Monument Record is correct and complete to the best of my knowledge and belief.

Charles E. Winkler 8/16/2001
 Signature Foltz and Associates, Inc. Date

INDEX NO. 4-3