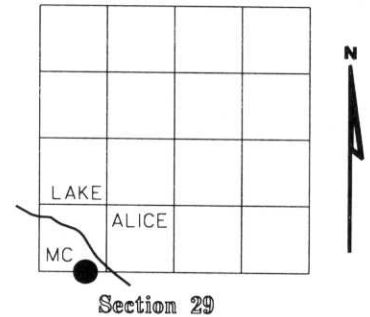


U.S. PUBLIC LAND SURVEY MONUMENT RECORD

NOTE: This form is intended and designed to fulfill all requirements of Wisconsin Administrative Code, Chapter A-E 7.08 U.S. Public Land Survey Monument Record (S)(a)(b)(c)(d)(e)(f)(g)(h)(i). An additional sheet may be added if necessary to conform with said requirements.

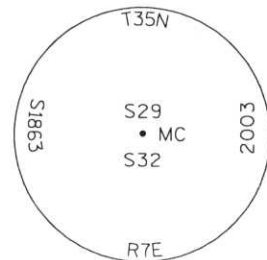
(a) Corner location: Township 35 North
 Range 07 East
 Town of KING
 LINCOLN County, Wisconsin



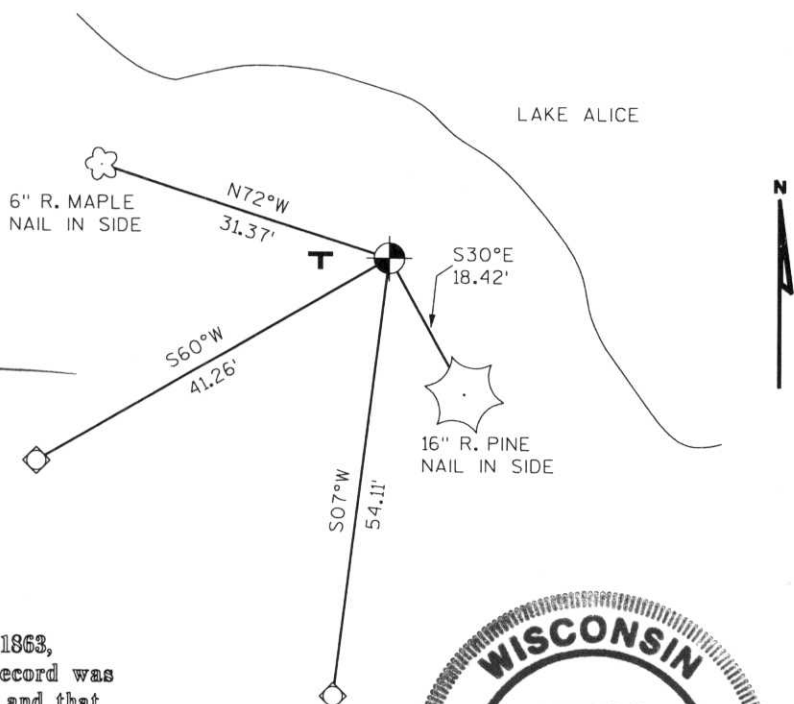
(b)(f)(g)(h) Description of monument found at this corner and if it was accepted, state all evidence (material, testimonial, occupational, plats, records, other monuments) used as a basis for accepting. If not accepted or if nothing was found, state evidence used as basis for establishing location. If reestablished through lost corner proportionate methods, indicate all monuments, distances and directions used to establish. Indicate type of monument found or set and sign post.

- 1861 - Alfred Millard No corner set
- 1958- Robert A. Sayers Sr. calls for iron pipe at the M.C.
- 1963- Genisot Engineers map no. 3221 calls for iron pipe by others
- 1976- Robert H. Winat found 1 1/2" iron pipe, accepts as M.C.
- 2003- I found 1 1/2" dia. iron pipe replaced with Lincoln County Bernsten monument.

Witnessed as shown below.



(c)(d)(e) Plan view of corner with ties to at least 4 witness monuments. If in disagreement with previously established corner, show the distances between the two corners and also indicate the ties to the disputed corner.



RECEIVED AT LINCOLN COUNTY
 COURTHOUSE THIS 17TH DAY
 OF July 20 03
John Dalko
 LAND INFORMATION OFFICE

- SET LINCOLN COUNTY BERNSTEN MONUMENT
- ◇ SET 3/4" DIA. ROD WITH ALUMINUM CAP
- T PLASTIC "T" SIGN POST WEST, 2'

(i) I, Dennis Roberts, Registered Land Surveyor #S-1863, hereby certify that the corner location on this record was determined by me or under my direction and control and that this U.S. Public Land Survey Monument Record is correct and complete to the best of my knowledge and belief.

Dennis B. Roberts
 Signature Date 7/02/03



Index No. *****

0, 5-6



100
90
80
70
60
50
40
30
20
10
0

MC
K34