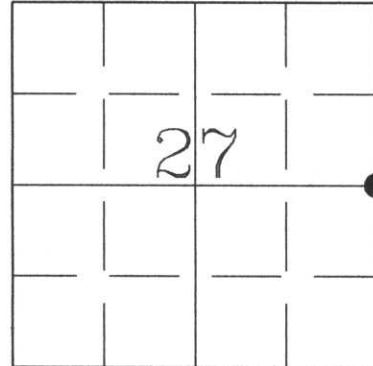


# U.S. PUBLIC LAND SURVEY MONUMENT RECORD

HISTORY OF ORIGINAL CORNER ESTABLISHMENT AND SUBSEQUENT RESTORATION AND DESCRIPTION OF ANY RECORD, MONUMENT OCCUPATIONAL, TESTIMONIAL OR OTHER EVIDENCE CONSIDERED:

Original Gov't Survey: June 1861 by Alfred Millard. In 1979, Lincoln Co. Hwy Commissioner Duane Gau placed a 1" iron pin at 1/4 corner location with two reference trees. In 1988, Lester Schmit found Gau's 1" iron pin and the two reference trees and replaced the pin with a Bernsten Monument. In March of 2001, Charley Brinkmeier and Gerry Bahar dug in road by hand and found the Bernsten Monument under the pavement, bearing trees were gone. We set a 1" iron pipe over the monument and retied.

● = LOCATION OF CORNER



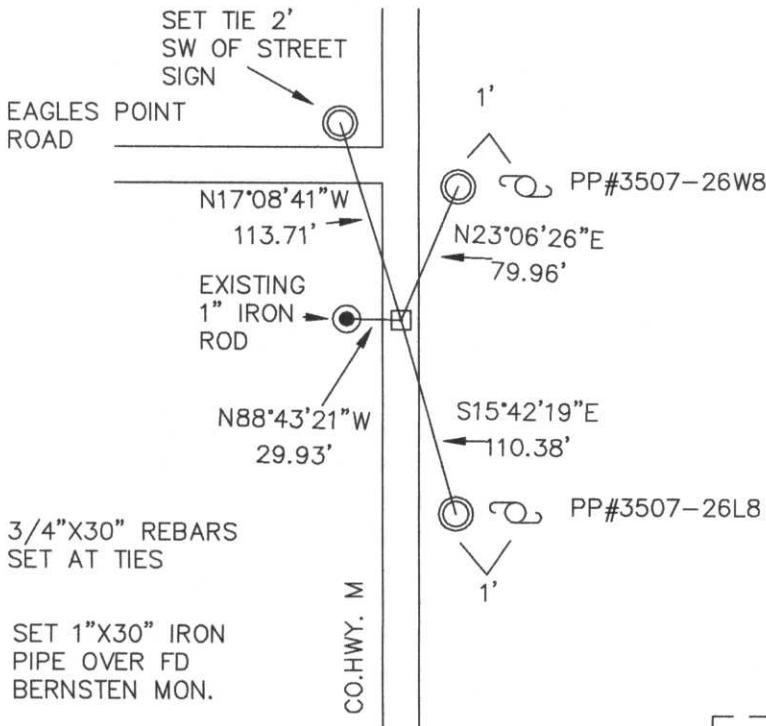
SECTION 27  
 TOWNSHIP 35 NORTH, RANGE 7 EAST  
 TOWN OF KING  
LINCOLN COUNTY, WISCONSIN

CORNER WAS: (CHECK ALL THAT APPLY)

- RESTORED THROUGH ACCEPTANCE OF AN OBLITERATED EVIDENCE LOCATION
- RESTORED THROUGH ACCEPTANCE OF A FOUND PERPETUATED LOCATION
- CONSIDERED A LOST CORNER AND REESTABLISHED THROUGH LOST CORNER PROPORTIONATE METHODS (INCLUDE A PLAN VIEW DRAWING SHOWING DISTANCES AND DIRECTIONS TO OTHER PUBLIC LAND SURVEY CORNERS USED FOR PROPORTIONING AND DETERMINING THE CORNER LOCATION)
- RESTORED OR REESTABLISHED IN A LOCATION THAT DIFFERS FROM A PREVIOUS RESTORATION OR REESTABLISHMENT (INCLUDE A PLAN VIEW DRAWING AND INDICATE WHAT WAS SET AND/OR FOUND)
- CHECK IF THERE IS ADDITIONAL INFORMATION ON BACK

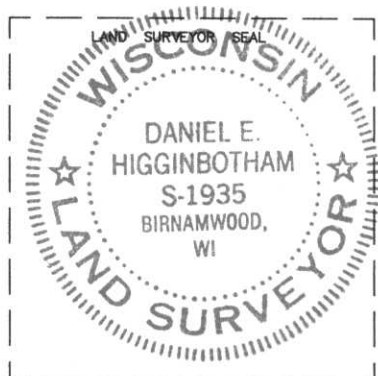
DESCRIBE THE MONUMENT AND ACCESSORIES USED TO PERPETUATE THE LOCATION OF THE CORNER. (INCLUDE A PLAN VIEW DRAWING AND INDICATE WHAT WAS SET AND/OR FOUND) ALSO INCLUDE FOUR TIES TO THE SECTION CORNER AND DESCRIPTION OF THE TIES.

RECEIVED AT LINCOLN COUNTY  
 COURTHOUSE THIS 20<sup>TH</sup> DAY  
 OF February 20 02  
 LAND INFORMATION OFFICE



- 3/4"X30" REBARS SET AT TIES
- SET 1"X30" IRON PIPE OVER FD BERNSTEN MON.

DANIEL E. HIGGINBOTHAM  
 (type or print name) CERTIFY THAT THE CORNER LOCATION SHOWN ON THIS RECORD WAS DETERMINED BY ME OR UNDER MY DIRECTION AND CONTROL AND THAT THIS U.S. PUBLIC LAND SURVEY MONUMENT RECORD IS CORRECT AND COMPLETE TO THE BEST OF MY KNOWLEDGE AND BELIEF.  
 \_\_\_\_\_  
 SIGNATURE 2/19/02  
 DATE



INDEX NO. \_\_\_\_\_

S-17

# U.S. PUBLIC LAND SURVEY MONUMENT RECORD

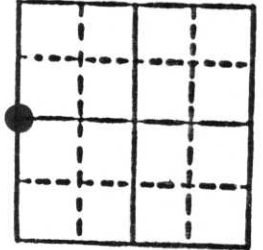
**Note:** This form is intended and designed to fulfill all requirements of Wisconsin Administrative Code, Chapter A-E 5.02, U.S. Public Land Survey Monument Record (3) (a) (b) (c) (d) (e) (f) (g) (h) (i). An additional sheet may be added if necessary to conform with said requirements.

(a) Corner location: Township 35 North

Range 7 East

Town King

County Lincoln

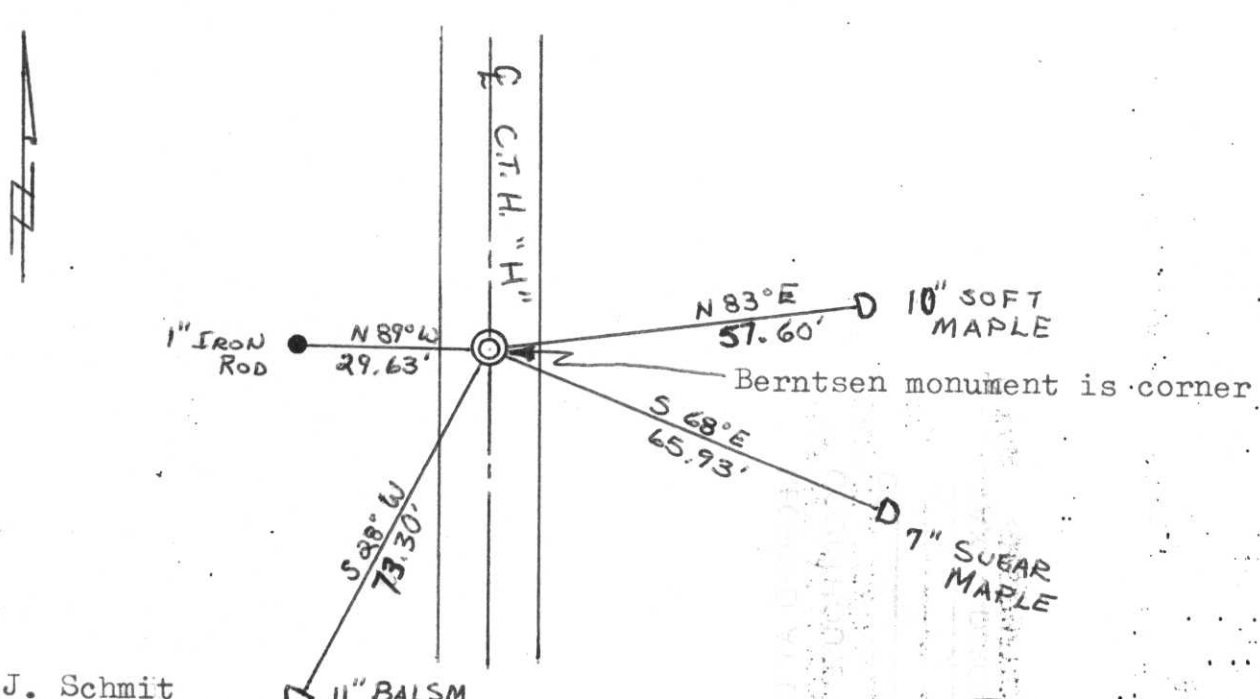


Section 26

b) (f) (g) (h) Description of monument found at this corner and if it was accepted, state all evidence (material, testimonial, occupational, plats, records, other monuments) used as a basis for accepting. If not accepted or if nothing was found, state evidence used as basis for establishing location. If reestablished through lost corner proportionate methods, indicate all monuments, distances and directions used to establish.

Original Gov't. Survey: June 1861 by Alfred Millard, set wood post for corner with bearings, sugar maple 6 S 70° W 15 links & white pine 12 S 40° E 15 links. I found the 1" iron pin placed by the Lincoln County Highway Commissioner, Duane A. Gau in 1979 after the reconstruction of County Trunk Highway "H". The 10" soft maple to the Northeast and the 11" balsm to the Southwest are old reference trees by Gau and helped verify the corner location. Set Berntsen monument to replace 1" iron pin.

c) (d) (e) Plan view of corner with ties to at least 4 witness monuments. If in disagreement with previously established corner, show the distances between the two corners and also indicate the ties to the disputed corner.



(i) I, Lester J. Schmit

(type or print name) certify that the corner location on this record was determined by me or under my direction and control and that this U.S. Public Land Survey Monument Record is correct and complete to the best of my knowledge and belief.

Lester J. Schmit 7 Nov. 88  
Signature Date



Index No. S-17

CERTIFIED LAND CORNER RESTORATION

Index No. S-17

State of Wisconsin }  
County of Lincoln } ss.

History of original corner establishment:

I Duane A. Gau, do hereby  
certify that on the 11 day  
of October, 1979, I found  
evidence of the W 1/4  
corner of Section 26  
Township 35, North, Range  
7E, Fourth, Principal Meridian,  
as described hereon; and that from this evidence  
I established a new monument and accessories  
as described hereon to perpetuate the original  
location of this corner.

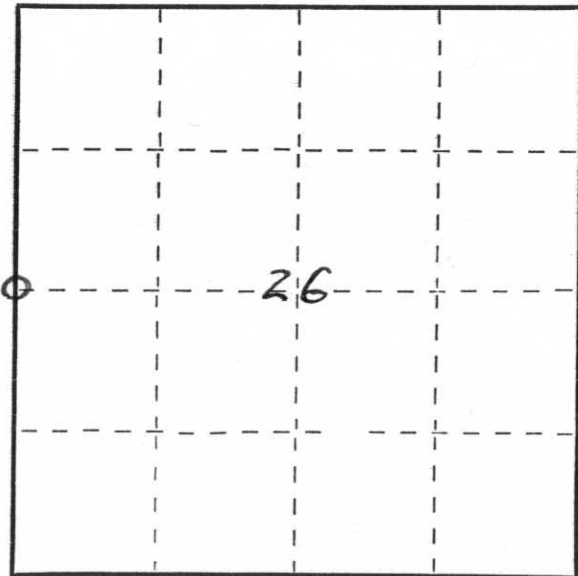
Description of corner evidence found:

Located spike  $\epsilon$  of paved surface of road.

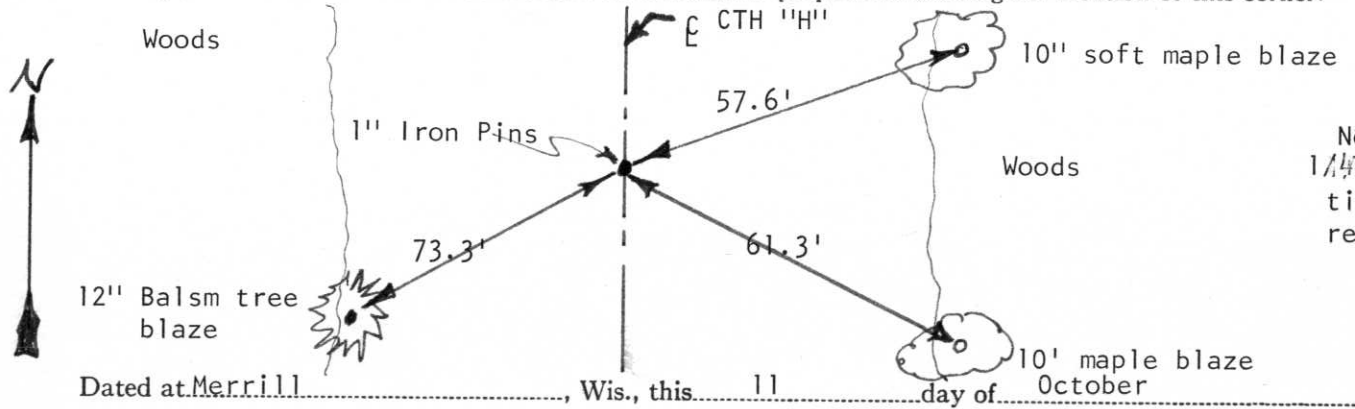
Resident witnesses:

.....  
.....  
.....

Description of monument and accessories I established to perpetuate the original location of this corner.



○ = Corner monument restored.



Note: Reset  
1/4 & set witness  
ties because of  
reconstruction.

Dated at Merrill, Wis., this 11 day of October, 1979

Signature: Duane A. Gau Title Lincoln Cty. Hwy. Commissioner Registration No. ....  
(County Surveyor, Registered Land Surveyor, or other duly authorized official)

Office of Register of Deeds, County of ....., I hereby certify that the within  
instrument was filed in this office for record on the ..... day of ....., 19.....  
at ..... o'clock ..... M.

.....  
(Register of Deeds)

By ..... Deputy



27 12:09 PM



27 12:14 PM



27 12:15 PM