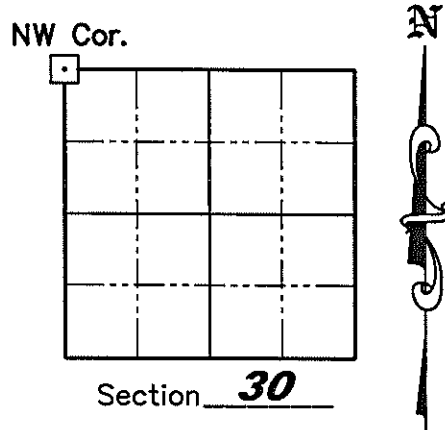


# U.S. PUBLIC LAND SURVEY MONUMENT RECORD

NOTE: This form is intended and designed to fulfill all requirements of Wisconsin Administrative Code, Chapter A-E 7 .08 U.S. Public Land Survey Monument Record (3)(a)(b)(c)(d)(e)(f)(g)(h)(i). An additional sheet may be added if necessary to conform with said requirements.

(a) Corner location: Township 35 North  
 Range 8 East/West  
 Town of Harrison  
 County of Lincoln



(b)(f)(g)(h) Description of monument found at this corner and if it was accepted, state all evidence (material, testimonial, occupation, plats, records, other monuments) used as a basis for accepting. If not accepted or if nothing was found, state evidence used as a basis for establishing location. If reestablished through lost corner proportionate methods, indicate all monuments, distances and directions used to establish. Indicate type of monument found or set and sign post.

August/September 1860 – Alfred Millard set original Section post; BT's: 6" Spruce, S59°E, 26 links; 6" Spruce, N18°E, 13 links; 6" Spruce, S18°W, 26 links; 6" Tamarack, N58°W, 21 links.

1937 – Francis Fuchs set 6" by 6" Granite Stone Monument; BT's: 2" Spruce, N64°E, 132.9 links (87.71 feet) (tree found laying on its side); 2" Aspen, S67°E, 43.79 links (28.90 feet). (See Plat of Survey with a Lincoln County Land Information Office Map Number of L280A.)

September 15, 2008 – Jonathan W. Dulin found and accepted a 6" by 6" Granite Stone Monument up 1-1/2'. We set new witness corners as shown on Sheet 2 hereof.

(c)(d)(e) Plan view of corner with ties to at least 4 witness monuments. If in disagreement with previously established corner, show the distances between the two corners and also indicate the ties to the disputed corner.

## See Sheet 2 hereof

(i) I, Jonathan W. Dulin, certify that the corner location on this record was determined by me under my direction and control and that this U.S. Public Land Survey Monument is correct and complete to the best of my knowledge and belief.

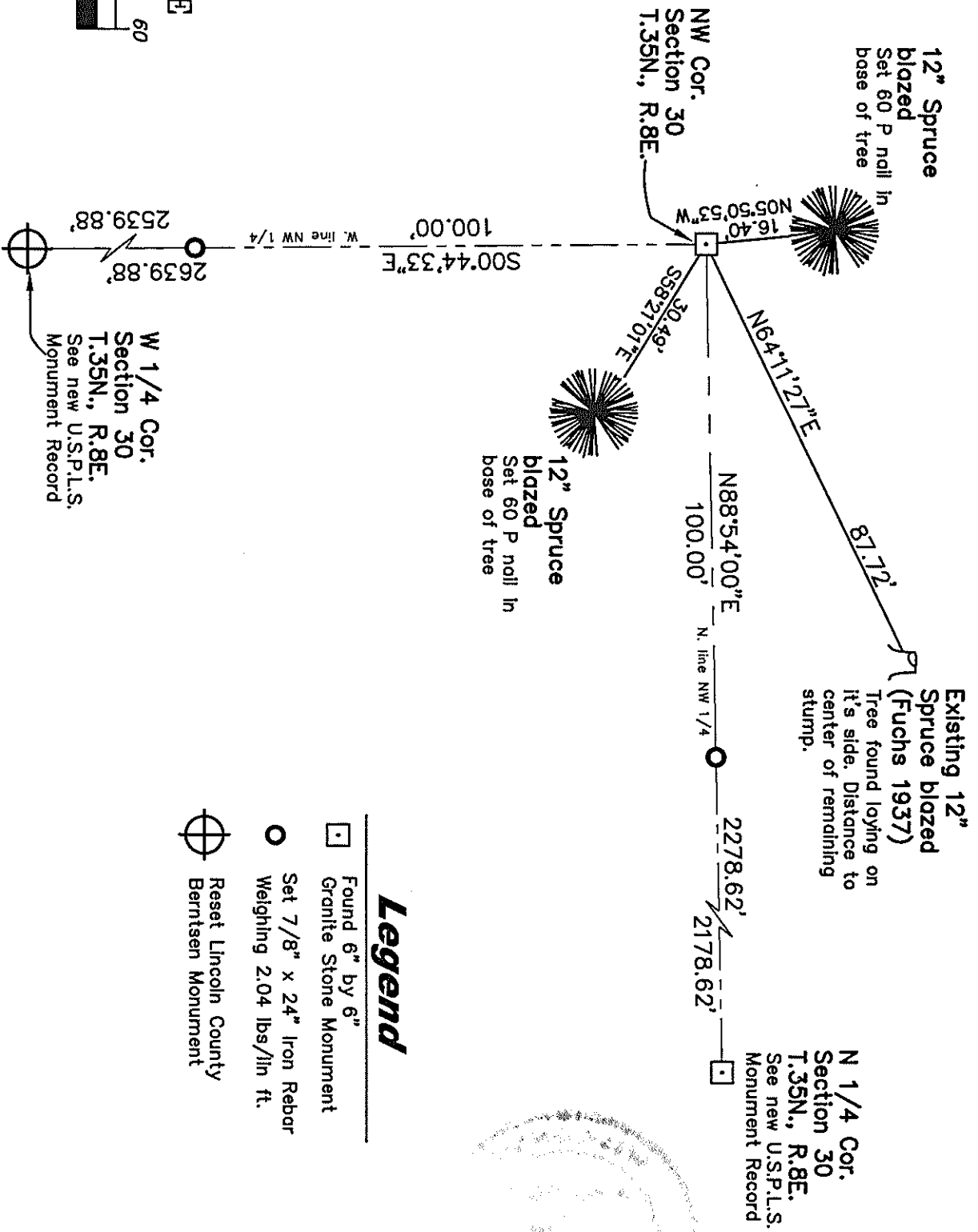
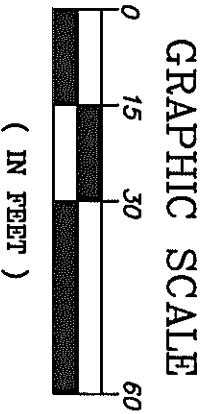
RECEIVED BY LINCOLN COUNTY  
 SURVEYOR THIS 28<sup>TH</sup> DAY  
 OF October 20 08  
Jonathan W. Dulin  
 COUNTY SURVEYOR

Jonathan W. Dulin  
 Signature

9/24/08  
 Date

Index No. Q-1

# U.S. PUBLIC LAND SURVEY MONUMENT RECORD



## Legend

- Found 6" by 6" Granite Stone Monument
- Set 7/8" x 24" Iron Rebar Weighing 2.04 lbs/lin ft.
- Reset Lincoln County Bernitsen Monument

