

U.S. PUBLIC LAND SURVEY MONUMENT RECORD

NOTE: This form is intended and designed to fulfill all requirements of Wisconsin Administrative Code, Chapter A-E 7.08 U.S. Public Land Survey Monument Record. An additional sheet may be added if necessary to conform with said requirements.

CORNER LOCATION

Quarter Corner common to Sections 19 and 30
Township 35 North, Range 7 East of the 4th P.M.
Town of King, Lincoln County, Wisconsin

6	5	4	3	2	1
7	8	9	10	11	12
18	17	16	15	14	13
19	20	21	22	23	24
●	29	28	27	26	25
31	32	33	34	35	36

TxxN - RxE
35 - 7

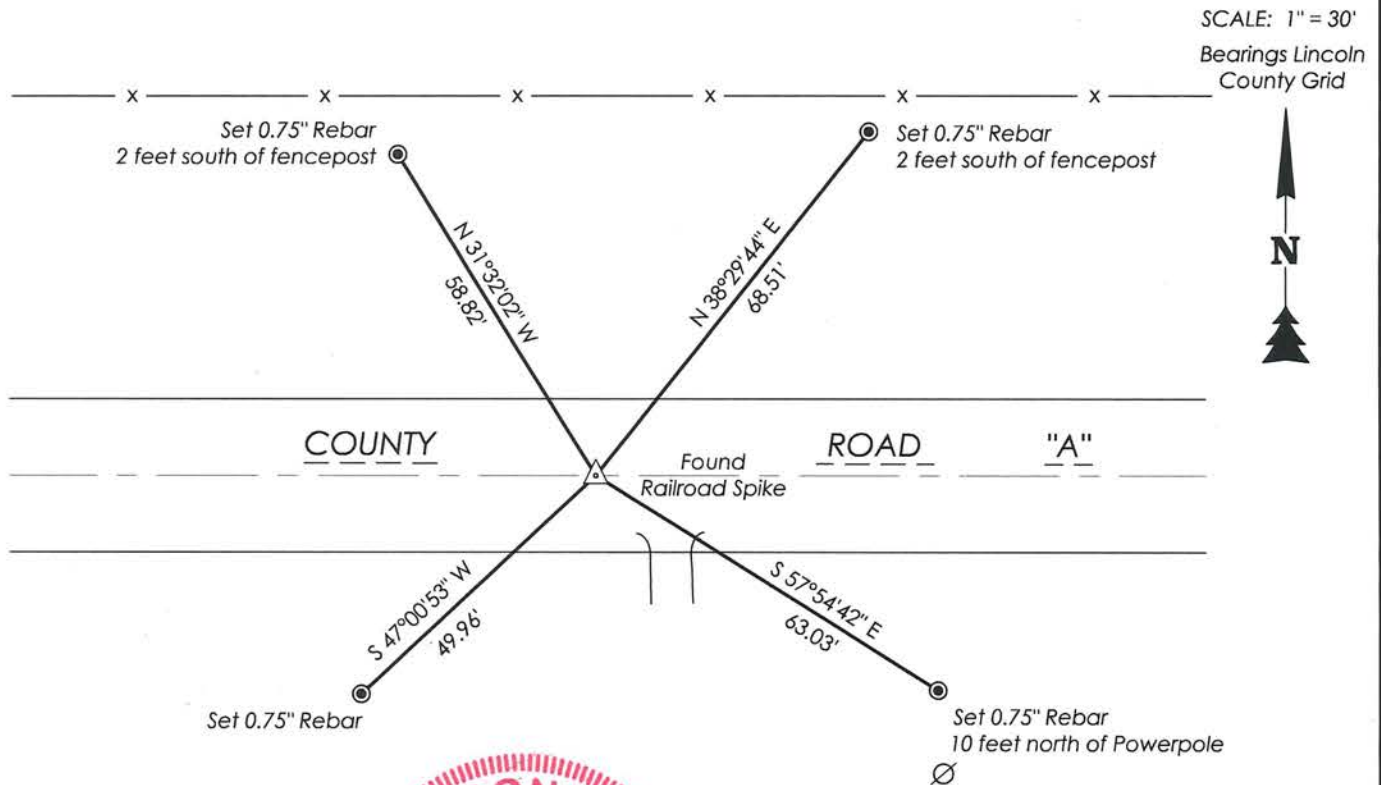
HISTORY OF ORIGINAL CORNER ESTABLISHMENT

ORIGINAL SURVEYOR: Alfred Millard
DATE OF SURVEY: June 1861 - July 1861
ORIGINAL ACCESSORIES: At 40.51 ch, set quarter post
10" Sp. Pine, S22°W, 17 lks
5" Yellow Pine, N68°W, 13 lks

DESCRIPTION OF MONUMENT FOUND AT THIS CORNER AND IF IT WAS ACCEPTED, STATE ALL EVIDENCE (MATERIAL, TESTIMONIAL, OCCUPATIONAL, PLATS, RECORDS, OTHER MONUMENTS) USED AS A BASIS FOR ACCEPTING. IF NOT ACCEPTED OR IF NOTHING WAS FOUND, STATE EVIDENCE USED AS BASIS FOR ESTABLISHING LOCATION. IF RE-ESTABLISHED THROUGH LOST CORNER PROPORTIONATE METHODS, INDICATE ALL MONUMENTS, DISTANCES AND DIRECTIONS USED TO ESTABLISH. INDICATE TYPE OF MONUMENT AND SIGN POST FOUND OR SET.

6/27/2017 I visited corner location and found a railroad spike just under the surface of the blacktop at the center of the road. Numerous survey records indicated that the corner was monumented previously by an axel shaft as shown on Mable Highlands plat, Pine Shore Acres plat, and Maps #L48A, L60B, and L39A, to name a few. The location of the railroad spike found matches that of the axel shaft referenced on said maps. I believe that the axel shaft that was in existence in the 1970's during those surveys was replaced with the railroad spike. Accepted railroad spike as being at the corner location and set four ties to 0.75" x 24" rebars as ties to the corner. Measured all as shown below. Corner was tied out in conjunction with a retracement survey of Lot 2 of CSM # 100, completed on 6/28/2017.

PLAN VIEW OF CORNER WITH TIES TO AT LEAST 4 WITNESS MONUMENTS. IF IN DISAGREEMENT WITH PREVIOUSLY ESTABLISHED CORNER, SHOW THE DISTANCES BETWEEN THE TWO CORNERS AND ALSO INDICATE THE TIES TO THE DISPUTED.



RECEIVED BY LINCOLN COUNTY
SURVEYOR THIS 3RD DAY
OF July 20 17
Tammy Daff
COUNTY SURVEYOR

I, Emily K. Pierce, Professional Land Surveyor No. S-2728, hereby certify that the corner location on this record was determined by me or under my direction and control and that this U.S. Public Land Survey Monument Record is correct and complete to the best of my knowledge and belief.

Emily K. Pierce
Emily K. Pierce, PLS No. S-2728
STEIGERWALDT LAND SURVEYING, LLC

D-3