

U S PUBLIC LAND SURVEY MONUMENT RECORD

NOTE: This form is intended and designed to fulfill all requirements of Wisconsin Administrative Code, Chapter A-E 7.08 U.S. Public Land Survey Monument Record (3) (a-i)

A-E 7.08(3)(a) Identity of corner:
 SOUTHEAST CORNER SECTION 17,
 TOWNSHIP 35 NORTH,
 RANGE 07 EAST OF THE 4TH PM,
 TOWN OF KING,
 COUNTY OF LINCOLN

WISCRS - LINCOLN COUNTY
 N: 242,875.940 USft (242,875.964)
 E: 407,290.777 USft (407,290.736)
 Datum: NAD83 (2011)
 GNSS Method RTN - Direct
 GNSS Control WISCORS VRS



The coordinate value shown has been verified by the average of two or more GPS observations at a markedly different time. Coordinates shown in parenthesis are provided by Lincoln County.

A-E 7.08(3)(b)

Original Surveyor: Alfred Millard

Date of Original Survey Commenced: June 24, 1861
 Completed: July 10, 1861

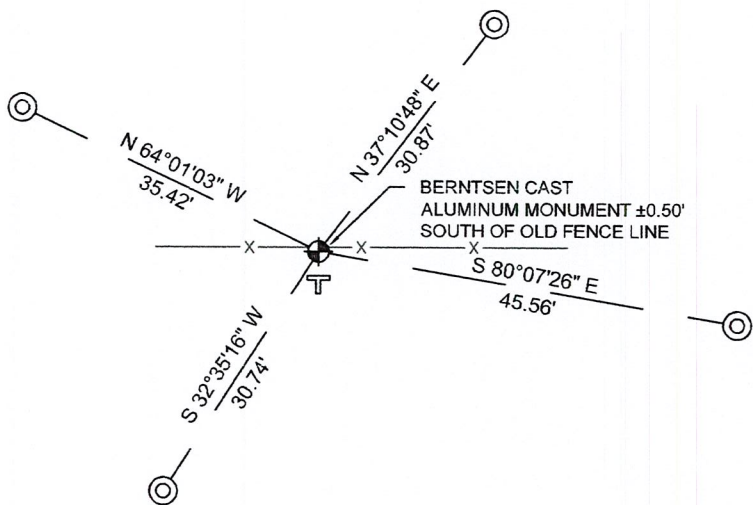
Original Accessories:
 Sp Pine 5 S 25° W 41 links
 Sp Pine 5 N 37° E 60 links

May 3, 1984 - Surveyor 1192 - Lester J. Schmidt - indicates this position as "Berntsen monument set this survey" on Lincoln County map M192B.
 May 23, 1995 - Surveyor 1192 - Lester J. Schmidt - indicates this position as "Berntsen monument found in place" on Lincoln County map M353B & M464B.
 September 11, 1995 - Surveyor 1192 - Lester J. Schmidt - indicates this position as "Berntsen monument set this survey" on Lincoln County map L201B.
 January 10, 2000 - Surveyor 1234 - James D. Rein - indicates this position as "4" dia. cast aluminum monument found in place" on Lincoln County map L287A.
 November 3, 2011 - Surveyor 1234 - James D. Rein - indicates this position as "4" dia. cast aluminum monument previously found in place" on Lincoln County map M612A & M615B.
 July 7, 2020 - Surveyor 2958 - Jesse L. Roberge - indicates this position as "found aluminum monument" on Lincoln County map S730A.
 June 9, 2021 - Surveyor 3201 - John M. Jursa - indicates this position as "found Berntsen monument" on Lincoln County map S775A.

September 19, 2022 - While performing the 2022 Lincoln County PLSS Corner Remonumentation and GPS Services project, I found a Berntsen cast aluminum monument with a 4" diameter cap near the computed position provided by Lincoln County. I established 4 new reference monuments as shown below.

A-E 7.08(3)(c)(d) Plan view of corner with references to at least 4 witness monuments.

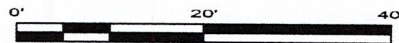
BEARINGS LISTED TO THE NEAREST SECOND ARE REFERENCED TO WISCONSIN COUNTY COORDINATE REFERENCE SYSTEM - LINCOLN COUNTY ZONE. ALL OTHER BEARINGS ARE MAGNETIC



RECEIVED BY LINCOLN COUNTY SURVEYOR THIS 27TH DAY OF December 20 22
 [Signature]
 COUNTY SURVEYOR

LEGEND

- Berntsen cast aluminum monument, found
- 7/8" diameter X 30" long - iron rod with 2" diameter aluminum cap, set
- Vinyl T-post, set ±1 foot south of corner



A-E 7.08(3)(e) 1861 Surveyor set a post, 1984 Surveyor set a Berntsen monument, 1995 - 2021 Surveyors have all found a Berntsen monument. I a Berntsen cast aluminum monument with a 4" diameter cap.

A-E 7.08(3)(f) I accept this monument as a FOUND PERPETUATED LOCATION of the corner.
 A-E 7.08(3)(g)(h) This corner was not determined through lost-corner-proportionate methods.

A-E 7.08(3)(i) I, Jeffrey L. DeMuth, Professional Land Surveyor No. S-2656, hereby certify that the corner location on this record was determined by the Lincoln County Surveyor, and the monuments found or set as shown hereon were measured by me or under my direction and control, and that this U.S. Public Land Survey Monument Record is correct and complete to the best of my knowledge, and belief.

SIGNATURE

[Handwritten Signature]

December 14, 2022

DATE



b-11

REPORT

2022-Lincoln County PLSS Corner Remonumentation and GPS Services

Wisconsin Corner Point Identification Number: 43507170000

Surveyor: Jeffrey L. DeMuth – S2656

Corner monument: Found Berntsen cast aluminum monument – 4" diameter cap.

Field Book: Cardinal North – Lincoln Co. Remon. – 2022-00

Page: 47

Horizontal Datum: WisCRS – Lincoln County Zone – NAD83(2011)

Date / time of initial measurement:

September 19, 2022 - Start 17:13:21 CDT – End 17:30:52 CDT

Reference monuments:

4 – Set - 7/8" diameter X 30" long iron rods with 2" diameter Lincoln Co. aluminum cap.

Coordinate Table

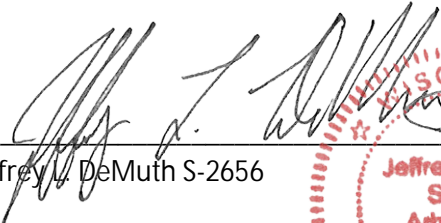
	County Provided	2022 Measurement	Difference
North	242875.964	242875.940	0.02
East	407290.736	407290.777	-0.04

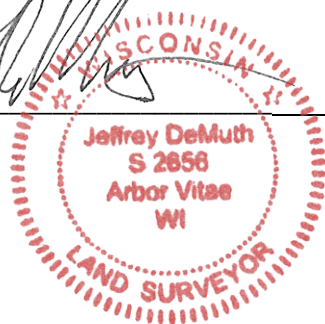
Observed coordinates match with existing coordinates within reason.

Request Data Log for more information.

Additional Notes:

Corner falls ± 0.5 feet south of old-down barb wire fence.


Jeffrey L. DeMuth S-2656



October 7, 2022

Date

43507170000_Mon-N



43507170000_North



4350717000_West



43507170000_South



43507170000_East

