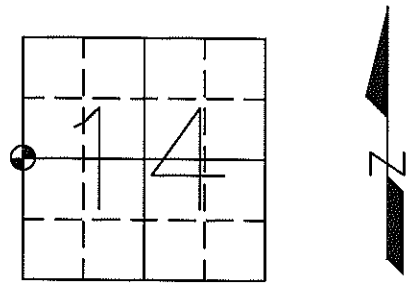


U.S. PUBLIC LAND SURVEY MONUMENT RECORD

Note: This form is intended and designed to fulfill all requirements of Wisconsin Administrative Code, Chapter A-E 7.08, U.S. Public Land Survey Monument Record (3) (a) (b) (c) (d) (e) (f) (g) (h) (i). An additional sheet may be added if necessary to conform with said requirements.

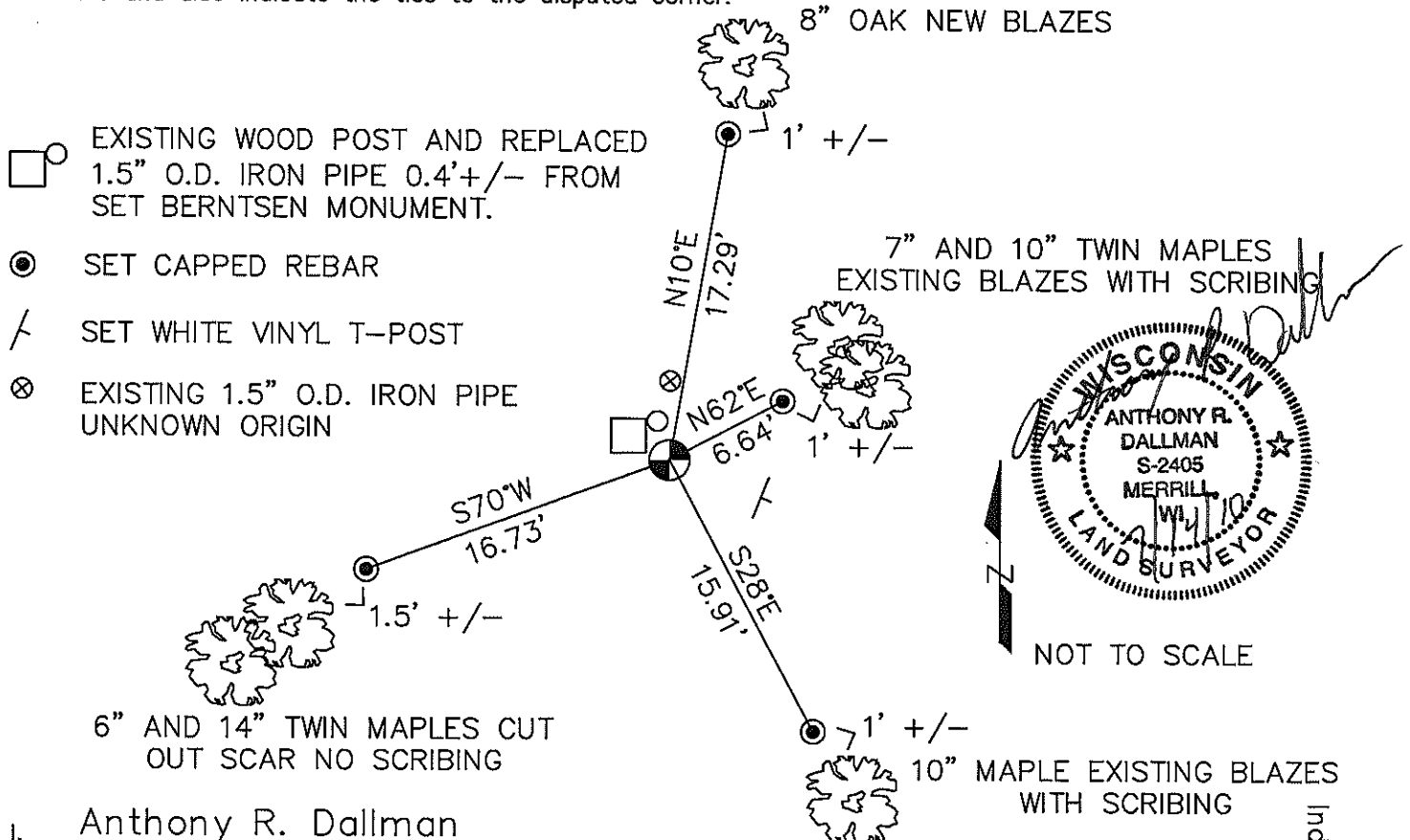
(a) Corner location: Township 35 North
 Range 7 East
 Town/~~City~~/Village KING
 County Lincoln



(b) (f) (g) (h) Description of monument found at this corner and if it was accepted, state all evidence (material, testimonial, occupational, plats, records, other monuments) used as a basis for accepting. If not accepted or if nothing was found, state evidence used as basis for establishing location. If reestablished through lost corner proportionate methods, indicate all monuments, distances and directions used to establish.

- 1861 - Millard, Alfred set 1/4 section post, witnessed by: W. Birch 16 S34°W 51 Links
 Maple 12 N60°E 24 Links
- 1968 - John Fisher, of Northwoods Surveyors Inc., set an Iron Pipe for corner.
- 2010 - I found two 1 3/4" Iron Pipes at corner location approximately 2' North-South of each other. Tied into Musky Manor plat to find the correct monument for the corner. The evidence pointed directly to neither, but averaged nearer to the South Iron Pipe and the South I.P. also matched the type of pipes that were set along the North line of Musky Manor so I accepted the South I.P. as the best available evidence.

(c) (d) (e) Plan view of corner with ties to at least 4 witness monuments. If in disagreement with previously established corner, show the distance between the two corners and also indicate the ties to the disputed corner.

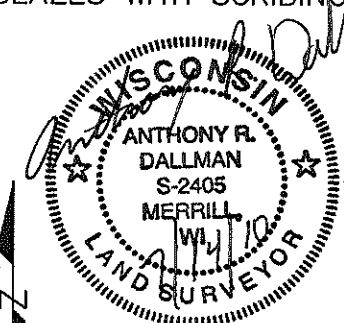


(i) I, Anthony R. Dallman

(type or print name) certify that the corner location on this record was determined by me or under my direction and control and that this U.S. Public Land Survey Monument Record is correct and complete to the best of my knowledge and belief.

Anthony R. Dallman
 Signature

7/14/10
 Date



NOT TO SCALE

Index No. K-112





