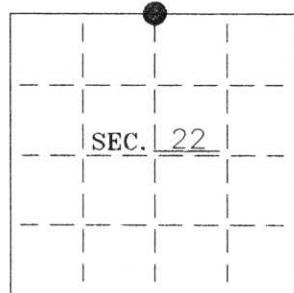


U. S. PUBLIC LAND SURVEY MONUMENT RECORD

Note: This form is intended and designed to fulfill all requirements of Wisconsin Administrative Code-Chapter A-E 7.08 U. S. Public Land Survey Monument Record (3)(a)(b)(c)(d)(e)(f)(g)(h)(i). An additional sheet may be added if necessary to conform with said requirements.

(a) CORNER LOCATION: State Plane Coordinates
N 1/4 corner of Sec. 22 X ---
 Township 35 North Y ---
 Range 7 East Datum Base ---
 Town King County of Lincoln



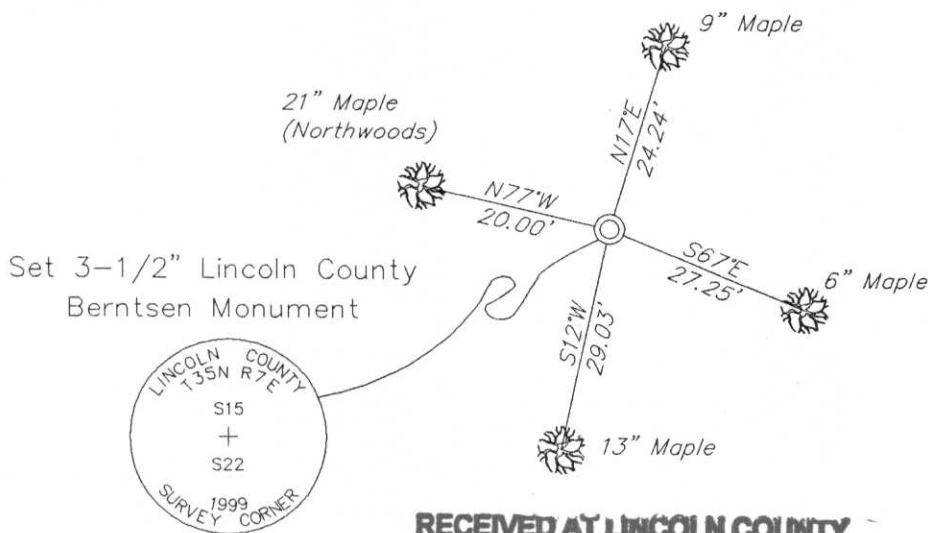
(b) HISTORY OF ORIGINAL CORNER ESTABLISHMENT:
 Original Surveyor: Alfred Millard
 Date of Survey: Commenced 1861
 Completed 1861

Original B.T.'S
 8" Aspen S56°W 11 lks
 10" Aspen N80°E, 8 lks

(b)(f)(g)(h) Description of monument found at this corner and if it was accepted—state all evidence (material—testimonial—occupation—plats—records—other monuments) used as a basis for accepting. If not accepted or if nothing was found state evidence used as basis for establishing location. If reestablished through lost corner proportionate methods indicate all monuments—distances and directions used to establish. Indicate type of monument and sign post found or set.

- 1968— Northwoods Surveyors' notes indicate they found and accepted a 1" iron pipe with a scribed cedar post and a North-South fence line 1' East of corner while doing a section subdivision of Section 15. They made 2 new BT's: 14" Maple N78°W 19.8' and 5" Maple S67°E, 11.9'.
- 1987— W.H. Stuth (O-I) found and accepted a iron pipe "by others" while doing a section subdivision of Section 15 as shown on a map dated 2/26/87.
- 1999— I found and accepted a 1" iron pipe with a cedar post adjacent, Northwoods' NW BT, and the remnants of a barbed wire fence east of the corner. I replaced the 1" iron pipe with a Berntsen Monument and made 3 new BT's. See sketch below.

(c)(d)(e) Plan view of corner with ties to at least 4 witness monuments. If in disagreement with previously established corner—show the distances between the two corners and also indicate the ties to the disputed.



—Set white carsonite post
 ±1' North of 1/4 corner.
 —set PK nails
 in each BT

**RECEIVED AT LINCOLN COUNTY
 COURTHOUSE THIS 16TH DAY
 OF April 20 01
Tony Dellman
 LAND INFORMATION OFFICE**



(i) I Charles E. Winkler S-1431
 hereby certify that the corner location on this record was determined by me or under my direction and control and that this U.S. Public Land Survey Monument Record is correct and complete to the best of my knowledge and belief.

Charles E. Winkler 4/12/2001
 Signature Foltz and Associates, Inc. Date

INDEX NO. M-15



8 2:32 PM



8 2:34 PM



8 2:35 PM