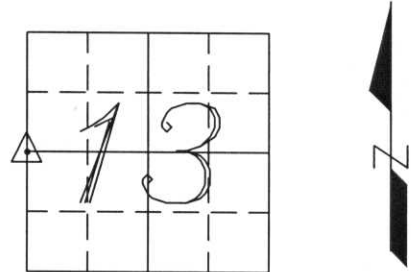


# U.S. PUBLIC LAND SURVEY MONUMENT RECORD

Note: This form is intended and designed to fulfill all requirements of Wisconsin Administrative Code, Chapter A-E 7.08, U.S. Public Land Survey Monument Record (3) (a) (b) (c) (d) (e) (f) (g) (h) (i). An additional sheet may be added if necessary to conform with said requirements.

(a) Corner location: Township 35 North  
 Range 7 East  
 Town/~~City~~/Village King  
 County Lincoln



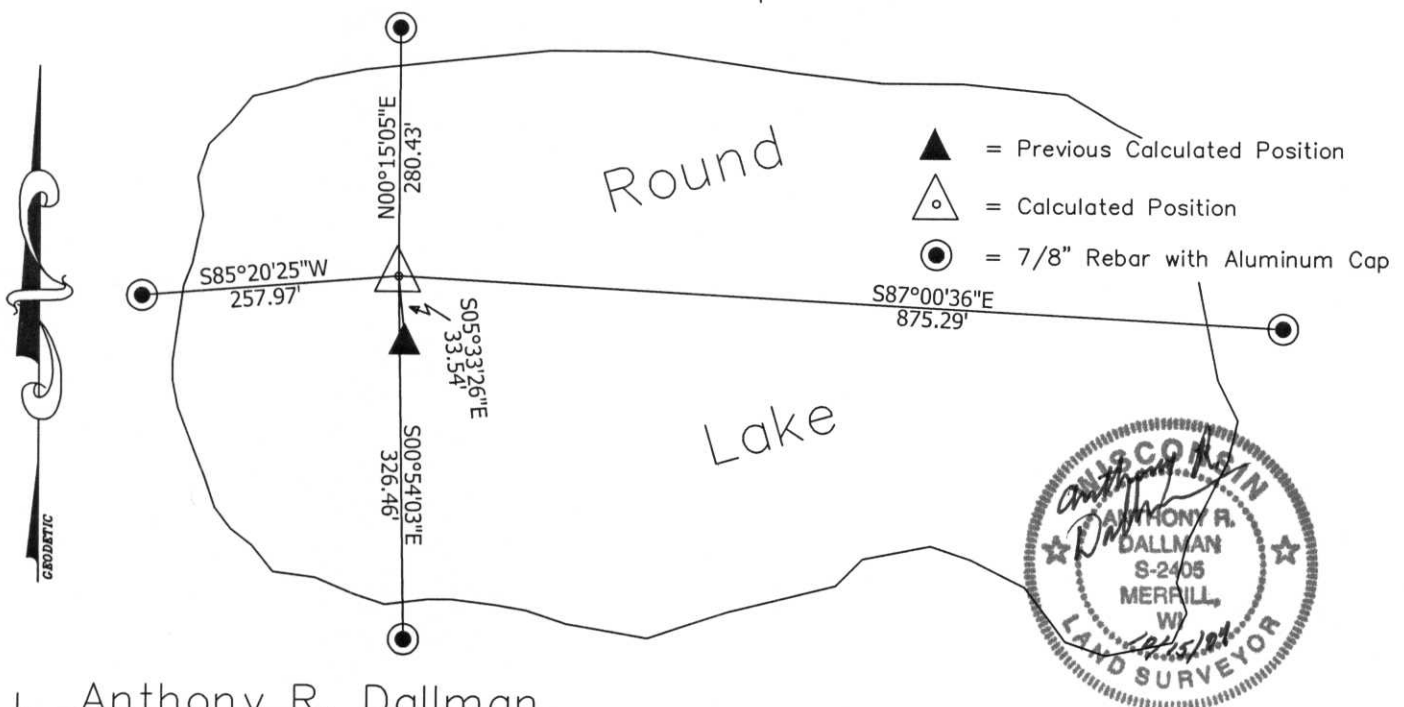
(b) (f) (g) (h) Description of monument found at this corner and if it was accepted, state all evidence (material, testimonial, occupational, plats, records, other monuments) used as a basis for accepting. If not accepted or if nothing was found, state evidence used as basis for establishing location. If reestablished through lost corner proportionate methods, indicate all monuments, distances and directions used to establish.

1861 - Alfred Millard set a post on South side of small lake at 34.90 chains:  
 witnessed by Aspen 10 S20E 16 links  
 W. Birch 7 S66W 22 links  
 and a post on the North side of small lake at 44.47 chains:  
 witnessed by W. Pine 6 N34E 12 links  
 W. Pine 6 N24W 15 links.  
 Corner falls in lake.

2001 - I established position for corner by taking the average of the Mean Bearings of the North and South Section Lines of Sections 13 & 14. Distances fit very well with Original Calls for Lake.

2004 - After re-establishing the SW Corner of Section 13, I came up with a new Mean Bearing location. The Mean Bearings from Section 13 & Section 14 fit within 14.48' of each other when they crossed a straight line between the NW & SW Corners of Section 13. I split the difference between said Mean Bearings along said Line. The location fit the Original Calls to the Lake. Corner location is referenced as shown below.

(c) (d) (e) Plan view of corner with ties to at least 4 witness monuments. If in disagreement with previously established corner, show the distance between the two corners and also indicate the ties to the disputed corner.



(i) I, Anthony R. Dallman  
 (type or print name) certify that the corner location on this record was determined by me or under my direction and control and that this U.S. Public Land Survey Monument Record is correct and complete to the best of my knowledge and belief.

Anthony R. Dallman  
 Signature

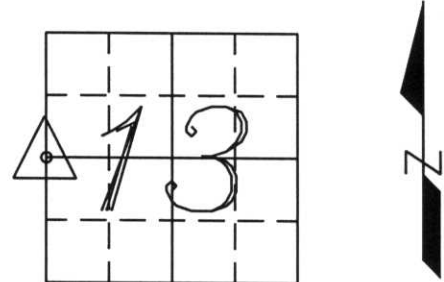
10/15/04  
 Date

Index No. K-21

# U.S. PUBLIC LAND SURVEY MONUMENT RECORD

Note: This form is intended and designed to fulfill all requirements of Wisconsin Administrative Code, Chapter A-E 7.08, U.S. Public Land Survey Monument Record (3) (a) (b) (c) (d) (e) (f) (g) (h) (i). An additional sheet may be added if necessary to conform with said requirements.

(a) Corner location: Township 35 North  
 Range 7 East  
 Town/~~City~~/Village King  
 County Lincoln

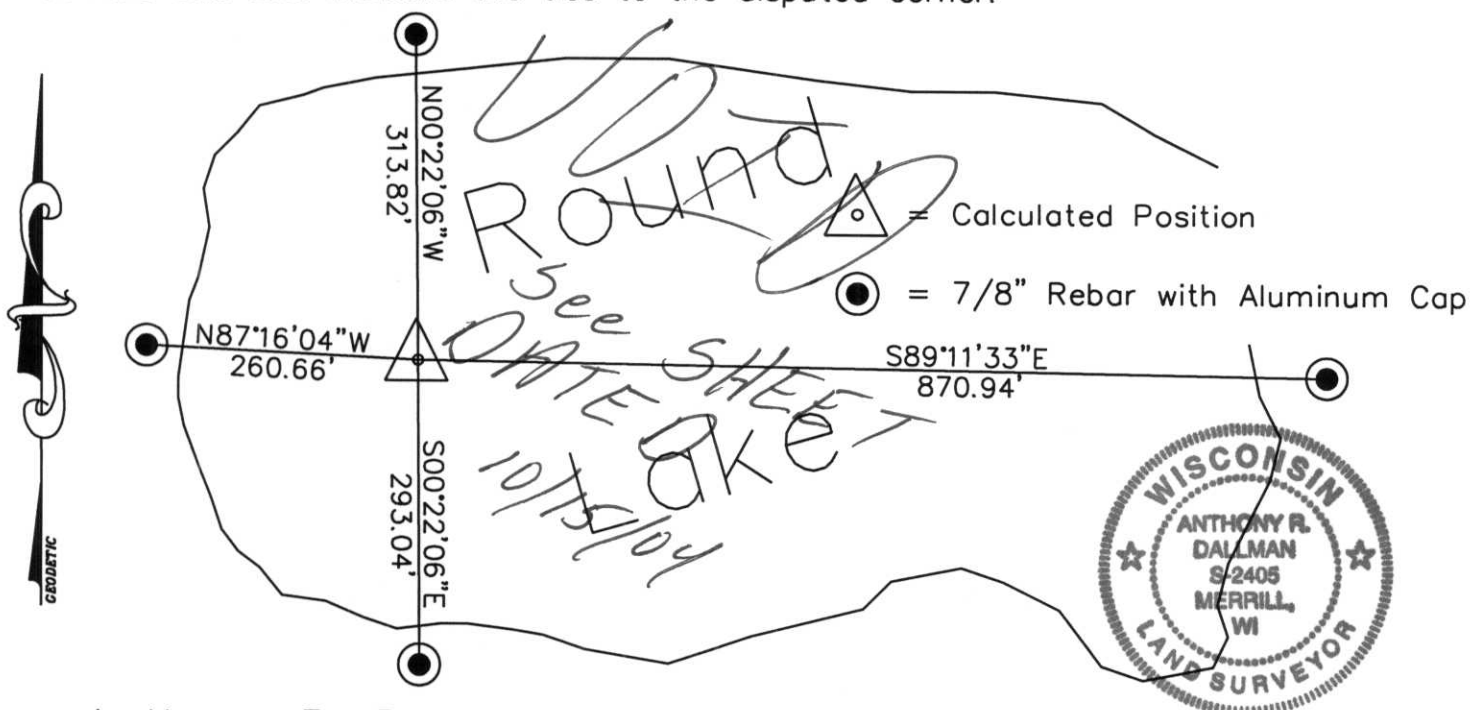


(b) (f) (g) (h) Description of monument found at this corner and if it was accepted, state all evidence (material, testimonial, occupational, plats, records, other monuments) used as a basis for accepting. If not accepted or if nothing was found, state evidence used as basis for establishing location. If reestablished through lost corner proportionate methods, indicate all monuments, distances and directions used to establish.

1861 - Alfred Millard set a post on South side of small lake at 34.90 chains:  
 witnessed by Aspen 10 S20E 16 links  
 W. Birch 7 S66W 22 links  
 and a post on the North side of small lake at 44.47 chains:  
 witnessed by W. Pine 6 N34E 12 links  
 W. Pine 6 N24W 15 links.  
 Corner falls in lake.

October 2001 - I established position for corner by taking the average of the Mean Bearings of the North and South Section Lines of Sections 13 & 14. Distances fit very well with original calls for lake. Referenced Corner as shown below.

(c) (d) (e) Plan view of corner with ties to at least 4 witness monuments. If in disagreement with previously established corner, show the distance between the two corners and also indicate the ties to the disputed corner.



(i) I, Anthony R. Dallman  
 (type or print name) certify that the corner location on this record was determined by me or under my direction and control and that this U.S. Public Land Survey Monument Record is correct and complete to the best of my knowledge and belief.

Anthony R. Dallman  
 Signature Date 11/07/01