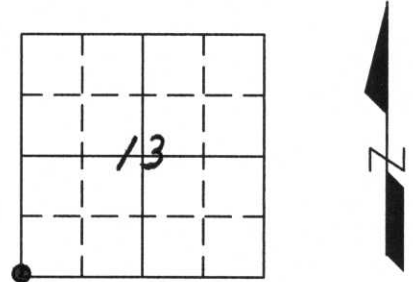


U.S. PUBLIC LAND SURVEY MONUMENT RECORD

Note: This form is intended and designed to fulfill all requirements of Wisconsin Administrative Code, Chapter A-E 7.08, U.S. Public Land Survey Monument Record (3) (a) (b) (c) (d) (e) (f) (g) (h) (i). An additional sheet may be added if necessary to conform with said requirements.

(a) Corner location: Township 35 North
 Range 7 East
 Town/City/Village King
 County Lincoln



(b) (f) (g) (h) Description of monument found at this corner and if it was accepted, state all evidence (material, testimonial, occupational, plats, records, other monuments) used as a basis for accepting. If not accepted or if nothing was found, state evidence used as basis for establishing location. If reestablished through lost corner proportionate methods, indicate all monuments, distances and directions used to establish.

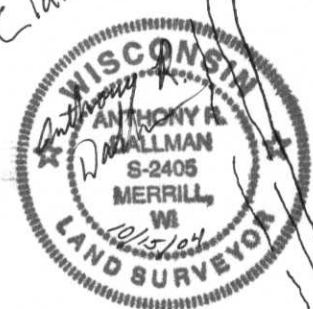
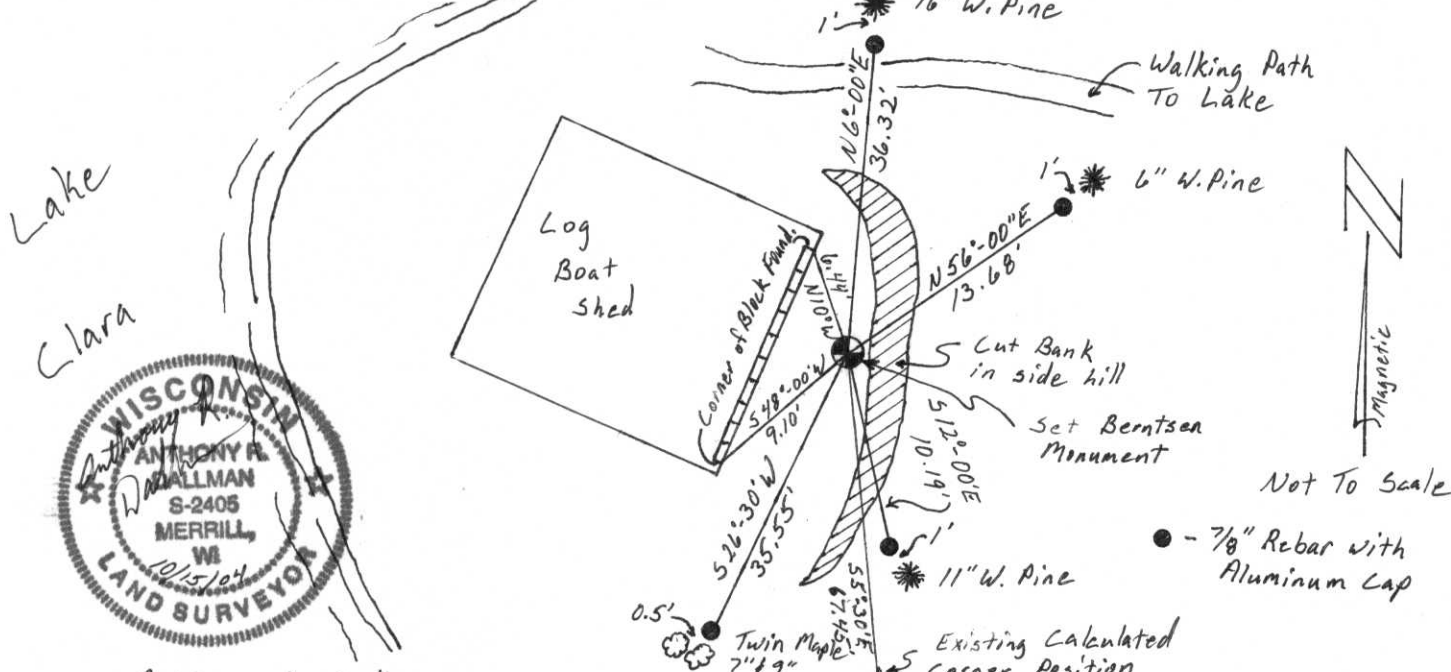
1861 - Alfred Millard set wood post witnessed by: Y. Pine 10" N45°E; 121ks
 Y. Pine 12" S11°E; 551ks

Unknown Date - A.W. Kordick found corner to be "obliterated by bulldozer work".

1977 - Chester Nowaczyk used a calculated section corner position to establish the 1/4 corner to the East.

2004 - Stuart Foltz and I re-established corner location by recreating the original shoreline, to the best of our ability, and used the original calls to said shoreline. North, 1.50 chains to Lake; West, 0.50 chains to Lake; South, 2.35 chains to Lake. The new position falls N5°-30'W, 67.45' from the calculated position used by Chester Nowaczyk, to establish the 5/4 corner of Section 13.

(c) (d) (e) Plan view of corner with ties to at least 4 witness monuments. If in disagreement with previously established corner, show the distance between the two corners and also indicate the ties to the disputed corner.



(i) I, Anthony R. Dallman
 (type or print name) certify that the corner location on this record was determined by me or under my direction and control and that this U.S. Public Land Survey Monument Record is correct and complete to the best of my knowledge and belief.

Anthony R. Dallman Signature 10/15/04 Date

Index No. M-21