

CERTIFIED LAND CORNER RESTORATION

Index No. I-23

State of Wisconsin }  
County of LINCOLN } ss.

History of original corner establishment:

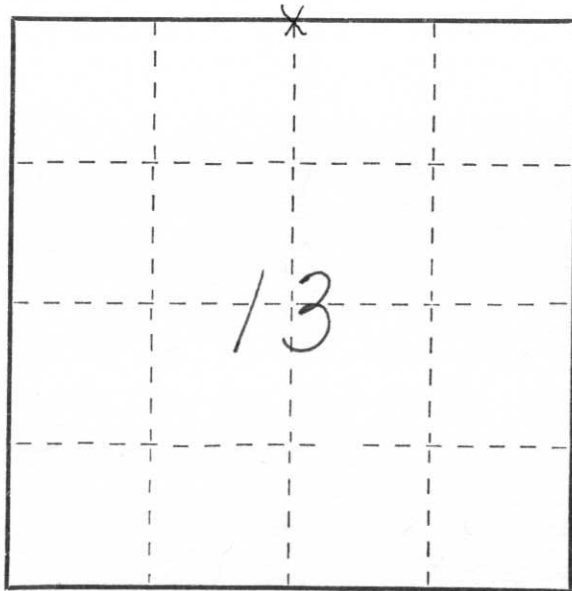
I CHESTER J. NOWACZYK, do hereby certify that on the 9<sup>th</sup> day of OCT, 1977, I found evidence of the N/4 corner of SEC 13 Township 35, North, Range 7 EAST, Fourth, Principal Meridian, as described hereon; and that from this evidence I established a new monument and accessories as described hereon to perpetuate the original location of this corner.

Description of corner evidence found:

FOUND EXISTING 1/2" IRON WITH 24" BEARING TREE

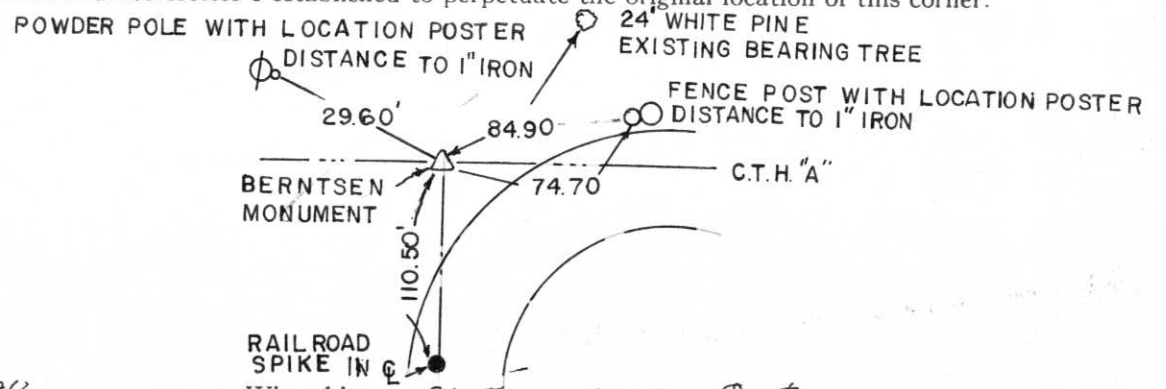
Resident witnesses:

.....  
.....  
.....



○ = Corner monument restored.

Description of monument and accessories I established to perpetuate the original location of this corner.



Dated at WAUSAU, Wis., this 21<sup>st</sup> day of Oct., 1977.

Signature Chester J. Nowaczyk Title REGISTERED LAND SURVEYOR Registration No. 51143  
(County Surveyor, Registered Land Surveyor, or other duly authorized official)

Office of Register of Deeds, County of....., I hereby certify that the within instrument was filed in this office for record on the..... day of....., 19..... at..... o'clock..... M.

.....  
(Register of Deeds)

By..... Deputy



2 3:35 PM



2 3:35 PM



2 3:36 PM

2 3:35 PM





2 3:36 PM