

U.S. PUBLIC LAND SURVEY MONUMENT RECORD

NOTE: This form is intended and designed to fulfill all requirements of Wisconsin Administrative Code, Chapter A-E 7.08 U.S. Public Land Survey Monument Record. An additional sheet may be added if necessary to conform with said requirements.

CORNER LOCATION

Section Corner common to Sections 12, 13, 7 and 18
Township 35 North, Range 7 and 8 East, of the 4th P.M.
Town of King, Lincoln County, Wisconsin

6	5	4	3	2	1
7	8	9	10	11	12
18	17	16	15	14	13
19	20	21	22	23	24
30	29	28	27	26	25
31	32	33	34	35	36

T35N - R7E

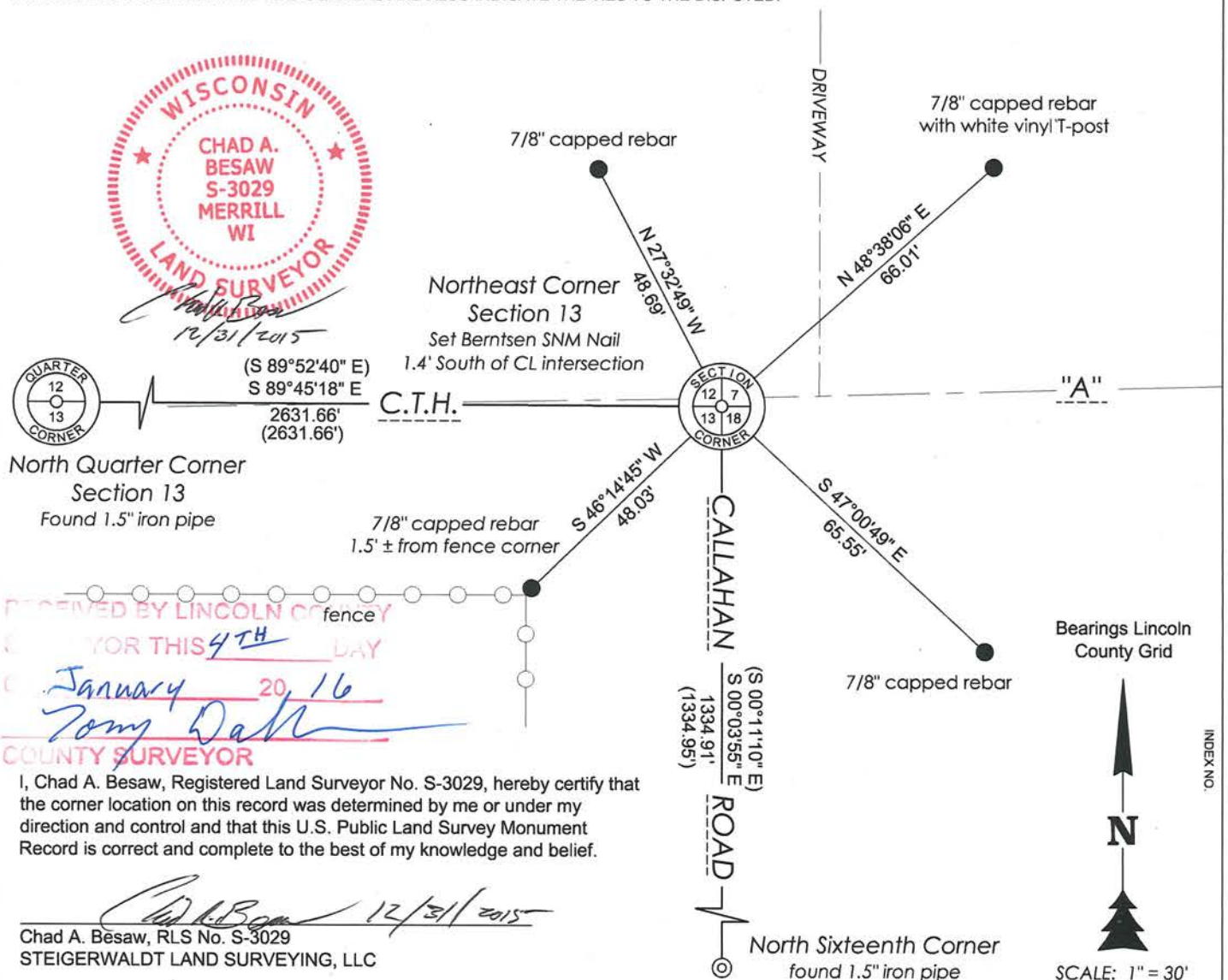
HISTORY OF ORIGINAL CORNER ESTABLISHMENT

ORIGINAL SURVEYOR: Millard, Alfred
DATE OF SURVEY: August 1860 - September 1860
ORIGINAL ACCESSORIES: "Set post at corner to sections 12, 13, 7 & 18"
W. Pine 14 S23°W 15 links
Aspen 10 S37°E 40 links
W. Pine 10 N24°E 11 links
W. Pine 12 N61°W 10 links

DESCRIPTION OF MONUMENT FOUND AT THIS CORNER AND IF IT WAS ACCEPTED, STATE ALL EVIDENCE (MATERIAL, TESTIMONIAL, OCCUPATIONAL, PLATS, RECORDS, OTHER MONUMENTS) USED AS A BASIS FOR ACCEPTING. IF NOT ACCEPTED OR IF NOTHING WAS FOUND, STATE EVIDENCE USED AS BASIS FOR ESTABLISHING LOCATION. IF RE-ESTABLISHED THROUGH LOST CORNER PROPORTIONATE METHODS, INDICATE ALL MONUMENTS, DISTANCES AND DIRECTIONS USED TO ESTABLISH. INDICATE TYPE OF MONUMENT AND SIGN POST FOUND OR SET.

- Oct. 1977 - Chester Nowaczyk found an existing square iron bar and referenced to power poles.
- July 1983 - Lester Schmit surveyed part of the Northeast Quarter of Section 13 and found an existing square iron bar at corner location.
- Jun. 2001 - Lester Schmit surveyed part of the Northeast Quarter of Section 13 and found an existing square iron bar at corner location.
- Aug. 2005 - Lester Schmit surveyed part of the Northeast Quarter of Section 13 and found an existing square iron bar at corner location.
- Dec. 2015 - Chad A. Besaw found no evidence of 1977 ties. I reestablished the corner per existing county data and set a Berntsen Steel Nail Marker 1.4' South of center line intersection of C.T.H. "A" and Callahan Road. Corner location agrees with Schmit's survey records in the area and a strong mag pull was present under surface of C.T.H. "A" at the corner location. Witnessed as shown below:

PLAN VIEW OF CORNER WITH TIES TO AT LEAST 4 WITNESS MONUMENTS. IF IN DISAGREEMENT WITH PREVIOUSLY ESTABLISHED CORNER, SHOW THE DISTANCES BETWEEN THE TWO CORNERS AND ALSO INDICATE THE TIES TO THE DISPUTED.



CERTIFIED LAND CORNER RESTORATION

Index No. I-25

State of Wisconsin }
County of LINCOLN } ss.

History of original corner establishment:

I CHESTER J. NOWACZYK, do hereby certify that on the 9th day of Oct, 19 77, I found evidence of the NE corner of SEC 13 Township 35, North, Range 7 EAST, Fourth, Principal Meridian, as described hereon; and that from this evidence I established a new monument and accessories as described hereon to perpetuate the original location of this corner.

Description of corner evidence found:

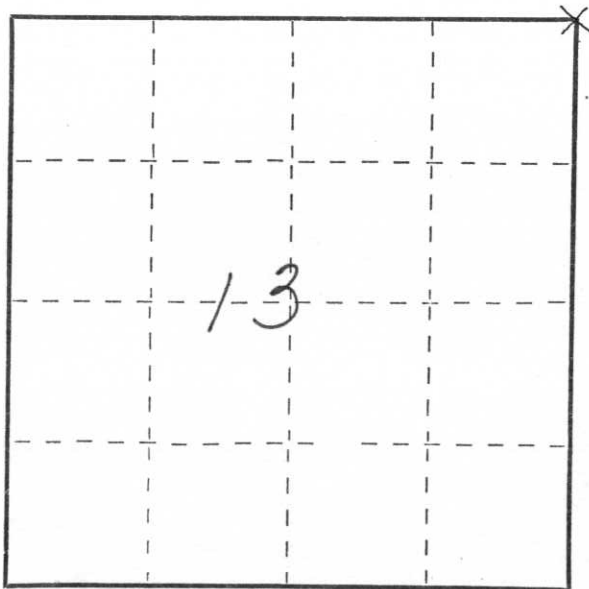
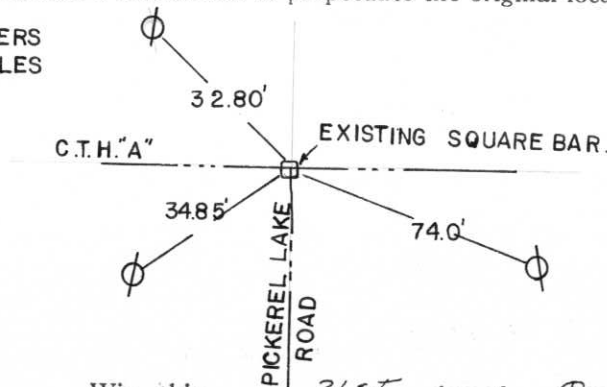
FOUND SQUARE BAR IN CENTER LINE OF ROADS.

Resident witnesses:

.....
.....
.....

Description of monument and accessories I established to perpetuate the original location of this corner.

NOTE: METAL LOCATION POSTERS PLACED ON POWDER POLES



Dated at WAUSAU, Wis., this 21ST day of Oct, 19 77.

Signature Chester J. Nowaczyk Title REGISTERED LAND SURVEYOR Registration No. 51143
(County Surveyor, Registered Land Surveyor, or other duly authorized official)

Office of Register of Deeds, County of....., I hereby certify that the within instrument was filed in this office for record on the..... day of....., 19..... at..... o'clock..... M.

.....
(Register of Deeds)

By..... Deputy

○ = Corner monument restored.



3 2:45 PM



3 2:46 PM



3 2:47 PM