

U.S. PUBLIC LAND SURVEY MONUMENT RECORD

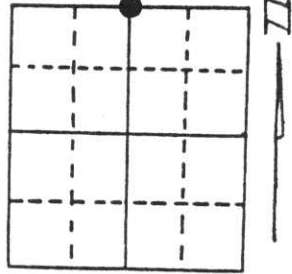
Note: This form is intended and designed to fulfill all requirements of Wisconsin Administrative Code, Chapter A-E 5.02, U.S. Public Land Survey Monument Record (3) (a) (b) (c) (d) (e) (f) (g) (h) (i). An additional sheet may be added if necessary to conform with said requirements.

(a) Corner location: Township 35 North

Range 7 East

Town/City/Village King

County Lincoln



Section 16

(b) (f) (g) (h) Description of monument found at this corner and if it was accepted, state all evidence (material, testimonial, occupational, plats, records, other monuments) used as a basis for accepting. If not accepted or if nothing was found, state evidence used as basis for establishing location. If reestablished through lost corner proportionate methods, indicate all monuments, distances and directions used to establish. Original Gov't. Survey: July 1861 by Alfred Millard, set wood post for corner with bearings, spruce pine 5 S 37° W 2.01 chains & spruce pine 3 N 74° W .70 chains. I did not find any monument for the corner location, so I established the corner at the intersection of the centre-lines of Spring Creek Road and Fox Ranch Road. I set a Berntsen monument for the corner and witnessed as shown below.

RECEIVED AT LINCOLN COUNTY

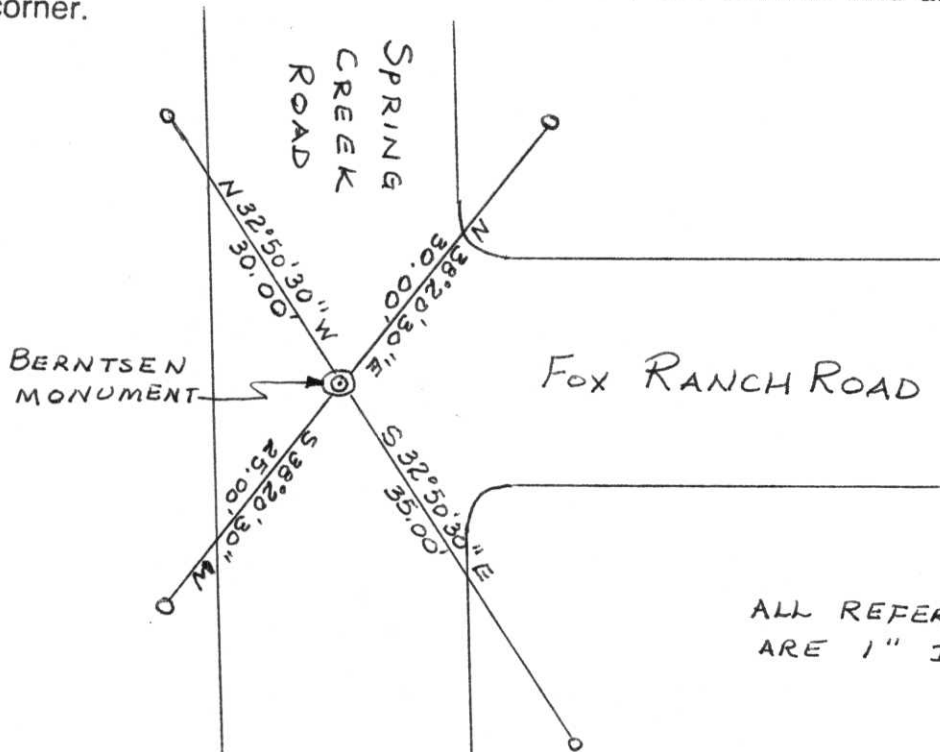
COURTHOUSE THIS 7th DAY

OF June 1994

Pat Priebe

TAX DESCRIPTION OFFICE

(c) (d) (e) Plan view of corner with ties to at least 4 witness monuments. If in disagreement with previously established corner, show the distances between the two corners and also indicate the ties to the disputed corner.



ALL REFERENCE MONUMENTS ARE 1" IRON PIPES

(i) I, Lester J. Schmit

(type or print name) certify that the corner location on this record was determined by me or under my direction and control and that this U.S. Public Land Survey Monument Record is correct and complete to the best of my knowledge and belief.

Lester J. Schmit
Signature

2 Jun 94
Date



Index No. I-11



1 3:20 PM



1 3:22 PM



1 3:24 PM