

# U.S. PUBLIC LAND SURVEY MONUMENT RECORD

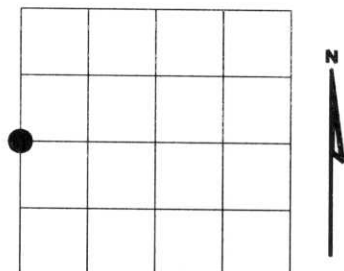
NOTE: This form is intended and designed to fulfill all requirements of Wisconsin Administrative Code, Chapter A-E 7.08 U.S. Public Land Survey Monument Record (3)(a)(b)(c)(d)(e)(f)(g)(h)(i). An additional sheet may be added if necessary to conform with said requirements.

(a) Corner location: Township 35 North

Range 07 East

Town of KING

LINCOLN County, Wisconsin



Section 5

(b)(f)(g)(h) Description of monument found at this corner and if it was accepted, state all evidence (material, testimonial, occupational, plats, records, other monuments) used as a basis for accepting. If not accepted or if nothing was found, state evidence used as basis for establishing location. If reestablished through lost corner proportionate methods, indicate all monuments, distances and directions used to establish. Indicate type of monument found or set and sign post.

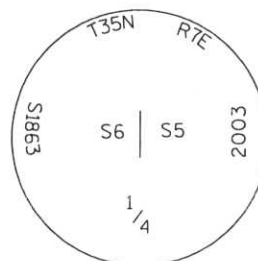
1861 - Original corner set by Alfred Millard

1960 - Bill Stuth - Owen - Illinois found iron pipe by others set 2 BTs  
 8" Cedar S46°W 12.0'  
 12" Cedar N27°E 14.0'

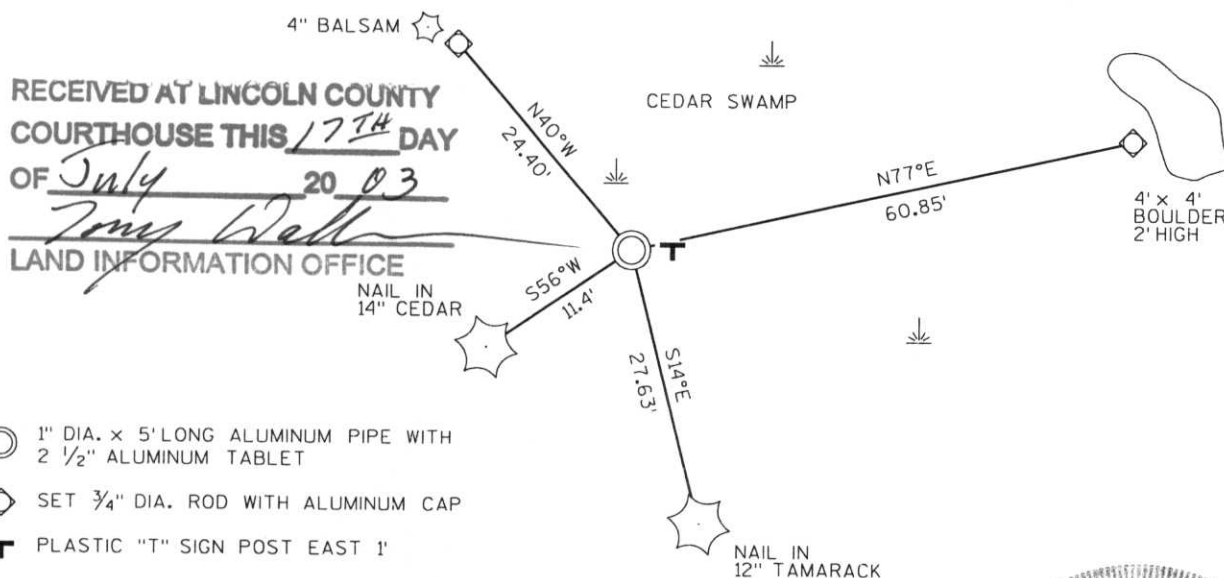
2003 - I found 1" dia. iron pipe and square post  
 Stuths BT: 12" Cedar S56°W 12.0'

Replaced with Lincoln Co. Monument 1" dia. 5' long aluminum pipe with 2 1/2" aluminum tablet stamped to identify corner.

Witnessed as shown below.



(c)(d)(e) Plan view of corner with ties to at least 4 witness monuments. If in disagreement with previously established corner, show the distances between the two corners and also indicate the ties to the disputed corner.



RECEIVED AT LINCOLN COUNTY  
 COURTHOUSE THIS 17<sup>TH</sup> DAY  
 OF July 20 03  
*Tommy Wall*  
 LAND INFORMATION OFFICE

- ⊙ 1" DIA. x 5' LONG ALUMINUM PIPE WITH 2 1/2" ALUMINUM TABLET
- ◇ SET 3/4" DIA. ROD WITH ALUMINUM CAP
- T PLASTIC "T" SIGN POST EAST 1'

(i) I, Dennis Roberts, Registered Land Surveyor #S-1863, hereby certify that the corner location on this record was determined by me or under my direction and control and that this U.S. Public Land Survey Monument Record is correct and complete to the best of my knowledge and belief.



Index No. \*\*\*\*\*

C-5-

*Dennis B. Roberts*  
 Signature

6-20-03  
 Date

