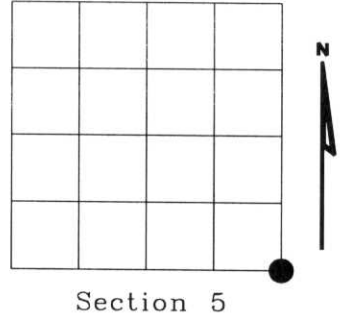


U.S. PUBLIC LAND SURVEY MONUMENT RECORD

NOTE: This form is intended and designed to fulfill all requirements of Wisconsin Administrative Code, Chapter A-E 7.08 U.S. Public Land Survey Monument Record (3)(a)(b)(c)(d)(e)(f)(g)(h)(i). An additional sheet may be added if necessary to conform with said requirements.

(a) Corner location: Township 35 North
 Range 07 East
 Town of KING
 LINCOLN County, Wisconsin



(b)(f)(g)(h) Description of monument found at this corner and if it was accepted, state all evidence (material, testimonial, occupational, plats, records, other monuments) used as a basis for accepting. If not accepted or if nothing was found, state evidence used as basis for establishing location. If reestablished through lost corner proportionate methods, indicate all monuments, distances and directions used to establish. Indicate type of monument found or set and sign post.

1861 - Original corner set by Alfred Millard

1960 - Bill Stuth, Owens - Illinois calls for iron pipe
 Bts: 13" J. Pine S31°E 11.0'
 12" J. Pine S75°W 17.0'

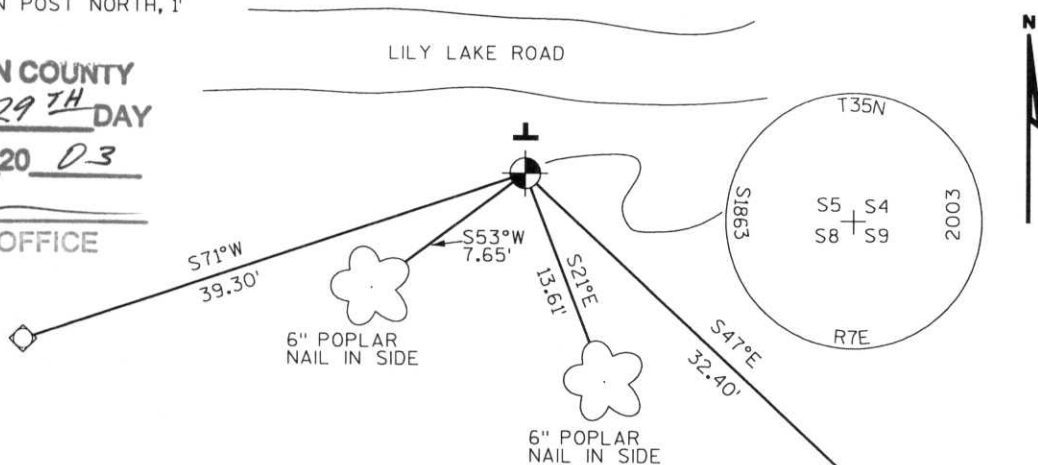
2003 - I found 2" dia. iron pipe bent, and up 2' and old BT 13" J. Pine stump S31°E, 11.0' Replaced pipewith Lincoln County Bernsten monument.

Witnessed as shown below.

(c)(d)(e) Plan view of corner with ties to at least 4 witness monuments. If in disagreement with previously established corner, show the distances between the two corners and also indicate the ties to the disputed corner.

- SET LINCOLN COUNTY BERNSTEN MONUMENT
- SET 3/4" ROD WITH ALUMINUM CAP
- SET PLASTIC "T" SIGN POST NORTH, 1'

RECEIVED AT LINCOLN COUNTY
 COURTHOUSE THIS 29TH DAY
 OF September 20 03
Tommy Dalt
 LAND INFORMATION OFFICE



(i) I, Dennis Roberts, Registered Land Surveyor #S-1863, hereby certify that the corner location on this record was determined by me or under my direction and control and that this U.S. Public Land Survey Monument Record is correct and complete to the best of my knowledge and belief.

Dennis B. Roberts
 Signature

9/25/03
 Date



Index No. E-9

