

U.S. PUBLIC LAND SURVEY MONUMENT RECORD

NOTE: This form is intended and designed to fulfill all requirements of Wisconsin Administrative Code, Chapter A-E 7.08 U.S. Public Land Survey Monument Record. An additional sheet may be added if necessary to conform with said requirements.

CORNER LOCATION

Meander Corner common to Sections 34 and 35
Township 35 North, Range 6 East of the 4th P.M.
City of Tomahawk, Lincoln County, Wisconsin

COORDINATE INFORMATION

Coordinates shown hereon are based on
GPS observations in Lincoln County Grid in
NAD-83(2011)

6	5	4	3	2	1
7	8	9	10	11	12
18	17	16	15	14	13
19	20	21	22	23	24
30	29	28	27	26	25
31	32	33	34	35	36

T35N - R6E

N: 230,578.77
E: 386,071.56

HISTORY OF ORIGINAL CORNER ESTABLISHMENT

ORIGINAL SURVEYOR: Alfred Millard
DATE OF SURVEY: Commenced October 1860, Finished July 1861
ORIGINAL ACCESSORIES: At 52.94 ch, set meander post
12" Yellow Pine, S47°W, 24 lks
10" White Pine, S60°E, 30 lks

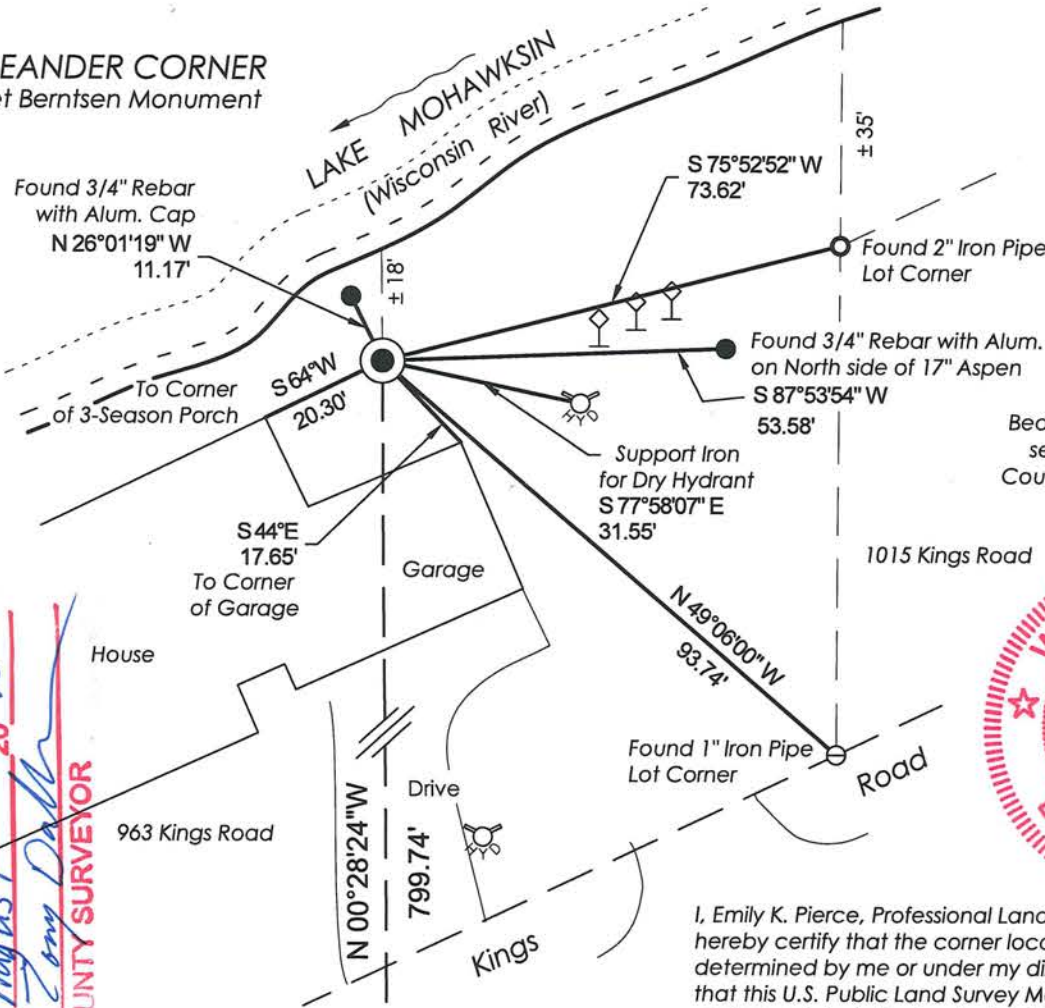
DESCRIPTION OF MONUMENT FOUND AT THIS CORNER AND IF IT WAS ACCEPTED, STATE ALL EVIDENCE (MATERIAL, TESTIMONIAL, OCCUPATIONAL, PLATS, RECORDS, OTHER MONUMENTS) USED AS A BASIS FOR ACCEPTING. IF NOT ACCEPTED OR IF NOTHING WAS FOUND, STATE EVIDENCE USED AS BASIS FOR ESTABLISHING LOCATION. IF RE-ESTABLISHED THROUGH LOST CORNER PROPORTIONATE METHODS, INDICATE ALL MONUMENTS, DISTANCES AND DIRECTIONS USED TO ESTABLISH. INDICATE TYPE OF MONUMENT AND SIGN POST FOUND OR SET.

12/21/2001 Tom Radenz stated they found good evidence along the North line of the Northeast quarter of Section 34 from a plat of survey in Gov't Lot 4. They held found monumentation to re-create the position of the Northeast Corner of Section 34 which falls in the Wisconsin River. The calculated position fit the measurements to the existing East Quarter Corner of Section 34 very good. They then set a Meander Corner between the calculated Northeast Corner of Section 34 and the existing East Quarter Corner of Section 34. Set a Lincoln County Aluminum Monument and 5 ties as shown on previous tiesheet.

8/27/2015 I visited corner location and found the top portion of an aluminum monument broke off and laying on it's side on the backside of a new garage construction. I located two remaining ties and existing monuments in the area and shown on CSM #2309. I computed a location for the meander corner that was set in 2001 which falls within the new garage. Measured from existing Berntsen Monument at the West Quarter Corner of Section 35 through the computed position for the West line of Gov't Lot 2 of Section 35 and set a new Meander Corner along said line. Corner falls approximately 18 feet from the water's edge. Set a Berntsen Aluminum Monument with a Lincoln County stamped top and tied out as shown below.

PLAN VIEW OF CORNER WITH TIES TO AT LEAST 4 WITNESS MONUMENTS. IF IN DISAGREEMENT WITH PREVIOUSLY ESTABLISHED CORNER, SHOW THE DISTANCES BETWEEN THE TWO CORNERS AND ALSO INDICATE THE TIES TO THE DISPUTED.

MEANDER CORNER
Set Berntsen Monument



SCALE: 1" = 30'



Bearings measured to nearest second are based Lincoln County Grid, others were taken with a compass



RECEIVED BY LINCOLN COUNTY SURVEYOR THIS 3RD DAY OF August 20 15
Emily K. Pierce
COUNTY SURVEYOR

WEST QUARTER CORNER
Berntsen Monument



I, Emily K. Pierce, Professional Land Surveyor No. S-2728, hereby certify that the corner location on this record was determined by me or under my direction and control and that this U.S. Public Land Survey Monument Record is correct and complete to the best of my knowledge and belief.

Emily K. Pierce

Emily K. Pierce, PLS No. S-2728
STEIGERWALDT LAND SURVEYING, LLC

V.W-17

U.S. PUBLIC LAND SURVEY MONUMENT RECORD

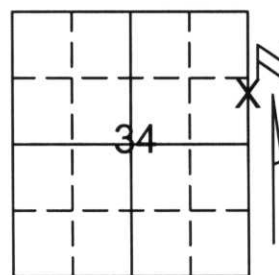
Note: This form is intended and designed to fulfill all requirements of Wisconsin Administrative Code, Chapter A-E 5.02, U.S. Public Land Survey Monument Record (3)(a)(b)(c)(d)(e)(f)(g)(h)(i). An additional sheet may be added if necessary to conform with said requirements.

(a) Corner location: Township 35 North

Range 6 East

Town/City/Village BRADLEY

County LINCOLN



Section 34

(b)(f)(g)(h) Description of monument found at this corner and if it was accepted, state all evidence (material, testimonial, occupational, plats, records, other monuments) used as a basis for accepting. If not accepted or if nothing was found, state evidence used as basis for establishing location. If reestablished through lost corner proportionate methods, indicate all monuments, distances and directions used to establish.

WE FOUND GOOD EVIDENCE ALONG THE NORTH LINE OF THE NORTHEAST 1/4 OF SECTION 34 FROM A PLAT OF SURVEY IN GOVERNMENT LOT 4. WE HELD FOUND MONUMENTATION TO RE-CREATE THE POSITION OF THE NORTHEAST CORNER OF SECTION 34 WHICH FALLS IN THE WISCONSIN RIVER. THE CALCULATED POSITION FIT THE MEASUREMENTS TO THE EXISTING EAST 1/4 CORNER OF SECTION 34 VERY GOOD.

WE THEN SET A MEANDER CORNER BETWEEN THE CALCULATED NORTHEAST CORNER OF SECTION 34 AND THE EXISTING EAST 1/4 CORNER OF SECTION 34.

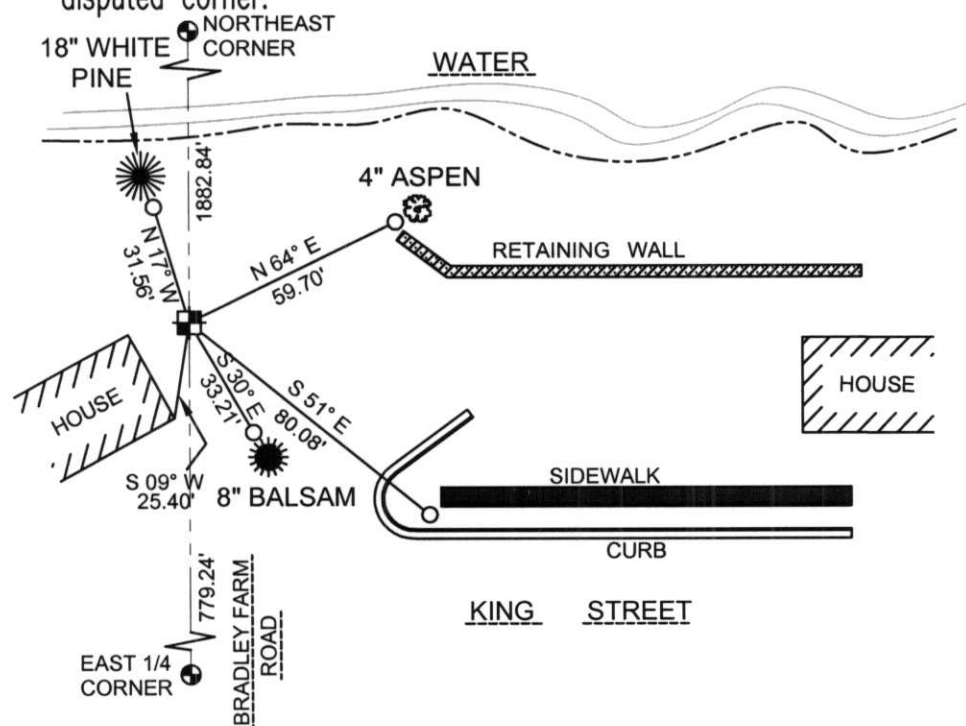
RECEIVED AT LINCOLN COUNTY
COURTHOUSE THIS 21ST DAY

OF December 20 01

Tommy Walker

LAND INFORMATION OFFICE

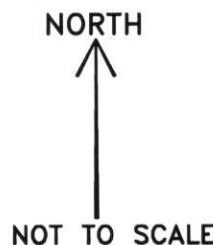
(c)(d)(e) Plan view of corner with ties to at least 4 witness monuments. If in disagreement with previously established corner, show the distances between the two corners and also indicate the ties to the disputed corner.



COORDINATES ARE REFERENCED TO THE LINCOLN COUNTY COORDINATE SYSTEM AS DEVELOPED BY THE WISCONSIN DEPARTMENT OF TRANSPORTATION AND WERE DETERMINED BY GPS OBSERVATIONS ON CONTROL POINTS AS SUPPLIED BY LINCOLN COUNTY. BEARINGS ARE REFERENCED TO MAGNETIC NORTH.

○ - SET 3/4" x 30" REBAR W/ ALUM CAP

⊠ - SOUTH MEANDER CORNER FOR NE 1/4 CORNER SET LINCOLN COUNTY MONUMENT W/ ALUM CAP



(i) I, Thomas A. Radenz, RLS certify that the corner location on this record was determined by me or under my direction and control and that this U.S. Public Land Survey Monument Record is correct and complete to the best of my knowledge and belief.



Index No. 110-17

Thomas A. Radenz
Signature

12/21/01
Date