

U.S. PUBLIC LAND SURVEY MONUMENT RECORD

NOTE: This form is intended and designed to fulfill all requirements of Wisconsin Administrative Code, Chapter A-E 7.08 U.S. Public Land Survey Monument Record. An additional sheet may be added if necessary to conform with said requirements.

CORNER LOCATION

Quarter Corner common to Sections 34 and 35
Township 35 North, Range 6 East of the 4th P.M.
City of Tomahawk, Lincoln County, Wisconsin

6	5	4	3	2	1
7	8	9	10	11	12
18	17	16	15	14	13
19	20	21	22	23	24
30	29	28	27	26	25
31	32	33	34	35	36

T35N - R6E

HISTORY OF ORIGINAL CORNER ESTABLISHMENT

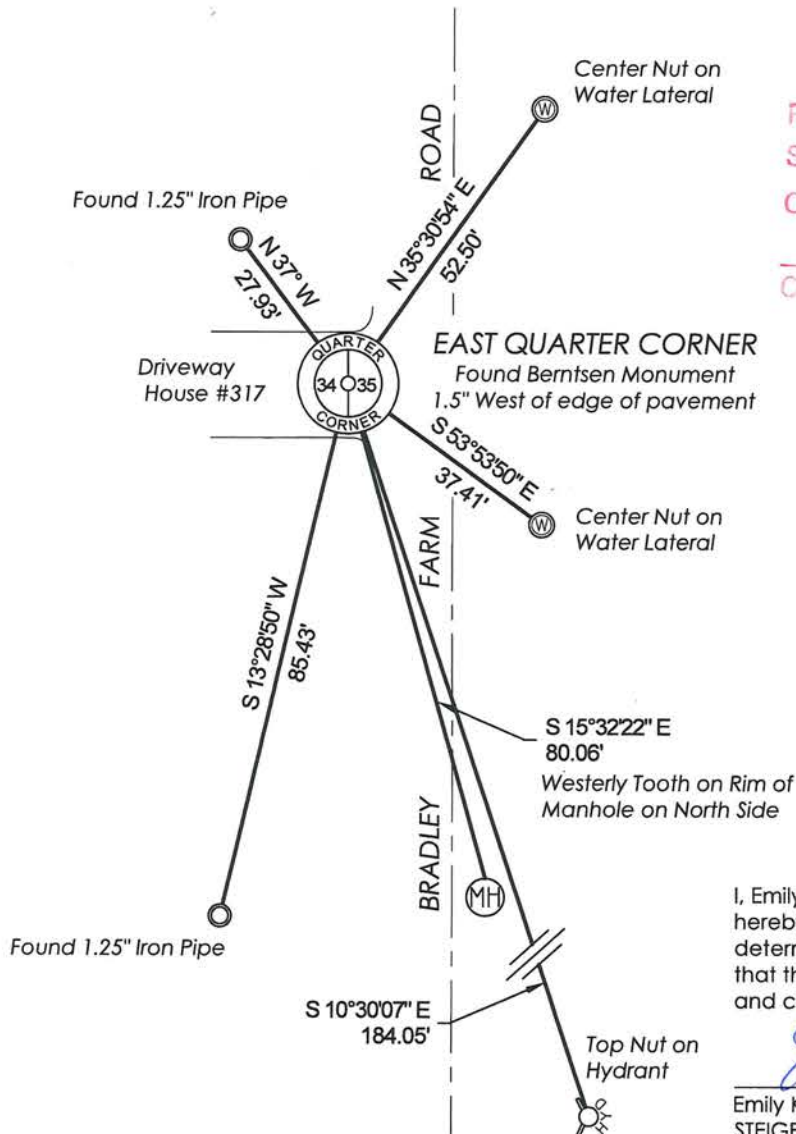
ORIGINAL SURVEYOR: Alfred Millard
DATE OF SURVEY: Commenced October 1860, Finished July 1861
ORIGINAL ACCESSORIES: At 40.00 ch, set corner post
5" Spruce Pine, N26°W, 53 lks
5" Spruce Pine, S15°E, 26 lks

DESCRIPTION OF MONUMENT FOUND AT THIS CORNER AND IF IT WAS ACCEPTED. STATE ALL EVIDENCE (MATERIAL, TESTIMONIAL, OCCUPATIONAL, PLATS, RECORDS, OTHER MONUMENTS) USED AS A BASIS FOR ACCEPTING. IF NOT ACCEPTED OR IF NOTHING WAS FOUND, STATE EVIDENCE USED AS BASIS FOR ESTABLISHING LOCATION. IF RE-ESTABLISHED THROUGH LOST CORNER PROPORTIONATE METHODS, INDICATE ALL MONUMENTS, DISTANCES AND DIRECTIONS USED TO ESTABLISH. INDICATE TYPE OF MONUMENT AND SIGN POST FOUND OR SET.

8/11/1978 Lester Schmidt Set a Berntsen monument to replace a 1" iron pipe that was found. The iron pipe fit with old recorded subdivisions to the North and South and the improvements to the South. Set four ties to the corner and filed tiesheet.

8/27/2014 I visited corner location and found Berntsen monument that was previously set in 1978. No ties to the corner remained. Accepted location of monument as the correct corner location and retied as shown below.

PLAN VIEW OF CORNER WITH TIES TO AT LEAST 4 WITNESS MONUMENTS. IF IN DISAGREEMENT WITH PREVIOUSLY ESTABLISHED CORNER, SHOW THE DISTANCES BETWEEN THE TWO CORNERS AND ALSO INDICATE THE TIES TO THE DISPUTED.



SCALE: 1" = 30'
Bearings Lincoln County Grid

RECEIVED BY LINCOLN COUNTY SURVEYOR THIS 30 DAY OF August 20 15
Zong Dahn
COUNTY SURVEYOR

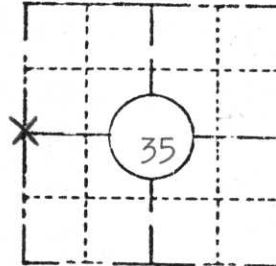


I, Emily K. Pierce, Professional Land Surveyor No. S-2728, hereby certify that the corner location on this record was determined by me or under my direction and control and that this U.S. Public Land Survey Monument Record is correct and complete to the best of my knowledge and belief.

Emily K. Pierce
Emily K. Pierce, PLS No. S-2728
STEIGERWALDT LAND SURVEYING, LLC

W-17

COUNTY Lincoln		
TOWN Bradley		
HIGHWAY U.S.H. 51 Freeway		
SECTION 35	TOWNSHIP T 35 N	RANGE R 6 E
TYPE OF LANDMARK West 1/4 corner		



LOCATION SKETCH
 (Location of landmark indicated by "x")

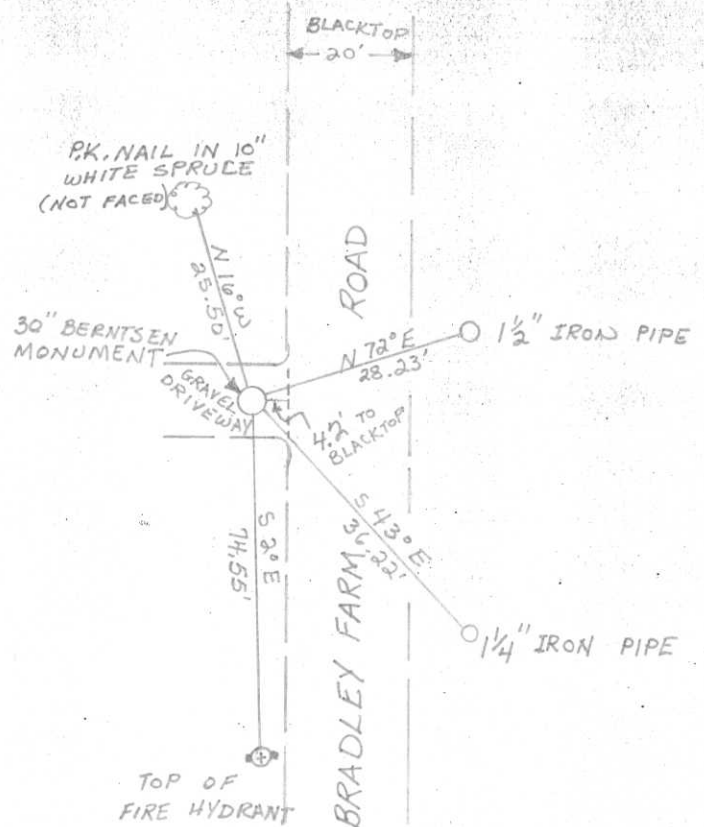


This space for copy of field notes or ties to the above described landmarks

Set Berntsen Monument to replace 1" iron pipe found. The iron pipe fits with old recorded subdivisions to the north and south and with improvements to the south.

Made ties.

Berntsen Monument set 2" below surface of gravel driveway.



FILED UNDER PROJECT U.S.H. 51 Freeway Number I.D. 1173-3-10		
DISTRICT OFFICE NUMBER 7	CITY Tomahawk	COUNTY Lincoln
LOCATED OR ESTABLISHED BY Timberland Surveyors, Inc.		
NAME <i>Lester J. Schmit</i>		
TITLE Land Surveyor S1192 DATE Aug. 1978		

COUNTY CLERK'S OFFICE COUNTY OF Lincoln WISCONSIN } 55	
DATE RECEIVED FOR RECORD 8/11/78	DATE COPY SENT TO COUNTY SURVEYOR
SIGNATURE OF COUNTY CLERK <i>Ken Oldalby</i>	

PRESERVATION OF LANDMARKS

PAGE _____



RECEIVED AT LINCOLN COUNTY
 COURTHOUSE THIS 14 DAY
 OF August 1978
Pat Riebel
 TAX DESCRIPTION OFFICE

21-7