

U.S. PUBLIC LAND SURVEY MONUMENT RECORD

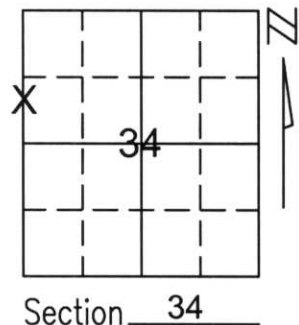
Note: This form is intended and designed to fulfill all requirements of Wisconsin Administrative Code, Chapter A-E 5.02, U.S. Public Land Survey Monument Record (3)(a)(b)(c)(d)(e)(f)(g)(h)(i). An additional sheet may be added if necessary to conform with said requirements.

(a) Corner location: Township 35 North

Range 6 East

Town/City/Village BRADLEY

County LINCOLN



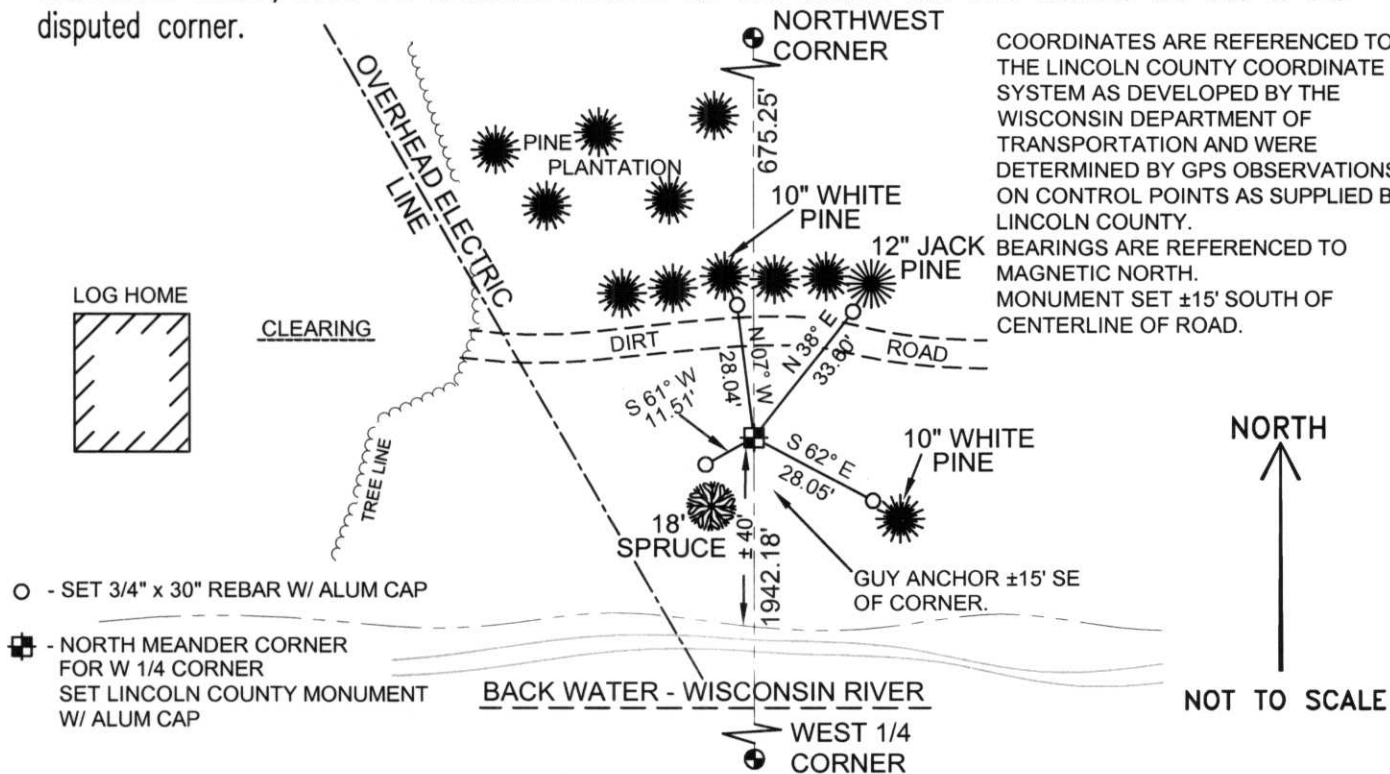
(b)(f)(g)(h) Description of monument found at this corner and if it was accepted, state all evidence (material, testimonial, occupational, plats, records, other monuments) used as a basis for accepting. If not accepted or if nothing was found, state evidence used as basis for establishing location. If reestablished through lost corner proportionate methods, indicate all monuments, distances and directions used to establish.

THE WEST 1/4 CORNER OF SECTION WAS RECREATED BY FINDING GOOD EVIDENCE IN THE ORIGINAL PLAT OF TOMAHAWK. WE VERIFIED ITS POSITION WHICH FALLS IN THE WISCONSIN RIVER.

THE MEANDER CORNER WAS THEN SET ON A LINE BETWEEN THE NORTHWEST CORNER OF SECTION 34 AND THE CALCULATED POSITION OF THE WEST 1/4 OF SECTION 34. SET LINCOLN COUNTY MONUMENT AND TIED OUT CORNER.

RECEIVED AT LINCOLN COUNTY
COURTHOUSE THIS 21ST DAY
OF December 20 01
Tony Walker
LAND INFORMATION OFFICE

(c)(d)(e) Plan view of corner with ties to at least 4 witness monuments. If in disagreement with previously established corner, show the distances between the two corners and also indicate the ties to the disputed corner.



(i) I, Thomas A. Radenz, RLS certify that the corner location on this record was determined by me or under my direction and control and that this U.S. Public Land Survey Monument Record is correct and complete to the best of my knowledge and belief.

Thomas A. Radenz
Signature _____ Date 12/21/01



Index No. 114-13