

U.S. PUBLIC LAND SURVEY MONUMENT RECORD

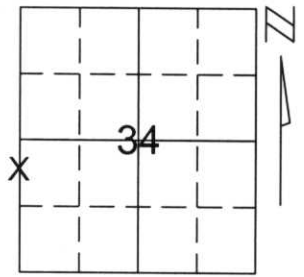
Note: This form is intended and designed to fulfill all requirements of Wisconsin Administrative Code, Chapter A-E 5.02, U.S. Public Land Survey Monument Record (3)(a)(b)(c)(d)(e)(f)(g)(h)(i). An additional sheet may be added if necessary to conform with said requirements.

(a) Corner location: Township 35 North

Range 6 East

Town/City/Village BRADLEY

County LINCOLN



Section 34

(b)(f)(g)(h) Description of monument found at this corner and if it was accepted, state all evidence (material, testimonial, occupational, plats, records, other monuments) used as a basis for accepting. If not accepted or if nothing was found, state evidence used as basis for establishing location. If reestablished through lost corner proportionate methods, indicate all monuments, distances and directions used to establish.

WE FOUND GOOD EVIDENCE FROM PAST SURVEYS IN THE ORIGINAL PLAT OF TOMAHAWK TO ESTABLISH THE POSITION OF THE WEST 1/4 CORNER OF SECTION 34 AND RESET THE SOUTHWEST CORNER OF SECTION 34. THE WEST 1/4 CORNER FALLS IN THE WISCONSIN RIVER SO A MEANDER CORNER WAS SET ON A LINE BETWEEN THE SOUTHWEST CORNER OF SECTION 34 (WHICH WILL BE RESET BY THE LINCOLN COUNTY SURVEYOR) AND THE CALCULATED POSITION OF THE WEST 1/4 CORNER OF SECTION 34.

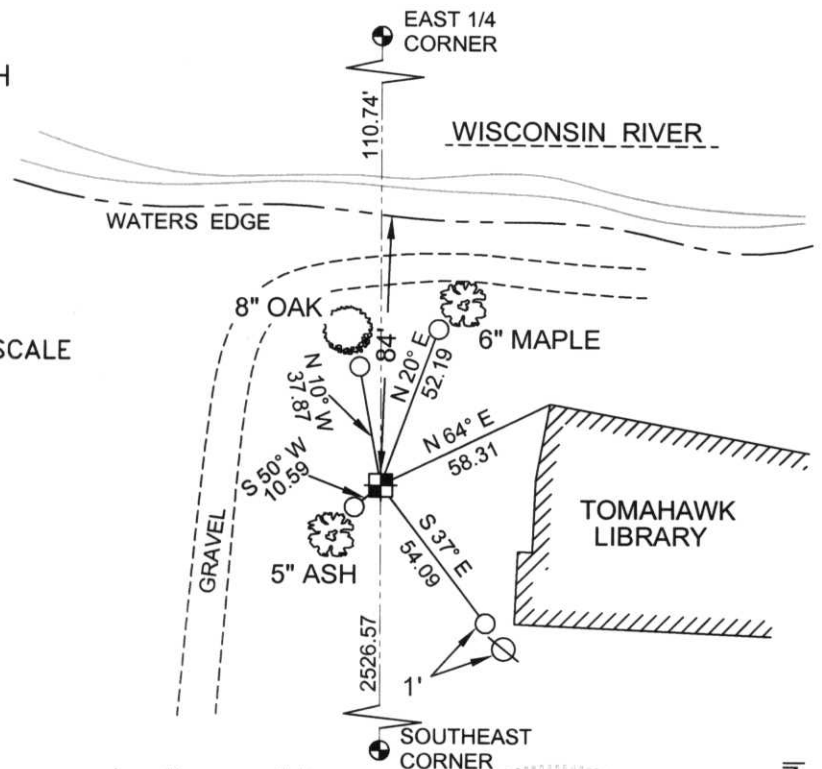
RECEIVED AT LINCOLN COUNTY
COURTHOUSE THIS 6TH DAY
OF February 20 02
Tom Radenz
LAND INFORMATION OFFICE

(c)(d)(e) Plan view of corner with ties to at least 4 witness monuments. If in disagreement with previously established corner, show the distances between the two corners and also indicate the ties to the disputed corner.

COORDINATES ARE REFERENCED TO THE LINCOLN COUNTY COORDINATE SYSTEM AS DEVELOPED BY THE WISCONSIN DEPARTMENT OF TRANSPORTATION AND WERE DETERMINED BY GPS OBSERVATIONS ON CONTROL POINTS AS SUPPLIED BY LINCOLN COUNTY.

BEARINGS ARE REFERENCED TO MAGNETIC NORTH.

NORTH
↑
NOT TO SCALE



- ⊗ - EXISTING LIGHT POLE
- - SET 3/4" x 30" REBAR W/ ALUM CAP 1' FROM BEARING TREE
- ⊠ - SOUTH MEANDER CORNER FOR W 1/4 CORNER SET LINCOLN COUNTY MONUMENT W/ ALUM CAP

(i) I, Thomas A. Radenz, RLS certify that the corner location on this record was determined by me or under my direction and control and that this U.S. Public Land Survey Monument Record is correct and complete to the best of my knowledge and belief.

Thomas A. Radenz

Signature

2/5/02

Date



Index No.
W/K-13