

# U.S. PUBLIC LAND SURVEY MONUMENT RECORD

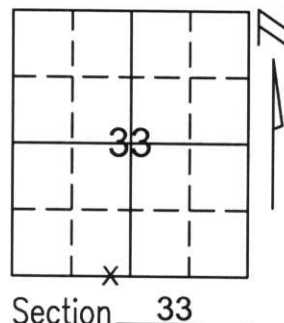
Note: This form is intended and designed to fulfill all requirements of Wisconsin Administrative Code, Chapter A-E 5.02, U.S. Public Land Survey Monument Record (3)(a)(b)(c)(d)(e)(f)(g)(h)(i). An additional sheet may be added if necessary to conform with said requirements.

(a) Corner location: Township 35 North

Range 6 East

Town/City/Village BRADLEY

County LINCOLN



Section 33

(b)(f)(g)(h) Description of monument found at this corner and if it was accepted, state all evidence (material, testimonial, occupational, plats, records, other monuments) used as a basis for accepting. If not accepted or if nothing was found, state evidence used as basis for establishing location. If reestablished through lost corner proportionate methods, indicate all monuments, distances and directions used to establish.

THE SOUTHWEST CORNER OF SECTION 33 FALLS IN THE WATER. WE FOUND TWO (2) IRON PIPES ON THE NORTH LINE OF THE NORTHEAST 1/4 OF SECTION 5 AND THREE (3) IRON PIPES ON THE EAST LINE OF THE NORTHEAST 1/4 OF SECTION 5, FROM A LESTER SCHMIDT'S PLAT OF SURVEY. WE INTERSECTED A LINE FROM THE NORTH 1/4 CORNER OF SECTION 5 THROUGH THE FOUND IRON PIPES ON THE NORTH LINE OF THE NORTHEAST 1/4 AND A LINE FROM THE EAST 1/4 OF SECTION 5 THROUGH THE FOUND IRONS ON THE EAST LINE OF THE NORTHEAST 1/4 OF SECTION 5. WE SET A LINCOLN COUNTY MONUMENT FOR THE EAST MEANDER CORNER ON LINE FROM CALCULATED SOUTHWEST CORNER OF SECTION 33 AND FOUND SOUTH 1/4 CORNER OF SECTION 33.

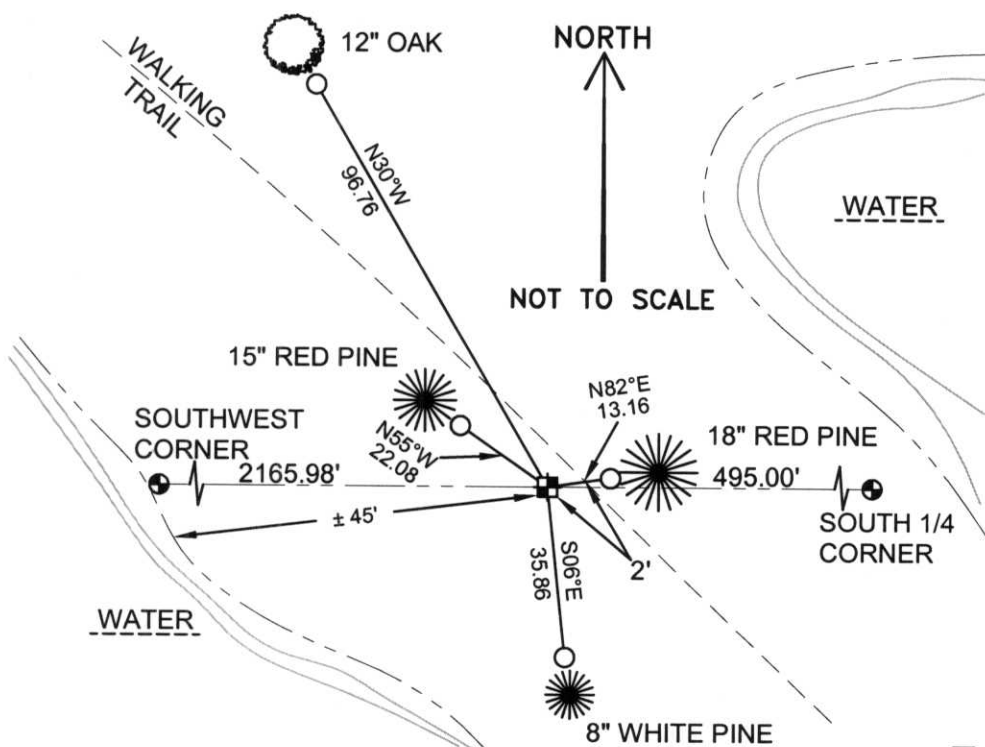
(c)(d)(e) Plan view of corner with ties to at least 4 witness monuments. If in disagreement with previously established corner, show the distances between the two corners and also indicate the ties to the disputed corner.

COORDINATES ARE REFERENCED TO THE LINCOLN COUNTY COORDINATE SYSTEM AS DEVELOPED BY THE WISCONSIN DEPARTMENT OF TRANSPORTATION AND WERE DETERMINED BY GPS OBSERVATIONS ON CONTROL POINTS AS SUPPLIED BY LINCOLN COUNTY.

BEARINGS ARE REFERENCED TO MAGNETIC NORTH.

○ - SET 3/4" x 30" REBAR W/ ALUM CAP 1' FROM BEARING TREE

■ - WEST MEANDER CORNER OF THE SW 1/4 CORNER SET LINCOLN COUNTY MONUMENT W/ ALUM CAP



(i) I, Thomas A. Radenz, RLS certify that the corner location on this record was determined by me or under my direction and control and that this U.S. Public Land Survey Monument Record is correct and complete to the best of my knowledge and belief.

Signature Thomas A. Radenz Date 12/21/01



Index No. Y-10,11