

U.S. PUBLIC LAND SURVEY MONUMENT RECORD

NOTE: THIS FORM IS INTENDED AND DESIGNED TO FULFILL ALL REQUIREMENTS OF WISCONSIN ADMINISTRATIVE CODE, CHAPTER A-E 7.08, U.S. PUBLIC LAND SURVEY MONUMENT RECORD (3)(a)(b)(c)(d)(e)(f)(g)(h)(i). ADDITIONAL SHEETS MAY BE NECESSARY TO CONFORM TO SAID REQUIREMENTS.

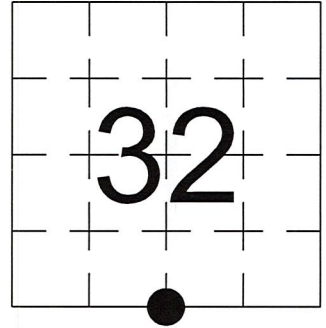
T 35 N, R 6 E

(a) CORNER LOCATION:

SOUTH 1/4 CORNER, SECTION 32
 TOWNSHIP 35 NORTH
 RANGE 6 EAST
 TOWN OF BRADLEY
 LINCOLN COUNTY
 WISCONSIN

(b) HISTORY OF ORIGINAL CORNER:

ORIGINAL SURVEYOR: See Previous Tie Sheet
 COMMENCING DATE:
 COMPLETION DATE:
 ORIGINAL BEARING TREES:



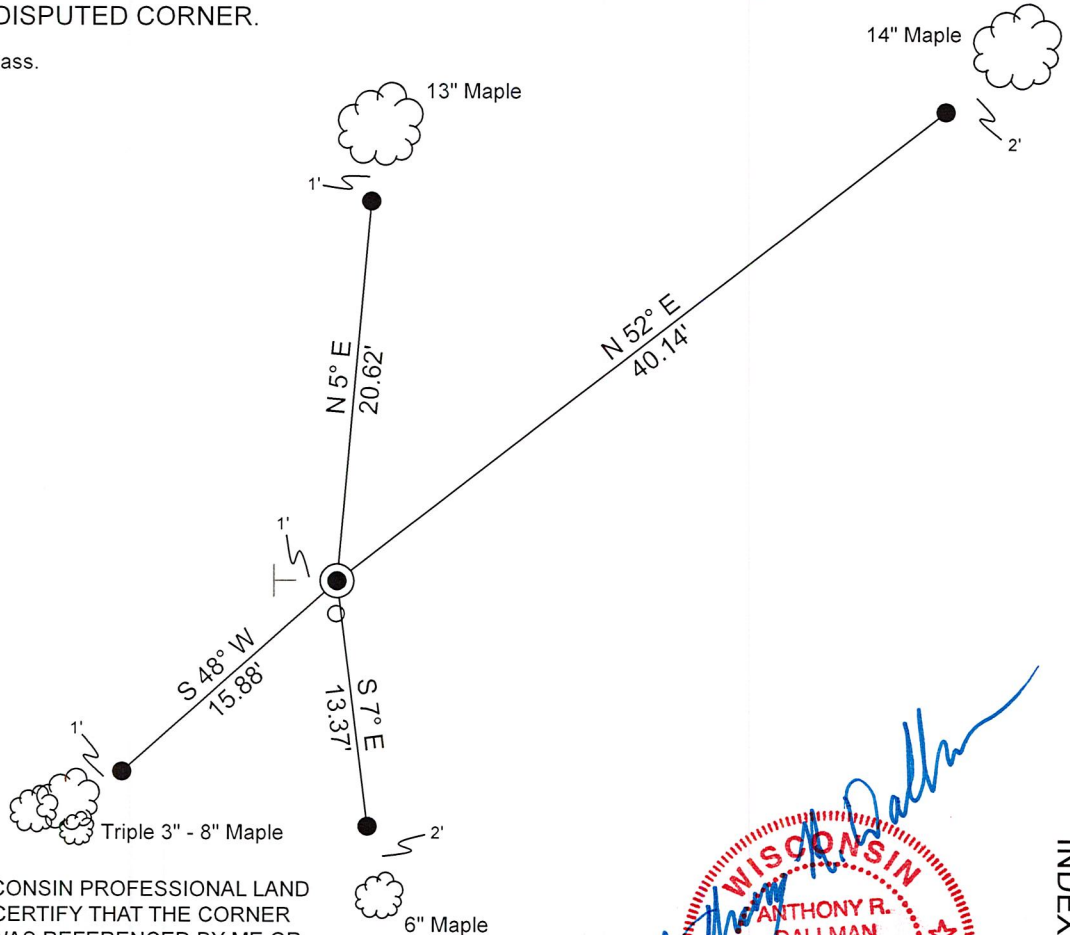
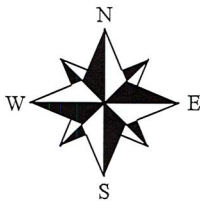
(f)(g)(h) DESCRIPTION OF MONUMENT FOUND AT THIS CORNER AND IF IT WAS ACCEPTED. STATE ALL EVIDENCE (MATERIAL, TESTIMONIAL, OCCUPATIONAL, PLATS, RECORDS, OTHER MONUMENTS) USED AS A BASIS FOR ESTABLISHING LOCATION. IF RE-ESTABLISHING THROUGH LOST CORNER PROPORTIONATE METHODS, INDICATE ALL MONUMENTS, DISTANCES, AND DIRECTIONS USED TO ESTABLISH. INDICATE TYPE OF MONUMENTS FOUND OR SET.

11/15/1974, Edwin Abendroth, set a Berntsen Monument.

11/07/2023, I, Anthony R. Dallman, PLS-2405, found a Berntsen Monument, up 3", with a 1 1/2" O.D. Iron Pipe, up 42", 0.4' South of said Berntsen. I accepted this location and set witness monuments, as shown in the sketch below, to further perpetuate the corner location.

(c)(d)(e) PLAN VIEW OF THE CORNER WITH TIES TO AT LEAST FOUR WITNESSES. IF IN DISAGREEMENT WITH PREVIOUSLY ESTABLISHED CORNER, SHOW THE DISTANCES BETWEEN THE TWO CORNERS AND ALSO THE TIES TO THE DISPUTED CORNER.

- Tie bearings by hand-held compass.
- Tie distances by steel tape.
- Not to scale.



- - 1 1/2" O.D. Iron Pipe
- - Set 3/4" Capped Rebar
- ⊥ - Set Vinyl Post

I, ANTHONY R. DALLMAN, WISCONSIN PROFESSIONAL LAND SURVEYOR, S-2405, HEREBY CERTIFY THAT THE CORNER LOCATION ON THIS RECORD WAS REFERENCED BY ME OR UNDER MY DIRECTION AND CONTROL AND THAT THIS U.S. PUBLIC LAND SURVEY MONUMENT RECORD IS COMPLETE TO THE BEST OF MY KNOWLEDGE AND BELIEF.

Anthony R. Dallman 02/14/24
 ANTHONY R. DALLMAN, PLS S-2405



INDEX NO. Y-07

43506320020

43506320020_Mon-N



43506320020_North



43506320020_West



43506320020_South



43506320020_East



CERTIFIED LAND CORNER RESTORATION

Index No. A-7

State of Wisconsin }
County of Lincoln } ss.

I _____, do hereby certify that on the 13th day of November, 1974, I found evidence of the N 1/4 corner of section 5 Township 34, North, Range 6 East, Fourth, Principal Meridian, as described hereon; and that from this evidence I established a new monument and accessories as described hereon to perpetuate the original location of this corner.

Resident witnesses:

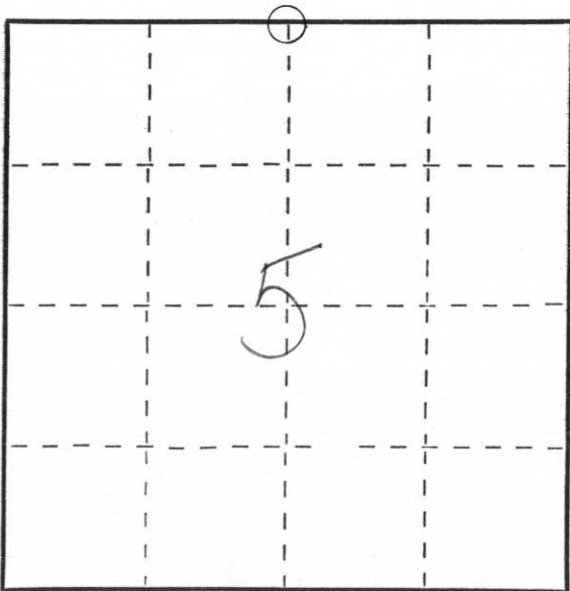
NONE

History of original corner establishment:

The original government survey was done in the year 1855. The original government notes show that the N 1/4 corner was set at 40.0 chains but there is no indication that there was a corner set. Bearing trees show that the corner was established and tied in. The bearing trees are an 8" white birch S 40 E at 19 links, an 8" white birch S 51 W at 27 links, an 8" white pine N 39 W at 15 links, and a 10" white birch N 41 E at 22 links.

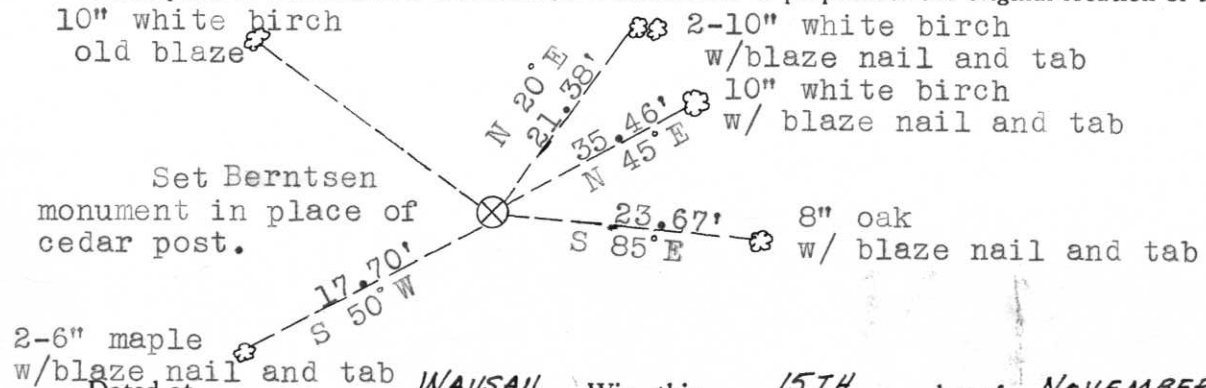
Description of corner evidence found:

A 4" square cedar post 4' high was sharpend at the bottom was found in place. The was weathered and appeared to be quite old. The post was identical to the W 1/4 corner which called for a post. Ablazed line was evident with an already blazed bearing tree. A 1 1/4" iron pipe was found directly beside the post.



○ = Corner monument restored.

Description of monument and accessories I established to perpetuate the original location of this corner.



Dated at WAUSAU, Wis., this 15TH day of NOVEMBER, 1974.

Signature Edwin R. Abendroth Title MARATHON CO. SURVEYOR Registration No. S-798
(County Surveyor, Registered Land Surveyor, or other duly authorized official)

Office of Register of Deeds, County of _____, I hereby certify that the within instrument was filed in this office for record on the _____ day of _____, 19____ at _____ o'clock _____ M.

(Register of Deeds)

By _____ Deputy