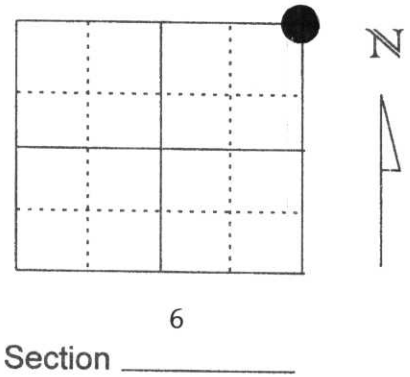


U.S. PUBLIC LAND SURVEY MONUMENT RECORD

Note: This form is intended and designed to fulfill all requirements of Wisconsin Administrative Code, Chapter A-E 5.02, U.S. Public Land Survey Monument Record (3) (a) (b) (c) (d) (e) (f) (g) (h) (i). An additional sheet may be added if necessary to conform with said requirements.

(a) Corner location: Township 34 North
 Range 6 East
 Town/City/Village TN. OF BRADLEY
 County Lincoln

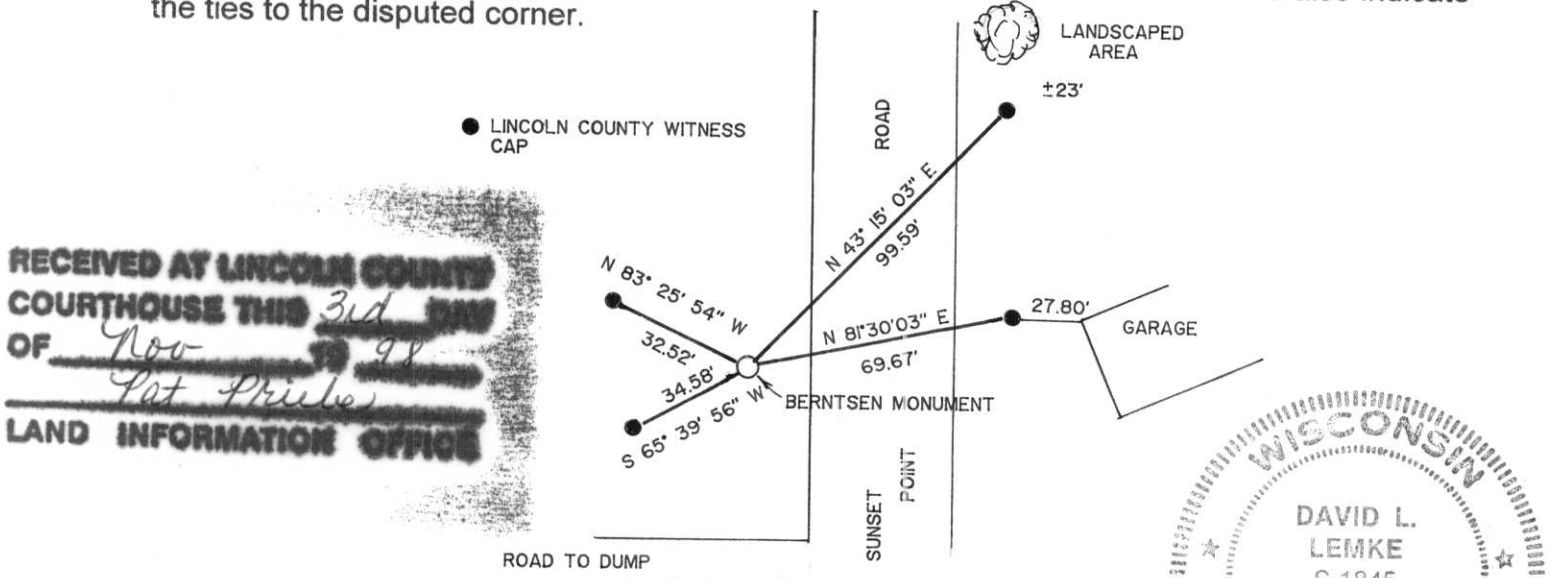


(b) (f) (g) (h) Description of monument found at this corner and if it was accepted, state all evidence (material, testimonial, occupational, plats, records, other monuments) used as a basis for accepting. If not accepted or if nothing was found, state evidence used as basis for establishing location. If reestablished through lost corner proportionate methods, indicate all monuments, distances and directions used to establish.

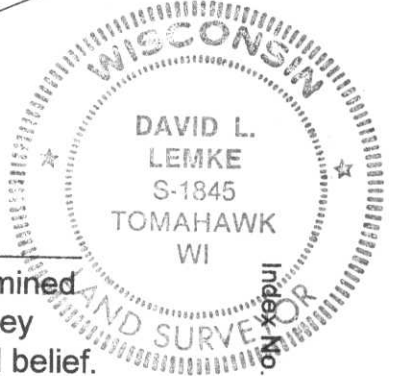
AUGUST 1996 RECONSTRUCTION OF SUNSET POINT ROAD REQUIRED REMOVAL OF SECTION CORNER. RESET AFTER CONSTRUCTION WAS DONE. SEE TIE SHET AUG.23,1996

SEPTEMBER 1998 TOWN OF BRADLEY CALLED AND SAID THE CORNER HAD BEEN REMOVED RESET A BERNTSEN MONUMENT ACCORDING TO TIE SHEET OF AUGUST 1996. CORNER FALLS IN THE DITCH LINE ON THE WEST SIDE OF SUNSET POINT ROAD ABOUT 58' NORTH OF THE ROAD TO THE DUMP.

(c) (d) (e) Plan view of corner with ties to at least 4 witness monuments. If in disagreement with previously established corner, show the distances between the two corners and also indicate the ties to the disputed corner.



RECEIVED AT LINCOLN COUNTY COURTHOUSE THIS 3rd DAY OF Nov 1998
 Pat Priole



(I) I, DAVID L. LEMKE
 (type or print name) certify that the corner location on this record was determined by me or under my direction and control and that this U.S. Public Land Survey Monument Record is correct and complete to the best of my knowledge and belief.

David L. Lemke Signature OCT 30 1998 Date

A-5

U.S. PUBLIC LAND SURVEY MONUMENT RECORD

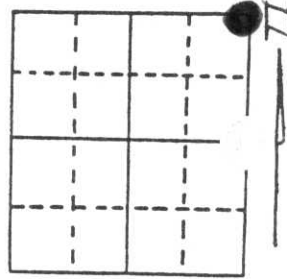
Note: This form is intended and designed to fulfill all requirements of Wisconsin Administrative Code, Chapter A-E 5.02, U.S. Public Land Survey Monument Record (3) (a) (b) (c) (d) (e) (f) (g) (h) (i). An additional sheet may be added if necessary to conform with said requirements.

(a) Corner location: Township 34 North

Range 6 East

Town/City/Village TN. BRADLEY

County LINCOLN



Section 6

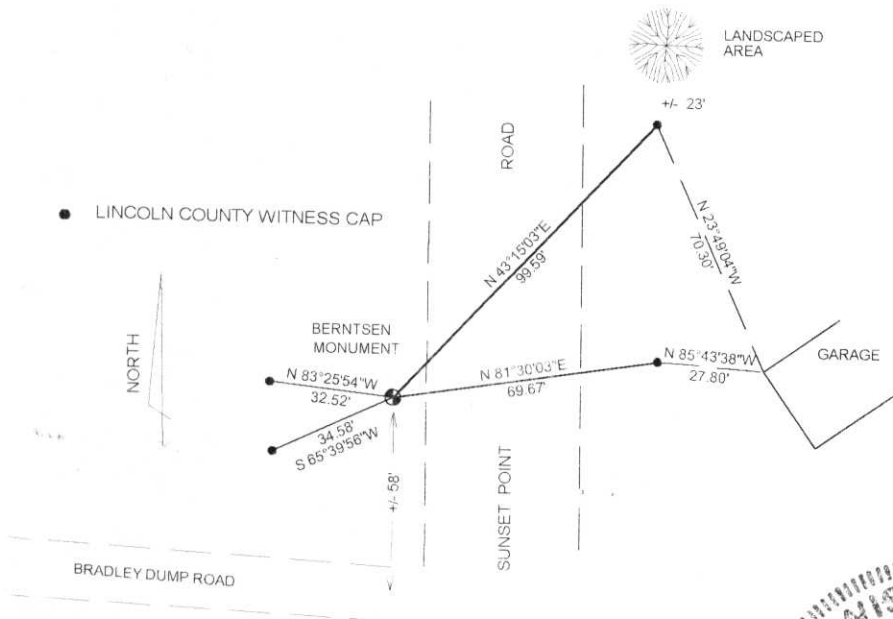
(b) (f) (g) (h) Description of monument found at this corner and if it was accepted, state all evidence (material, testimonial, occupational, plats, records, other monuments) used as a basis for accepting. If not accepted or if nothing was found, state evidence used as basis for establishing location. If reestablished through lost corner proportionate methods, indicate all monuments, distances and directions used to establish.

RECONSTRUCTION OF SUNSET POINT ROAD REQUIRED REMOVAL OF SECTION CORNER
FOUND BERNTSEN MONUMENT IN DITCH LINE.

*10/15/97
Dave Lemke asked us
to change tie sheet to
NE corner*

RECEIVED AT LINCOLN COUNTY
COURTHOUSE THIS 23rd DAY
OF Aug 19 96
Pat Priebe
TAX DESCRIPTION OFFICE

(c) (d) (e) Plan view of corner with ties to at least 4 witness monuments. If in disagreement with previously established corner, show the distances between the two corners and also indicate the ties to the disputed corner.



(i) I, DAVID L. LEMKE
(type or print name) certify that the corner location on this record was determined by me or under my direction and control and that this U.S. Public Land Survey Monument Record is correct and complete to the best of my knowledge and belief.

David Lemke

AUG. 22 1996

Signature

Date



Index No. A-5

CERTIFIED LAND CORNER RESTORATION

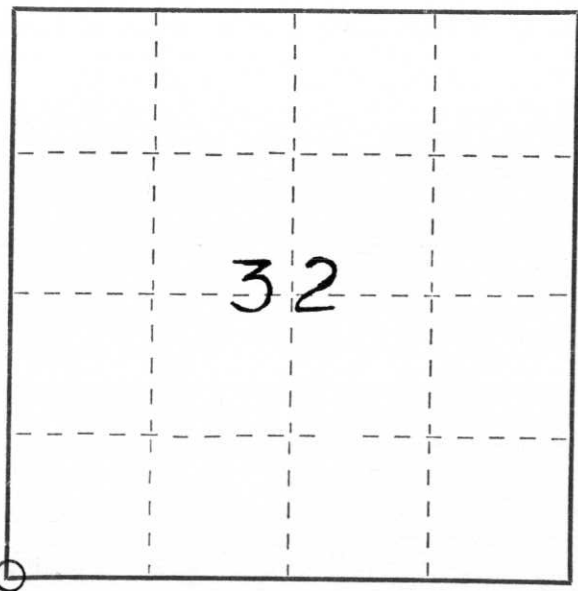
Index No. 4-5

State of Wisconsin }
 Lincoln } ss.
 County of _____

John H. Fisher
 I, _____, 25th., do hereby
 certify that on the _____ day
 of October, 19 82, I found
 evidence of the Southwest
 corner of Section 32
 Township 35, North, Range
6 East, Fourth, Principal Meridian,
 as described hereon; and that from this evidence
 I established a new monument and accessories
 as described hereon to perpetuate the original
 location of this corner.

Resident witnesses:

None



○ = Corner monument restored.

History of original corner establishment:
 The original survey by the Government was performed by James M. Marsh, Deputy Surveyor
 in August 1851.
 Set Wood Post

12" White Pine	S70°E	15 links
10" Birch	S67°W	20 links
7" Birch	N27°W	28 links
10" Tamarack	N58°E	30 links

Description of corner evidence found:

1-1/2" iron pipe and square wood post		
9" White Birch	S35°W	14.1 feet
10" Oak	N81°E	52.5 feet

Description of monument and accessories I established to perpetuate the original location of this corner.
 From the corner found, I established iron pipe witnesses

1-1/4" iron pipe	S35°E	10.0 feet
1-1/4" iron pipe	S63°W	10.0 feet
1-1/4" iron pipe	N39°W	10.0 feet
1-1/4" iron pipe	N18°E	10.0 feet

Dated at Minocqua, Wis., this 29th. day of March, 19 83

Signature John H. Fisher Title Registered Land Surveyor Registration No. S-836
 (County Surveyor, Registered Land Surveyor, or other duly authorized official)

Office of Register of Deeds, County of _____, I hereby certify that the within
 instrument was filed in this office for record on the _____ day of _____, 19 _____
 at _____ o'clock _____ M.

 (Register of Deeds)
 By _____ Deputy