

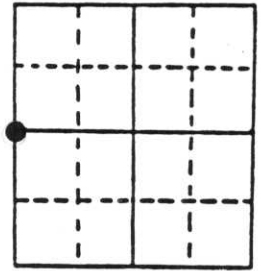
U.S. PUBLIC LAND SURVEY MONUMENT RECORD

Note: This form is intended and designed to fulfill all requirements of Wisconsin Administrative Code, Chapter A-E 7.08 U.S. Public Land Survey Monument Record (3) (a) (b) (c) (d) (e) (f) (g) (h) (i). An additional sheet may be added if necessary to conform with said requirements.

(a) Corner location: Township 35 North
 Range 6 East/West

Town/City/Village BRADLEY

County LINCOLN

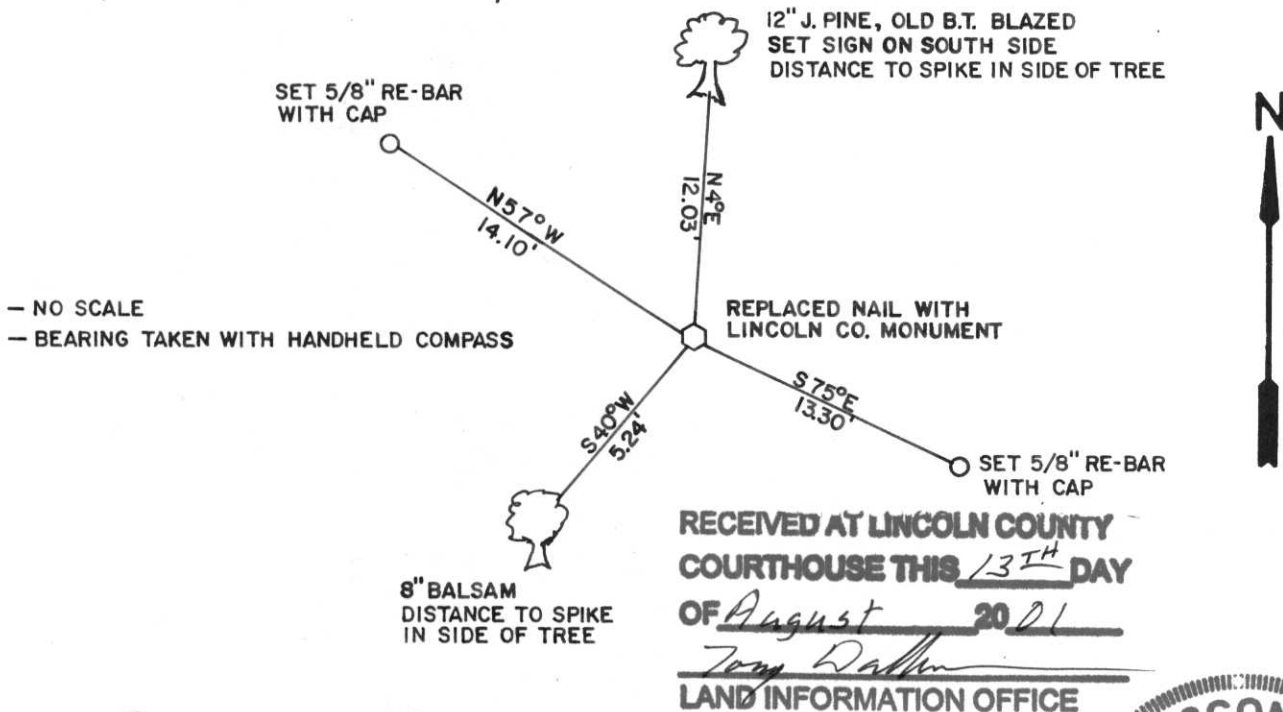


Section 29

(b) (f) (g) (h) Description of monument found at this corner and if it was accepted, state all evidence (material, testimonial, occupational, plats, records, other monuments) used as a basis for accepting. If not accepted or if nothing was found, state evidence used as basis for establishing location. If reestablished through lost corner proportionate methods, indicate all monuments, distances and directions used to establish. Indicate type of monument found or set and sign post.

July 1861 Alfred Millard set wood post for corner
 September 13 1977 O.I. set iron pipe for corner
 August 2000 I found a 3/4" I.P. lying on ground. Also found a spike which fits $\pm 1'$ & ± 3 minutes through the 1/16 to the north to the NW corner of Section from O.I. survey. Also found a 12" J. Pine with old blaze on south side $N4^\circ E 12.03'$ from spike.
 I replaced spike with Lincoln County Monument and witnessed it as shown below.

(c) (d) (e) Plan view of corner with ties to at least 4 witness monuments. If in disagreement with previously established corner, show the distances between the two corners and also indicate the ties to the disputed corner.



**RECEIVED AT LINCOLN COUNTY
 COURTHOUSE THIS 13TH DAY
 OF August 20 01**
Tom Dallen
LAND INFORMATION OFFICE

(i) I, RUSSELL F. BROWN
 (type or print name) certify that the corner location on this record was determined by me or under my direction and control and that this U.S. Public Land Survey Monument Record is correct and complete to the best of my knowledge and belief.

Russell F. Brown 8/10/01
 Signature Date



Stamp

Index No. 5-5