

U.S. PUBLIC LAND SURVEY MONUMENT RECORD

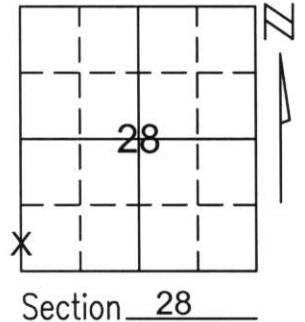
Note: This form is intended and designed to fulfill all requirements of Wisconsin Administrative Code, Chapter A-E 5.02, U.S. Public Land Survey Monument Record (3)(a)(b)(c)(d)(e)(f)(g)(h)(i). An additional sheet may be added if necessary to conform with said requirements.

(a) Corner location: Township 35 North

Range 6 East

Town/City/Village BRADLEY

County LINCOLN



(b)(f)(g)(h) Description of monument found at this corner and if it was accepted, state all evidence (material, testimonial, occupational, plats, records, other monuments) used as a basis for accepting. If not accepted or if nothing was found, state evidence used as basis for establishing location. If reestablished through lost corner proportionate methods, indicate all monuments, distances and directions used to establish.

THE SOUTHWEST CORNER OF SECTION 28 FALLS IN THE WATER. WE RESTABLISHED THE SW CORNER LOCATION BY INTERSECTING A LINE FROM THE WEST 1/4 CORNER THROUGH FOUND IRON PIPES, FROM LESTER SCHMIDT'S PLAT OF SURVEY ALONG THE WEST LINE OF THE SOUTHWEST 1/4 OF SECTION 28, AND FROM THE SOUTH 1/4 OF SECTION 28 THROUGH A FOUND MEANDER CORNER WITH BEARING TREES. WE SET A LINCOLN COUNTY MONUMENT FOR THE NORTH MEANDER CORNER ON LINE FROM THE WEST 1/4 CORNER TO THE CALCULATED SOUTHWEST CORNER 150 FEET NORTH OF THE WATER.

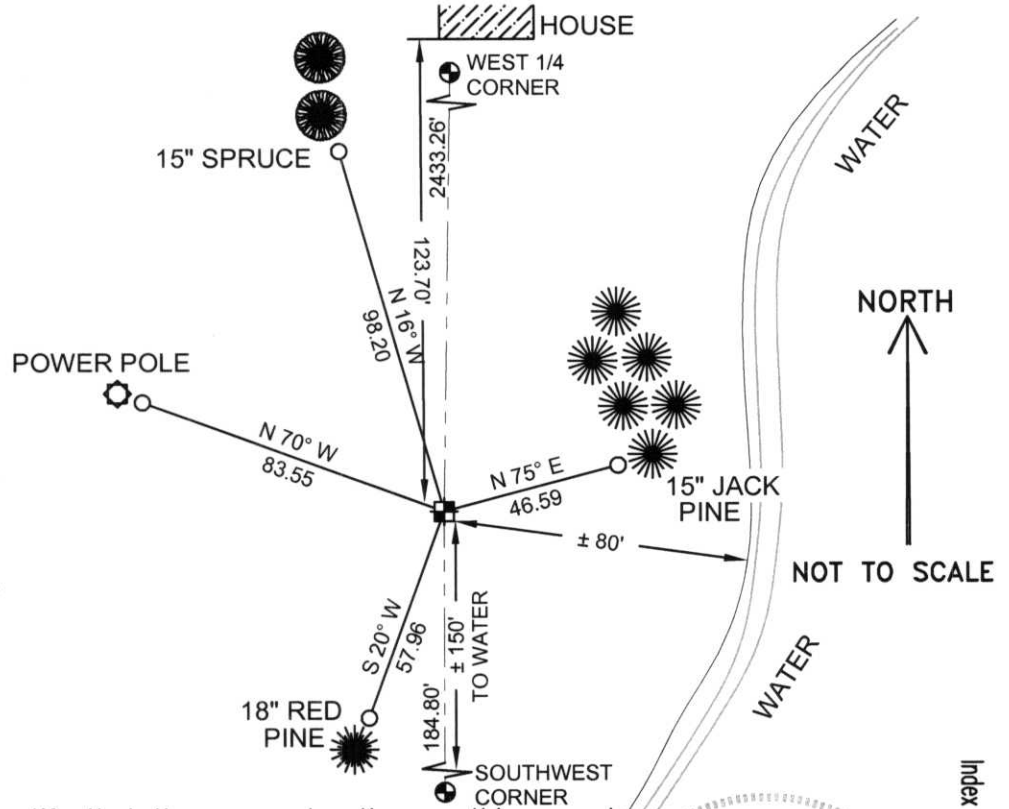
RECEIVED AT LINCOLN COUNTY
COURTHOUSE THIS 21ST DAY
OF December 20 01
Tom Dabbs
LAND INFORMATION OFFICE

(c)(d)(e) Plan view of corner with ties to at least 4 witness monuments. If in disagreement with previously established corner, show the distances between the two corners and also indicate the ties to the disputed corner.

COORDINATES ARE REFERENCED TO THE LINCOLN COUNTY COORDINATE SYSTEM AS DEVELOPED BY THE WISCONSIN DEPARTMENT OF TRANSPORTATION AND WERE DETERMINED BY GPS OBSERVATIONS ON CONTROL POINTS AS SUPPLIED BY LINCOLN COUNTY.

BEARINGS ARE REFERENCED TO MAGNETIC NORTH.

- - SET 3/4" x 30" REBAR W/ ALUM CAP 1' FROM BEARING TREE
- ⊕ - NORTH MEANDER CORNER OF SW 1/4 CORNER SET LINCOLN COUNTY MONUMENT W/ ALUM CAP



(i) I, Thomas A. Radenz, RLS certify that the corner location on this record was determined by me or under my direction and control and that this U.S. Public Land Survey Monument Record is correct and complete to the best of my knowledge and belief.

Thomas A Radenz Signature 12/21/01 Date



Index No. 74-9