

# U.S. PUBLIC LAND SURVEY MONUMENT RECORD

Note: This form is intended and designed to fulfill all requirements of the Wisconsin Administrative Code, Chapter A-E 7.08 U.S. Public Land Monument Record (3)(a)(b)(c)(d)(e)(f)(g)(h)(i). An additional sheet may be added if necessary to conform with said requirements.

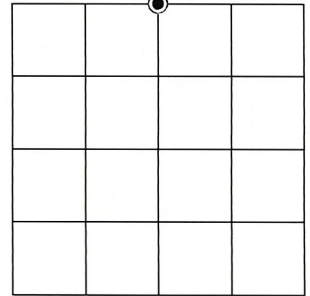
**(a) CORNER LOCATION:**

North Quarter Corner of Section 32  
 Township 35 North  
 Range 6 East  
 Town of Bradley  
 County of Lincoln

North:  
 East:  
 Datum:  
 GNSS Method:  
 GNSS Control:

(RECORDING AREA)

**SECTION 32**



**(b) HISTORY OF ORIGINAL CORNER ESTABLISHMENT**

Original Surveyor:  
 Date of Survey: Commenced \_\_\_\_\_  
 Completed \_\_\_\_\_  
 Original B.T.'S \_\_\_\_\_

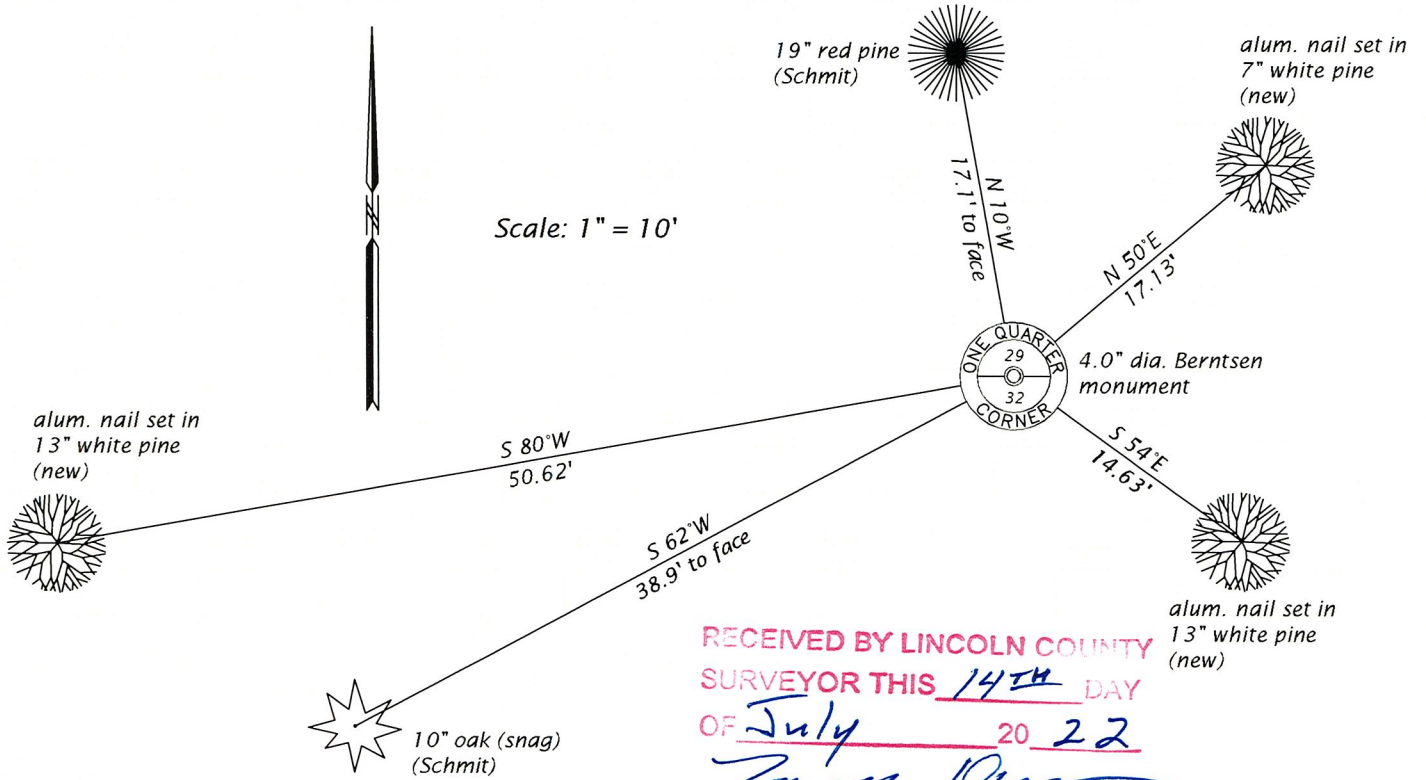
**SEE PREVIOUS U.S.P.L.S. MONUMENT RECORD DATED DECEMBER 10, 1990.**

(f)(g)(h) DESCRIPTION OF MONUMENT FOUND AT THIS CORNER AND IF IT WAS ACCEPTED, STATE ALL EVIDENCE (MATERIAL, TESTIMONIAL, OCCUPATIONAL, PLATS, RECORD, OTHER MONUMENTS) USED AS A BASIS FOR ESTABLISHING LOCATION. IF NOT ACCEPTED OR IF NOTHING WAS FOUND, STATE EVIDENCE USED AS BASIS FOR ESTABLISHING LOCATION. IF REESTABLISHED THROUGH LOST CORNER PROPORTIONATE METHODS, INDICATE ALL MONUMENTS, DISTANCES AND DIRECTIONS USED TO ESTABLISH. INDICATE TYPE OF MONUMENT AND SIGN POST FOUND OR SET.

This is a perpetuation of a previous U.S.P.L.S. Monument Record by Lester J. Schmit, RLS, dated December 10, 1990, and filed in the office of the Lincoln County Register of Deeds. A complete history of the corner can be found on the previous monument record. I accept the previous location as a true and faithful perpetuation or reestablishment of the original corner location and further perpetuate it as follows.

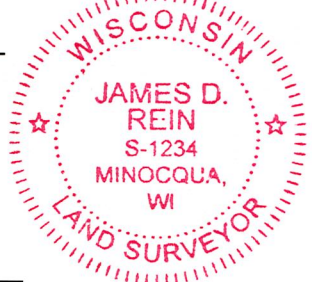
May 26, 2022, we found the Berntsen monument set by Schmit in 1990. The previous northwesterly pine and southwesterly oak bearing trees are the only remaining references to the monument. We made addition references. See below for updated references.

**(c)(d)(e) PLAN VIEW OF CORNER WITH TIES TO AT LEAST 4 WITNESS MONUMENTS. IF IN DISAGREEMENT WITH PREVIOUSLY ESTABLISHED CORNER, SHOW THE DISTANCE BETWEEN THE TWO CORNERS AND ALSO INDICATE THE TIES TO THE DISPUTED CORNER.**



RECEIVED BY LINCOLN COUNTY SURVEYOR THIS 14<sup>TH</sup> DAY OF July 20 22  
*James D. Rein*  
 COUNTY SURVEYOR

(i) I, JAMES D. REIN, PROFESSIONAL LAND SURVEYOR NO. S-1234 HEREBY CERTIFY THAT THE CORNER LOCATION ON THIS RECORD WAS DETERMINED BY ME OR UNDER MY DIRECTION AND CONTROL AND THAT THIS U.S. PUBLIC LAND SURVEY MONUMENT RECORD IS CORRECT AND COMPLETE TO THE BEST OF MY KNOWLEDGE AND BELIEF.



*James D. Rein*  
 SIGNATURE

7-12-22  
 DATE

INDEX NO. U-7

# U.S. PUBLIC LAND SURVEY MONUMENT RECORD

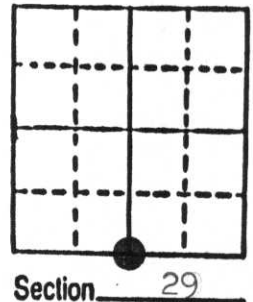
**Note:** This form is intended and designed to fulfill all requirements of Wisconsin Administrative Code, Chapter A-E 5.02, U.S. Public Land Survey Monument Record (3) (a) (b) (c) (d) (e) (f) (g) (h) (i). An additional sheet may be added if necessary to conform with said requirements.

(a) Corner location: Township 35 North

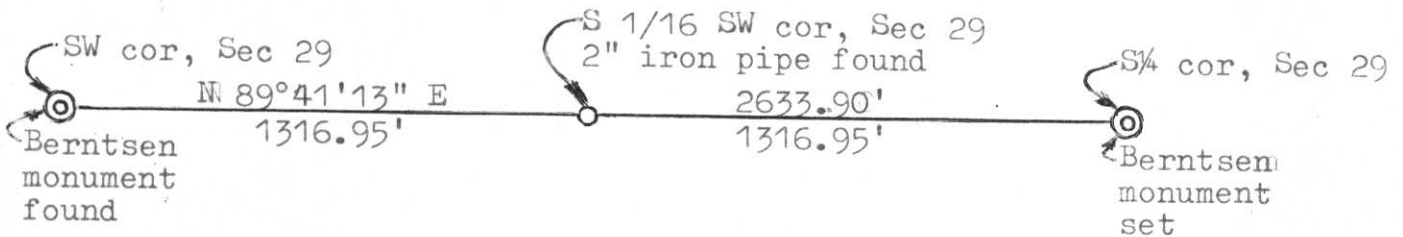
Range 6 East

Town Bradley

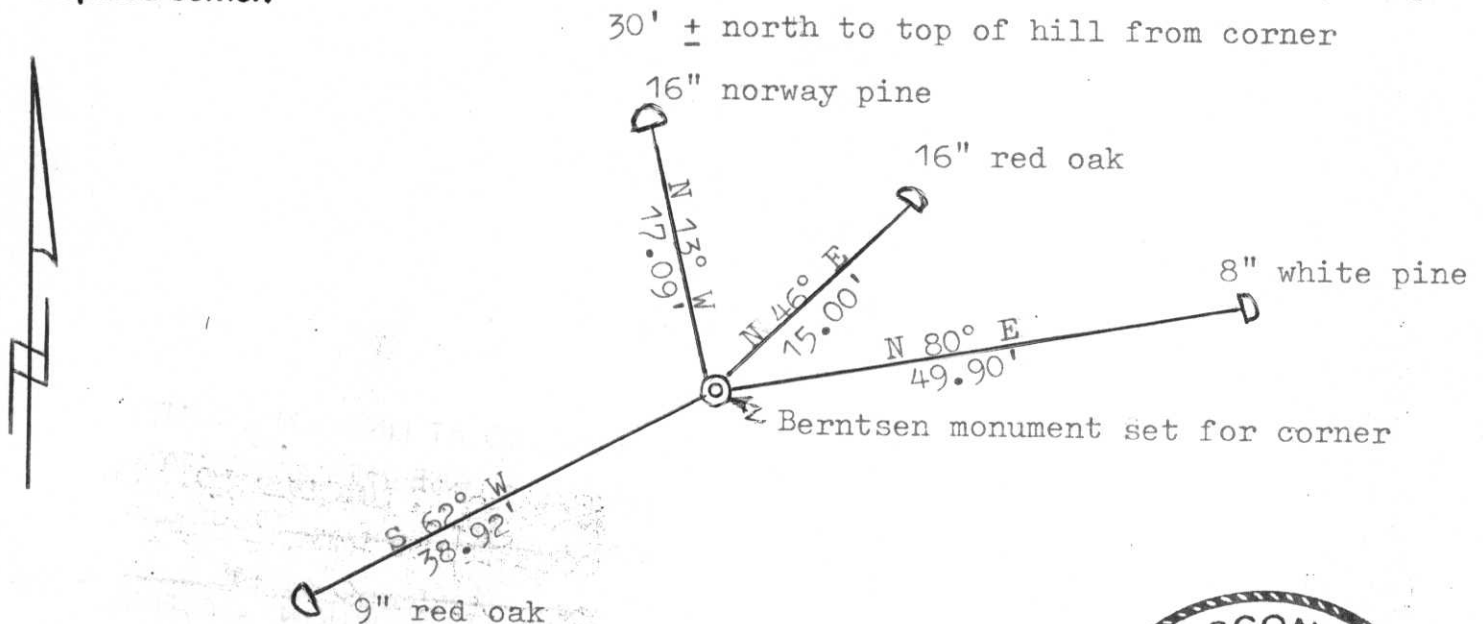
County Lincoln



b) (f) (g) (h) Description of monument found at this corner and if it was accepted, state all evidence (material, testimonial, occupational, plats, records, other monuments) used as a basis for accepting. If not accepted or if nothing was found, state evidence used as basis for establishing location. If reestablished through lost corner proportionate methods, indicate all monuments, distances and directions used to establish. Original Government Survey: July 1861 by Alfred Millar set wood post for corner with bearings, yellow pine 10 N 34 W 30 links & spruce pine 5 S 3 E 36 links. Upon a search for the corner location, I found nothing. A survey by Louis W. Lembcke set the 1/16 corner on the section line west of this corner. I doubled the distance from the Southwest corner of Section 29 (a Berntsen monument) through Lembcke's 1/16 corner to establish this corner location, as shown below.



c) (d) (e) Plan view of corner with ties to at least 4 witness monuments. If in disagreement with previously established corner, show the distances between the two corners and also indicate the ties to the disputed corner.



(i) I, Lester J. Schmit  
 (type or print name) certify that the corner location on this record was determined by me or under my direction and control and that this U.S. Public Land Survey Monument Record is correct and complete to the best of my knowledge and belief.

Lester J. Schmit                      10 Dec 90  
 Signature                                      Date



Index No. 4-2