

U.S. PUBLIC LAND SURVEY MONUMENT RECORD

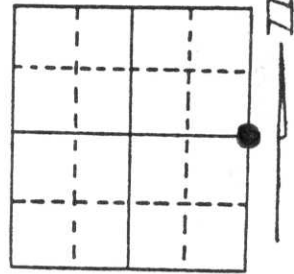
Note: This form is intended and designed to fulfill all requirements of Wisconsin Administrative Code, Chapter A-E 5.02, U.S. Public Land Survey Monument Record (3) (a) (b) (c) (d) (e) (f) (g) (h) (i). An additional sheet may be added if necessary to conform with said requirements.

(a) Corner location: Township 35 North

Range 6 East

Town/City/Village Tomahawk

County Lincoln



Section 28

(b) (f) (g) (h) Description of monument found at this corner and if it was accepted, state all evidence (material, testimonial, occupational, plats, records, other monuments) used as a basis for accepting. If not accepted or if nothing was found, state evidence used as basis for establishing location. If reestablished through lost corner proportionate methods, indicate all monuments, distances and directions used to establish. The corner location was marked by a cross on the west rail of the abandon railroad track. Before the rail was removed I tied off the corner location. Now the rail has been removed and I set a Berntsen monument at the location per the ties. All the previous ties to this corner location per the previous tie sheet for this corner are in good shape so no new ties will be needed.

(c) (d) (e) Plan view of corner with ties to at least 4 witness monuments. If in disagreement with previously established corner, show the distances between the two corners and also indicate the ties to the disputed corner.

(i) I, Lester J. Schmit

(type or print name) certify that the corner location on this record was determined by me or under my direction and control and that this U.S. Public Land Survey Monument Record is correct and complete to the best of my knowledge and belief.

Lester J. Schmit
Signature

5 Nov 92
Date



Index No. S-13

U.S. PUBLIC LAND SURVEY MONUMENT RECORD

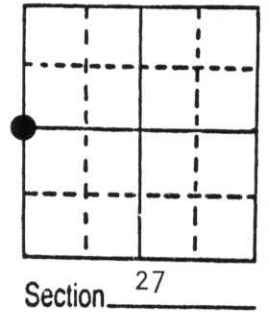
Note: This form is intended and designed to fulfill all requirements of Wisconsin Administrative Code, Chapter A-E 5.02, U.S. Public Land Survey Monument Record (3) (a) (b) (c) (d) (e) (f) (g) (h) (i). An additional sheet may be added if necessary to conform with said requirements.

(a) Corner location: Township 35 North

Range 6 East

Town Bradley City of Tomahawk

County Lincoln



b) (f) (g) (h) Description of monument found at this corner and if it was accepted, state all evidence (material, testimonial, occupational, plats, records, other monuments) used as a basis for accepting. If not accepted or if nothing was found, state evidence used as basis for establishing location. If reestablished through lost corner proportionate methods, indicate all monuments, distances and directions used to establish.

1861 - Alfred Millard, deputy surveyor set original quarter section post.
 Original bearing trees: Tamarack 7" S75°W, 23 links
 Tamarack 10" S78°E, 18 links

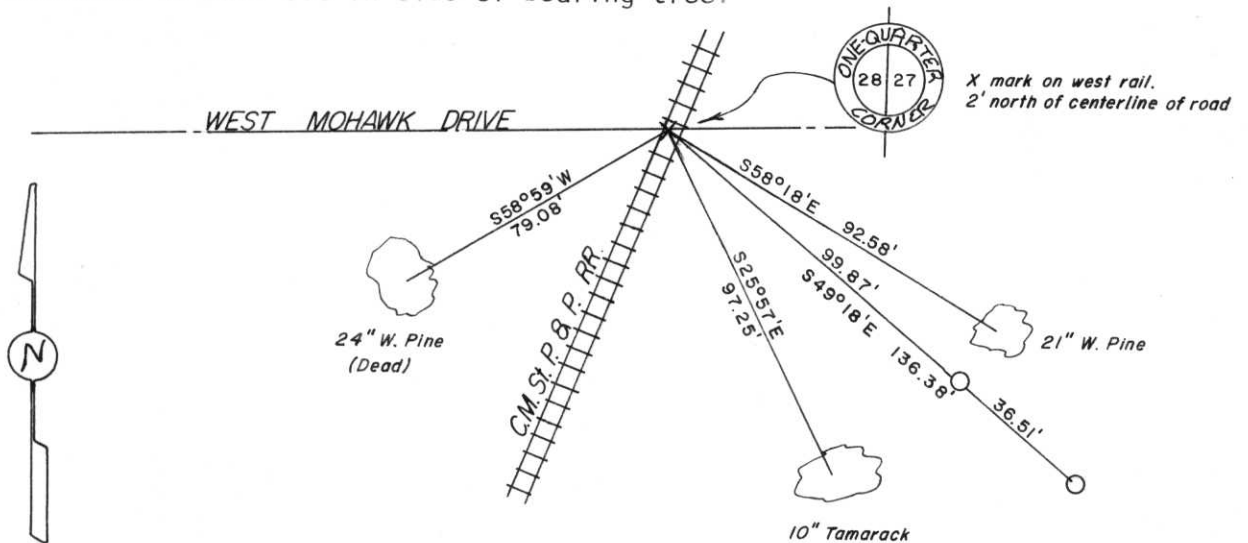
March 29, 1985 - Jerome N. Kraemer, Registered Land Surveyor, finds X on west rail of C.M.ST.P. & P. Railroad. Position accepted, used and shown on maps of survey by local surveyors.

Existing bearing trees found: 24" White Pine S58°-59'W, 79.08 feet
 (to 7" nail set in tree)
 10" Tamarack S25°-57'E, 97.25 feet
 to aluminum nail set in tree)

Established references as shown below.

c) (d) (e) Plan view of corner with ties to at least 4 witness monuments. If in disagreement with previously established corner, show the distances between the two corners and also indicate the ties to the disputed corner.

0= 3/4" dia. and 24" long iron pipe set
 Distances measured to nail set in side of bearing tree.



(i) I, JEROME N. KRAEMER, Reg. Land Surveyor No. S-1448

(type or print name) certify that the corner location on this record was determined by me or under my direction and control and that this U.S. Public Land Survey Monument Record is correct and complete to the best of my knowledge and belief.

April 23rd, 1985

Signature

Date



Index No. S-13