

U.S. PUBLIC LAND SURVEY MONUMENT RECORD

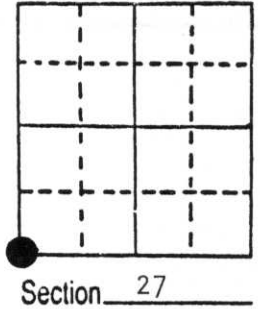
Note: This form is intended and designed to fulfill all requirements of Wisconsin Administrative Code, Chapter A-E 5.02, U.S. Public Land Survey Monument Record (3) (a) (b) (c) (d) (e) (f) (g) (h) (i). An additional sheet may be added if necessary to conform with said requirements.

(a) Corner location: Township 35 North

Range 6 East

Town Bradley City of Tomahawk

County Lincoln



(b) (f) (g) (h) Description of monument found at this corner and if it was accepted, state all evidence (material, testimonial, occupational, plats, records, other monuments) used as a basis for accepting. If not accepted or if nothing was found, state evidence used as basis for establishing location. If reestablished through lost corner proportionate methods, indicate all monuments, distances and directions used to establish.

1861 - Alfred Millard, deputy surveyor, set original post to corner of Sections 27, 28, 33 & 34. Original bearing trees: Spruce Pine 12", S30°W, 63 links and Spruce Pine, 4" N63°E, 19 links.

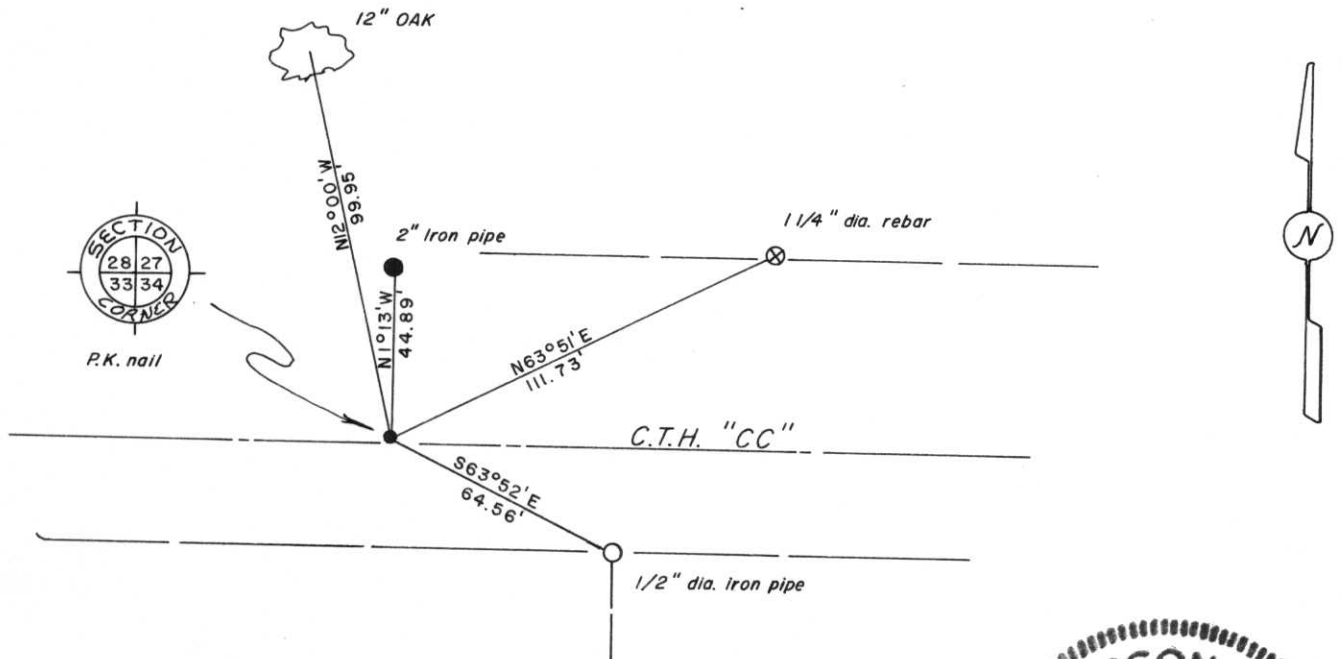
March 29, 1985- Jerome N. Kraemer, registered land surveyor, finds small hole two feet north of centerline of County Trunk Highway "CC". Corner position matches dimensions as used, accepted and mapped by local surveyors. Patched hole with blacktop and then set P.K. nail for section corner.

Existing bearing trees:

21" Oak, N12°W, 99.95 feet (to nail set in side of tree)

Established references as shown below.

(c) (d) (e) Plan view of corner with ties to at least 4 witness monuments. If in disagreement with previously established corner, show the distances between the two corners and also indicate the ties to the disputed corner.



JEROME N. KRAEMER, Registered Land Surveyor S-1448

(i) I, _____
(type or print name) certify that the corner location on this record was determined by me or under my direction and control and that this U.S. Public Land Survey Monument Record is correct and complete to the best of my knowledge and belief.



Jerome N. Kraemer April 23rd, 1985
Signature Date

Index No. V-13