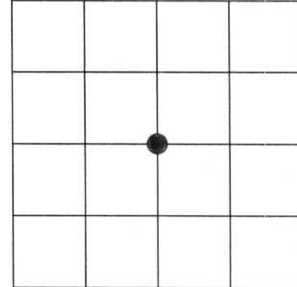


U.S. PUBLIC LAND SURVEY MONUMENT RECORD

Note: This form intended and designed to fulfill all requirements of Wisconsin Administrative Code, Chapter A-E 5.02, U.S. Public Land Survey Monument Record (3)(a)(b)(c)(d)(e)(f)(g)(h)(i). An additional sheet may be added if necessary to conform with said requirements.

(a) Corner Location: Township 35 North
Range 6 East

Town (City) / Village TOMAHAWK
County LINCOLN

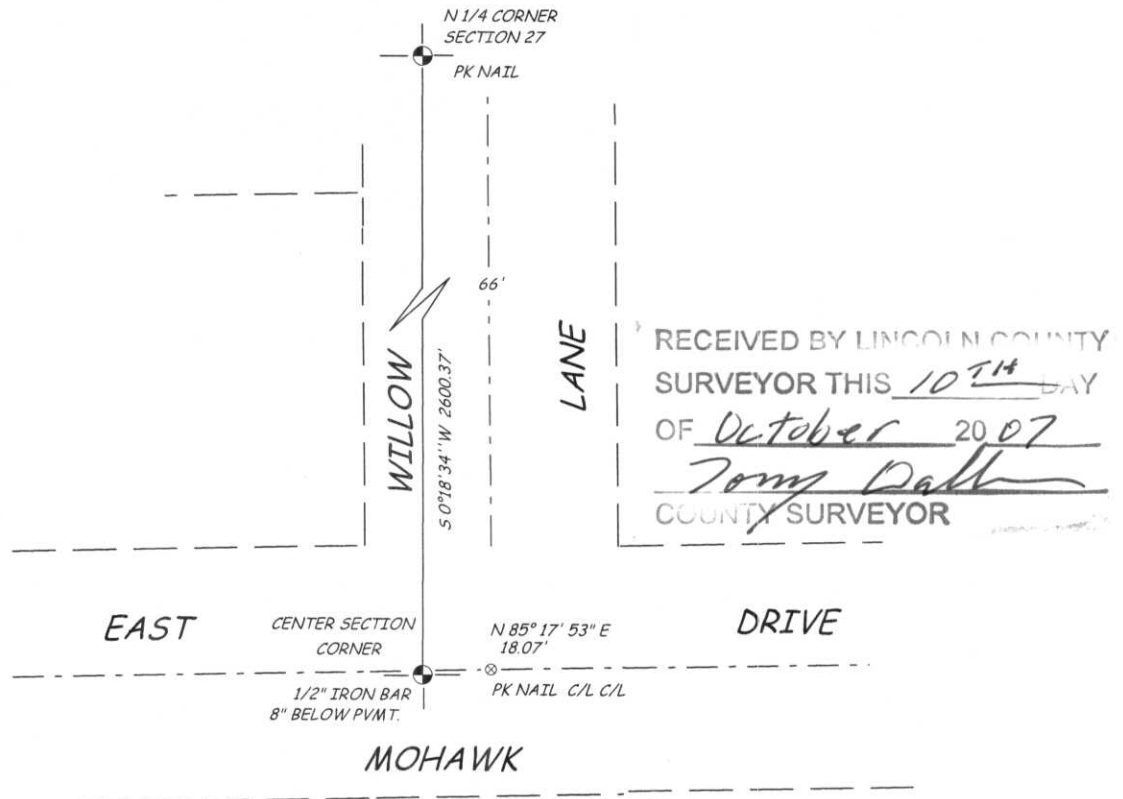


Section 27

(b)(f)(g)(h) Description of monument found at this corner and if it was accepted, state all evidence (material, testimonial, occupational, plats, records, other monuments) used as a basis for accepting. If not accepted or if nothing was found, state evidence used as basis for establishing location. If reestablishing through lost corner proportionate methods, indicate all monuments, distances and directions used to establish.

FOUND A 1/2" IRON BAR +/- 8" BELOW PAVEMENT LINING UP WITH A CUT LINE TO THE SOUTH. ABOUT 18 FEET WEST OF A VERY OLD PK NAIL SET C/L C/L WITH EAST MOHAWK DRIVE AND WILLOW LANE EXTENDING TO THE NORTH. BAR POSITION CHECKED WITH THE SECTION SUMMARY ON FILE IN COUNTY SURVEYORS OFFICE.

(c)(d)(e) Plan view of corner with ties to at least 4 witness monuments. If in disagreement with previously established corner, show the distances between the two corners and also indicate the ties to the disputed corner.



(i) I, David L. Lemke, RLS - 1845, hereby certify that the corner location shown hereon was determined by me under my direction and control and that this U.S. Public Land Survey Monument Record is correct and complete to the best of my knowledge and belief.

[Handwritten signature of David L. Lemke]



Index No. _____