

U.S. PUBLIC LAND SURVEY MONUMENT RECORD

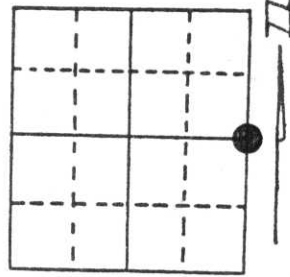
Note: This form is intended and designed to fulfill all requirements of Wisconsin Administrative Code, Chapter A-E 5.02, U.S. Public Land Survey Monument Record (3) (a) (b) (c) (d) (e) (f) (g) (h) (i). An additional sheet may be added if necessary to conform with said requirements.

(a) Corner location: Township 35 North

Range 6 East

Town/City ~~Bradley~~ Bradley/Tomahawk

County Lincoln

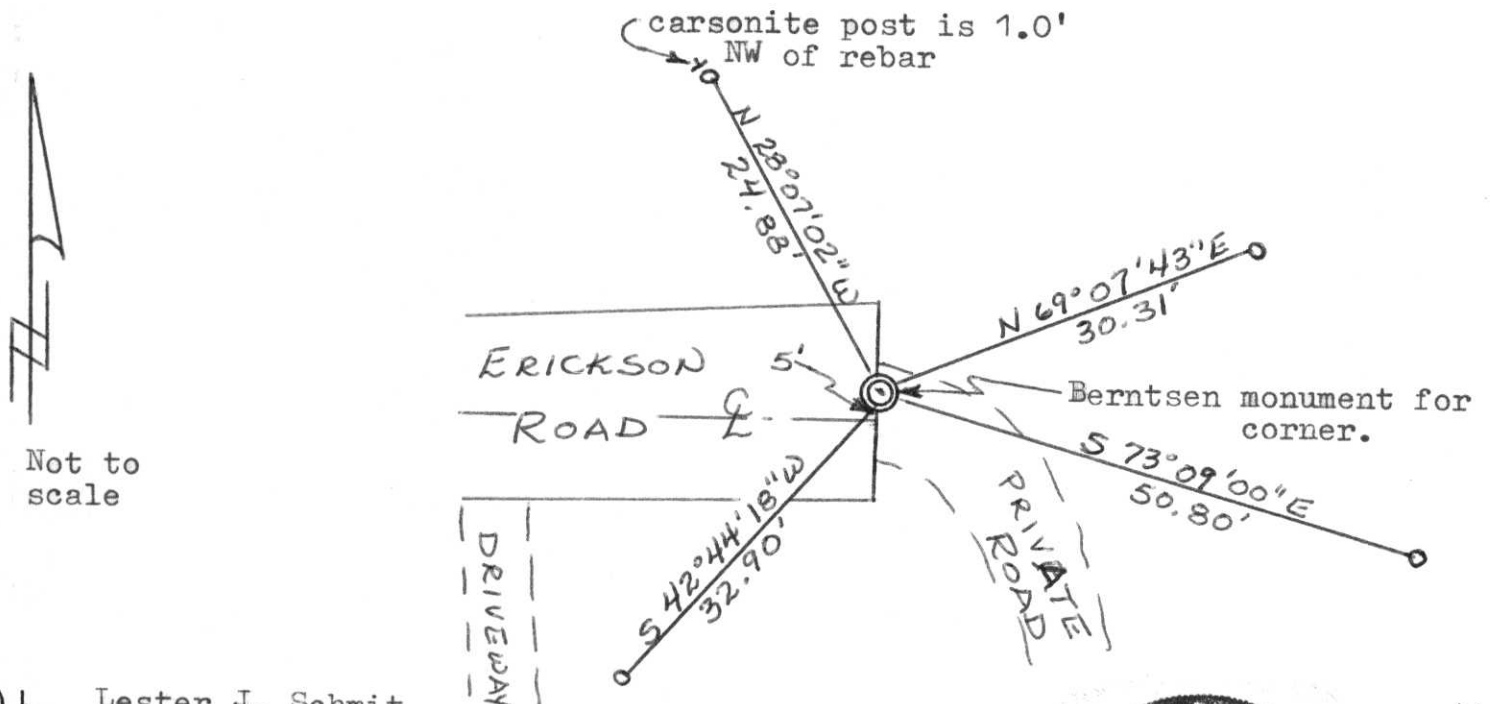


Section 26

(b) (f) (g) (h) Description of monument found at this corner and if it was accepted, state all evidence (material, testimonial, occupational, plats, records, other monuments) used as a basis for accepting. If not accepted or if nothing was found, state evidence used as basis for establishing location. If reestablished through lost corner proportionate methods, indicate all monuments, distances and directions used to establish. Original Gov't. Survey: July 1861 by Alfred Millard set wood post for corner with bearings, yellow pine 8 S 75° W 23 links & yellow pine 8 S 88° E 29 links. During a survey in May 1969 by James G. Griffin of Northwoods Surveyors of Section 25, he called for an iron pipe for the corner, found in place. He made witnesses as follows, 20" white pine S 66° E 56.8' & 14" double white pine S 21° E 37.0'. I found the iron pipe & witnesses. I replaced the iron pipe with a Berntsen monument, the top being 6" below the surface of Erickson Road. I referenced the corner with 7/8" capped iron rebars as shown below.

**RECEIVED AT LINCOLN COUNTY
COURTHOUSE THIS 14th DAY
OF Dec. 19 95
Pat Priddy
TAX DESCRIPTION OFFICE**

(c) (d) (e) Plan view of corner with ties to at least 4 witness monuments. If in disagreement with previously established corner, show the distances between the two corners and also indicate the ties to the disputed corner.



(i) I, Lester J. Schmit
(type or print name) certify that the corner location on this record was determined by me or under my direction and control and that this U.S. Public Land Survey Monument Record is correct and complete to the best of my knowledge and belief.

Lester J. Schmit
Signature

11 Dec 95
Date



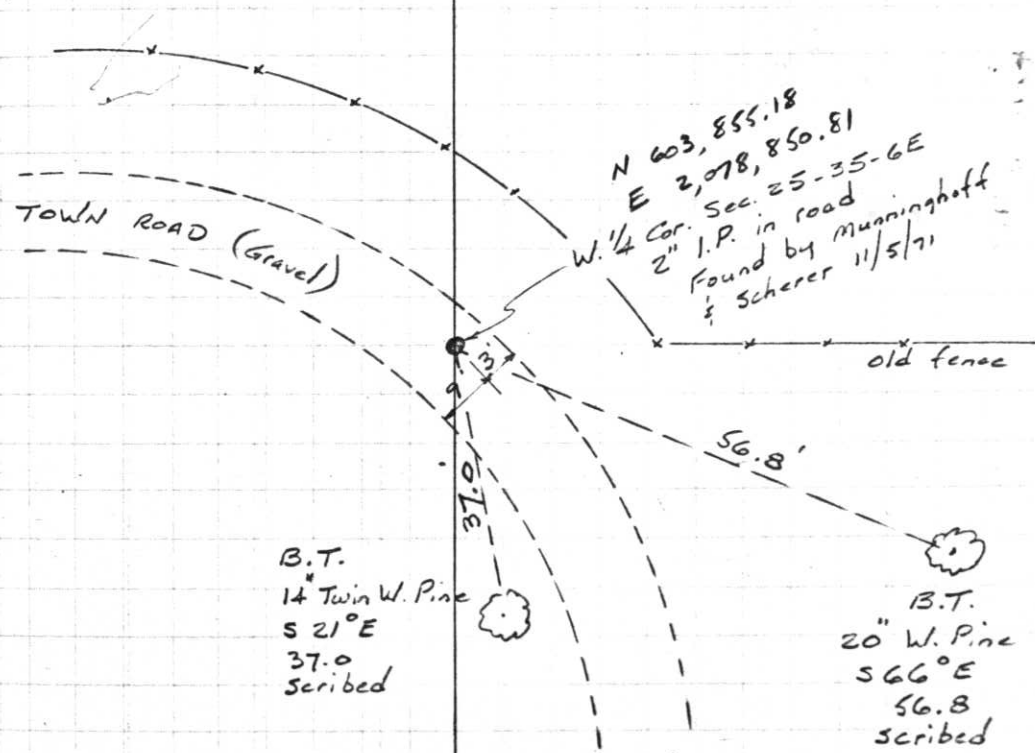
Index No. 5-21

104

Project I.D. 1173-3-00 C.T.H. "S"
U.S.H.8 U.S.H. 51 Freeway Lincoln
Co. Wm. Scherer Surveyor Received
from Division of Hwy's Jan. 11, 1973

T35N R6E

Nov. 5, 1971



Note: Corner found by using survey plat furnished by NORTHWOODS SURVEYORS.