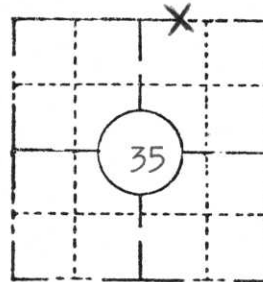


COUNTY Lincoln		
TOWN Bradley		
HIGHWAY U.S.H. 51 Freeway		
SECTION 35	TOWNSHIP T 35 N	RANGE R 6 E
TYPE OF LANDMARK Meander corner on east bank Wis. River, between Sec. 26 & 35		



LOCATION SKETCH
 (Location of landmark indicated by "x")

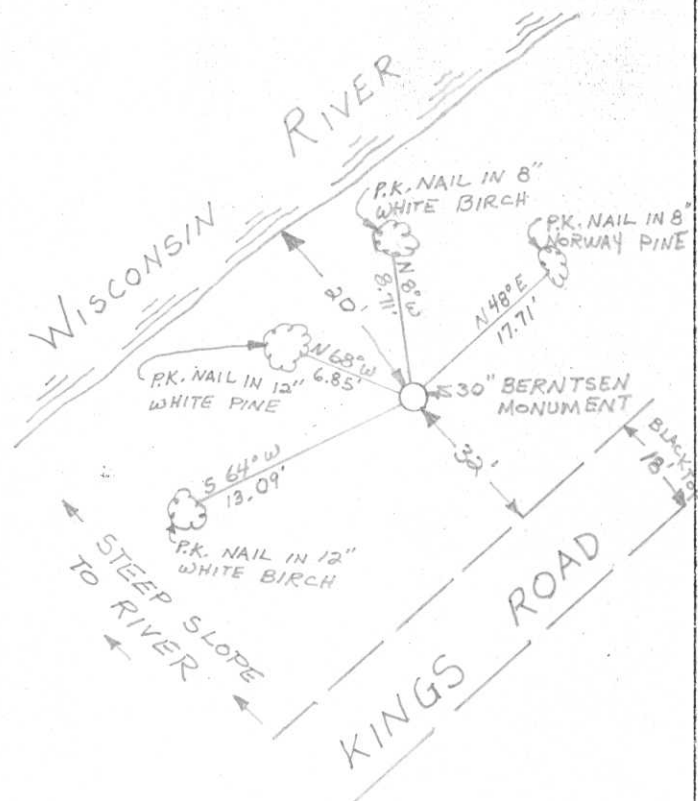


This space for copy of field notes or ties to the above described landmarks

By use of Northwoods Surveyors map no. 1-34-356 and Wilderness Surveying, Inc. map no. 77-215, determined the location of NW cor., Sec 35, which falls in Wis. River. Set Berntsen Monument on straight line between NW and NE cor. of Sec 35 at its intersection with the Wis. River.

Made new B.T.'s.

Berntsen Monument set 2" above ground. Steep slope from road to river.



FILED UNDER PROJECT U.S.H. 51 Freeway Number I.D. 1173-3-10			COUNTY CLERK'S OFFICE COUNTY OF Lincoln WISCONSIN } 55	
DISTRICT OFFICE NUMBER 7	CITY Tomahawk	COUNTY Lincoln	DATE RECEIVED FOR RECORD 8/11/78	DATE COPY SENT TO COUNTY SURVEYOR
LOCATED OR ESTABLISHED BY Timberland Surveyors, Inc.			SIGNATURE OF COUNTY CLERK Ken Olsenburg	
NAME Lester J. Schmit				
TITLE Land Surveyor S1192			DATE Aug 1978	

PRESERVATION OF LANDMARKS

PAGE _____



RECEIVED AT LINCOLN COUNTY COURTHOUSE THIS 14 DAY OF August 1978.
Pat Perich
 TAX DESCRIPTION OFFICE

U-19.20