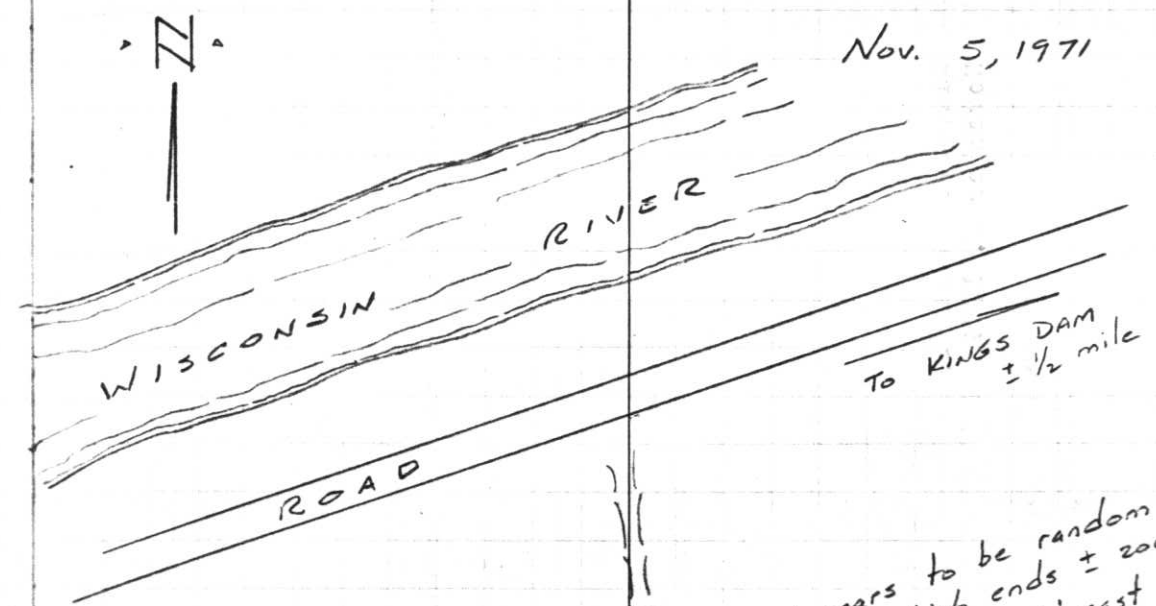


U-21

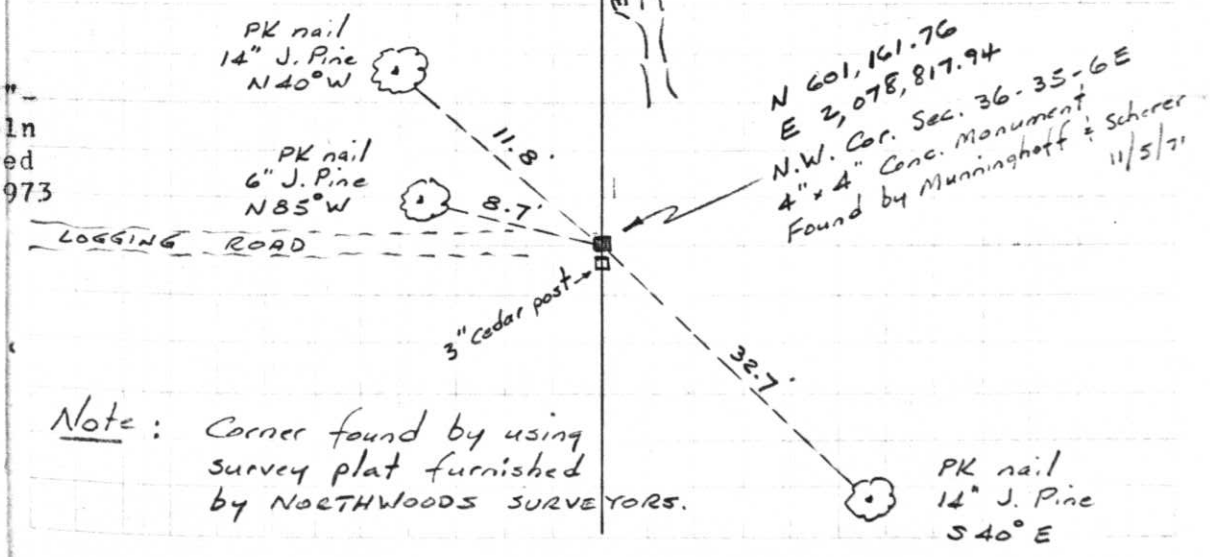
T35N R6E

Nov. 5, 1971



Appears to be random line which ends ± 200' north and ± 50' east of corner.

Project I.D. 1173-3-00 C.T.H."S"  
 U.S.H.8 U.S.H. 51 Freeway Lincoln  
 Co. Wm. Scherer Surveyor Received  
 from Division of Hwy's Jan. 11, 1973



Note: Corner found by using survey plat furnished by NORTHWOODS SURVEYORS.

110.

# U.S. PUBLIC LAND SURVEY MONUMENT RECORD

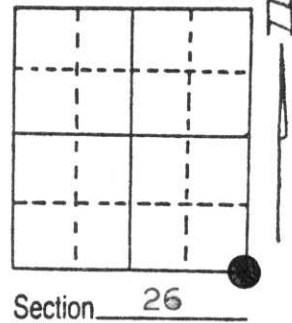
Note: This form is intended and designed to fulfill all requirements of Wisconsin Administrative Code, Chapter A-E 5.02, U.S. Public Land Survey Monument Record (3) (a) (b) (c) (d) (e) (f) (g) (h) (i). An additional sheet may be added if necessary to conform with said requirements.

(a) Corner location: Township 35 North

Range 6 East

Town/City/ ~~Wing~~ Bradley/Tomahawk

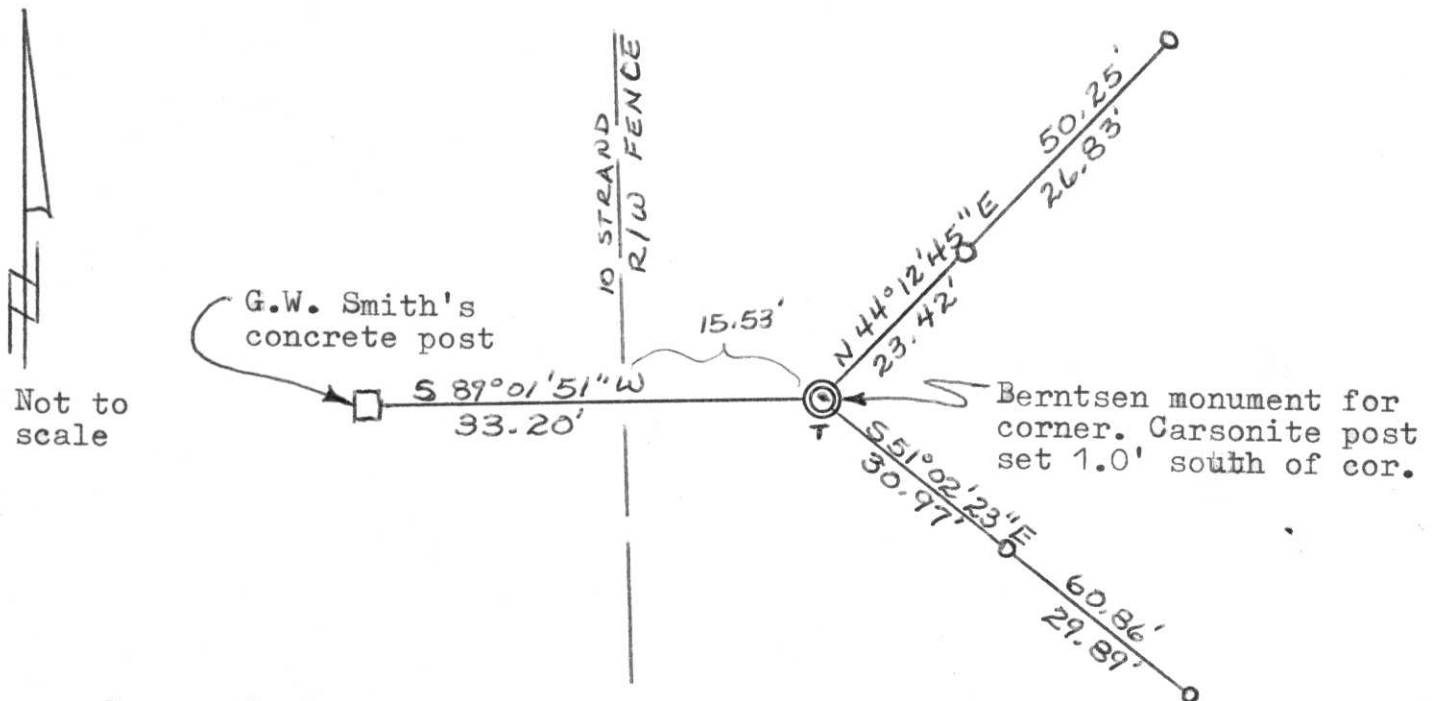
County Lincoln



(b) (f) (g) (h) Description of monument found at this corner and if it was accepted, state all evidence (material, testimonial, occupational, plats, records, other monuments) used as a basis for accepting. If not accepted or if nothing was found, state evidence used as basis for establishing location. If reestablished through lost corner proportionate methods, indicate all monuments, distances and directions used to establish. Original Gov't Survey: July 1861 by Alfred Millard set wood post for corner with bearings, spruce pine 5 N 44° W 24 links, spruce pine 6 S 80° W 20 links, spruce pine 6 S 50° E 19 links & spruce pine 10 N 48° E 11 links. In 1925, G. W. Smith called for an iron pipe for the corner with a concrete post for a witness, west 33'. I found the iron pipe & the witness post. I replaced the iron pipe with a Berntsen monument for the corner & referenced it with 7/8" capped iron rebars as shown below.

**RECEIVED AT LINCOLN COUNTY  
COURTHOUSE THIS 14th DAY  
OF Dec. 19 95  
Pat Priike  
**TAX DESCRIPTION OFFICE****

(c) (d) (e) Plan view of corner with ties to at least 4 witness monuments. If in disagreement with previously established corner, show the distances between the two corners and also indicate the ties to the disputed corner.



(i) I, Lester J. Schmit  
(type or print name) certify that the corner location on this record was determined by me or under my direction and control and that this U.S. Public Land Survey Monument Record is correct and complete to the best of my knowledge and belief.

Lester J. Schmit                      11 Dec 95  
Signature                                      Date



Index No. U-21