

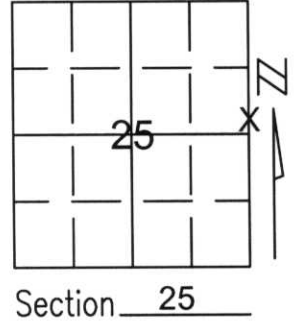


Stock No. 26273

U.S. PUBLIC LAND SURVEY MONUMENT RECORD

Note: This form is intended and designed to fulfill all requirements of Wisconsin Administrative Code, Chapter A-E 5.02, U.S. Public Land Survey Monument Record (3)(a)(b)(c)(d)(e)(f)(g)(h)(i). An additional sheet may be added if necessary to conform with said requirements.

(a) Corner location: Township 35 North
Range 6 East
Town/City/Village BRADLEY
County LINCOLN



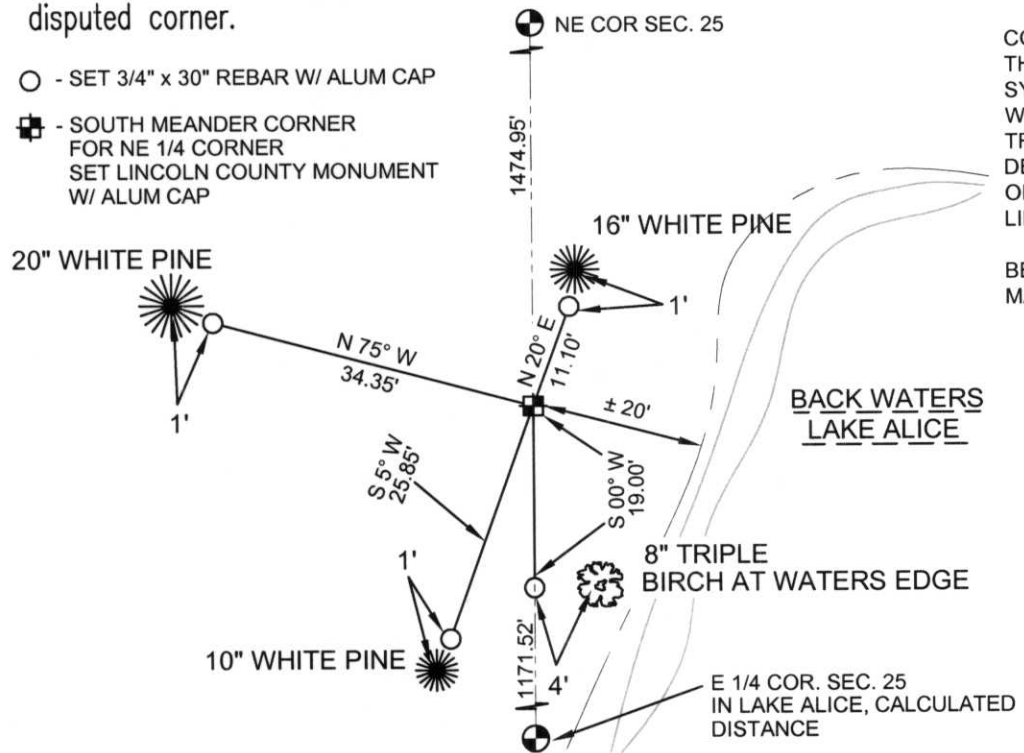
(b)(f)(g)(h) Description of monument found at this corner and if it was accepted, state all evidence (material, testimonial, occupational, plats, records, other monuments) used as a basis for accepting. If not accepted or if nothing was found, state evidence used as basis for establishing location. If reestablished through lost corner proportionate methods, indicate all monuments, distances and directions used to establish.

A STRAIGHT LINE HAS BEEN HELD FROM THE EAST 1/4 CORNER OF SECTION 36 TO THE NORTHEAST CORNER OF SECTION 25 IN PAST SURVEYS. IN SEARCH OF EVIDENCE TO VERIFY THE CORNER LOCATION OF THE EAST 1/4 CORNER OF SECTION 25, WE FOUND NO EVIDENCE DUE TO THE FACT THE EAST 1/4 CORNER FALLS IN LAKE ALICE. THIS MEANDER CORNER WAS SET ON A STRAIGHT LINE BETWEEN THE EAST 1/4 CORNER OF SECTION 36 AND THE NORTHEAST CORNER OF SECTION 25.

SET LINCOLN COUNTY MONUMENT AND TIED OUT CORNER.

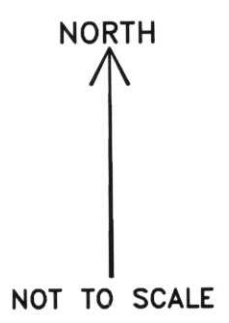
RECEIVED AT LINCOLN COUNTY
COURTHOUSE THIS 30TH DAY
OF January 20 02
Tom Dabner
LAND INFORMATION OFFICE

(c)(d)(e) Plan view of corner with ties to at least 4 witness monuments. If in disagreement with previously established corner, show the distances between the two corners and also indicate the ties to the disputed corner.



COORDINATES ARE REFERENCED TO THE LINCOLN COUNTY COORDINATE SYSTEM AS DEVELOPED BY THE WISCONSIN DEPARTMENT OF TRANSPORTATION AND WERE DETERMINED BY GPS OBSERVATIONS ON CONTROL POINTS AS SUPPLIED BY LINCOLN COUNTY.

BEARINGS ARE REFERENCED TO MAGNETIC NORTH.



(i) I, Thomas A. Radenz, RLS certify that the corner location on this record was determined by me or under my direction and control and that this U.S. Public Land Survey Monument Record is correct and complete to the best of my knowledge and belief.

Thomas A. Radenz Signature
1/31/02 Date



Index No.
P5-25