

U.S. PUBLIC LAND SURVEY MONUMENT RECORD

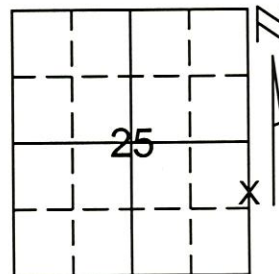
Note: This form is intended and designed to fulfill all requirements of Wisconsin Administrative Code, Chapter A-E 5.02, U.S. Public Land Survey Monument Record (3)(a)(b)(c)(d)(e)(f)(g)(h)(i). An additional sheet may be added if necessary to conform with said requirements.

(a) Corner location: Township 35 North

Range 6 East

Town/City/Village BRADLEY

County LINCOLN



Section 25

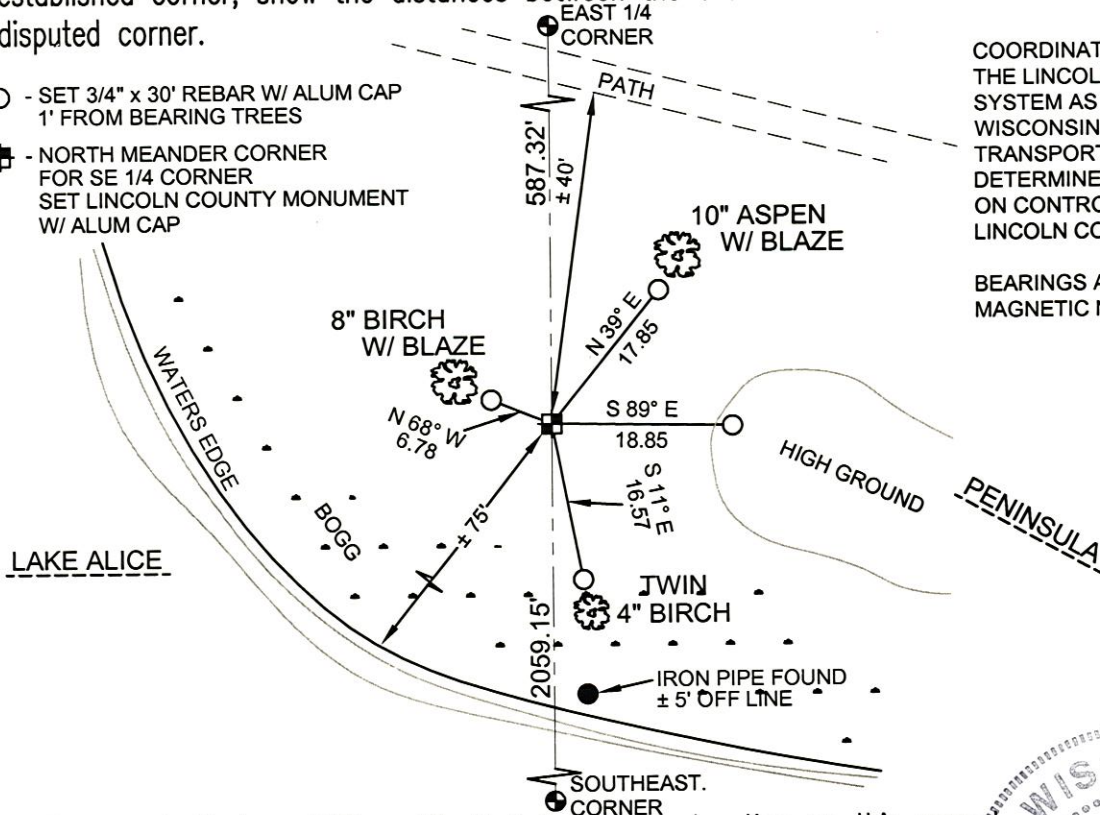
(b)(f)(g)(h) Description of monument found at this corner and if it was accepted, state all evidence (material, testimonial, occupational, plats, records, other monuments) used as a basis for accepting. If not accepted or if nothing was found, state evidence used as basis for establishing location. If reestablished through lost corner proportionate methods, indicate all monuments, distances and directions used to establish.

PAST SURVEYS WERE HELD AS THE BEST EVIDENCE IN ESTABLISHING THE SOUTHEAST CORNER OF SECTION 25. A STRAIGHT LINE WAS PROJECTED BETWEEN THE NORTHEAST CORNER OF SECTION 25 AND THE EAST 1/4 CORNER OF SECTION 36. THIS MEANDER CORNER WAS THEN SET ON LINE BETWEEN THE CALCULATED EAST 1/4 CORNER OF SECTION 25 AND THE CALCULATED SOUTHEAST CORNER OF SECTION 25.
SET LINCOLN COUNTY MONUMENT AND TIED OUT CORNER.

RECEIVED AT LINCOLN COUNTY
COURTHOUSE THIS 21ST DAY
OF December 20 01
Tony Dallen
LAND INFORMATION OFFICE

(c)(d)(e) Plan view of corner with ties to at least 4 witness monuments. If in disagreement with previously established corner, show the distances between the two corners and also indicate the ties to the disputed corner.

- - SET 3/4" x 30' REBAR W/ ALUM CAP 1' FROM BEARING TREES
- ⊕ - NORTH MEANDER CORNER FOR SE 1/4 CORNER SET LINCOLN COUNTY MONUMENT W/ ALUM CAP



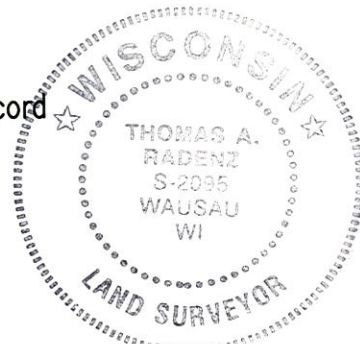
COORDINATES ARE REFERENCED TO THE LINCOLN COUNTY COORDINATE SYSTEM AS DEVELOPED BY THE WISCONSIN DEPARTMENT OF TRANSPORTATION AND WERE DETERMINED BY GPS OBSERVATIONS ON CONTROL POINTS AS SUPPLIED BY LINCOLN COUNTY.

BEARINGS ARE REFERENCED TO MAGNETIC NORTH.

NORTH
↑
NOT TO SCALE

(i) I, Thomas A. Radenz, RLS certify that the corner location on this record was determined by me or under my direction and control and that this U.S. Public Land Survey Monument Record is correct and complete to the best of my knowledge and belief.

Thomas A. Radenz
Signature
12/21/01
Date



Index No. 75-25