

U.S. PUBLIC LAND SURVEY MONUMENT RECORD

NOTE: This form is intended and designed to fulfill all requirements of Wisconsin Administrative Code, Chapter A-E 7.08 U.S. Public Land Survey Monument Record. An additional sheet may be added if necessary to conform with said requirements.

CORNER LOCATION

Meander Corner common to Sections 25 and 36
Township 35 North, Range 6 East of the 4th P.M.
Town of Bradley, Lincoln County, Wisconsin

6	5	4	3	2	1
7	8	9	10	11	12
18	17	16	15	14	13
19	20	21	22	23	24
30	29	28	27	26	25
31	32	33	34	35	36

T35N - R6E

HISTORY OF ORIGINAL CORNER ESTABLISHMENT

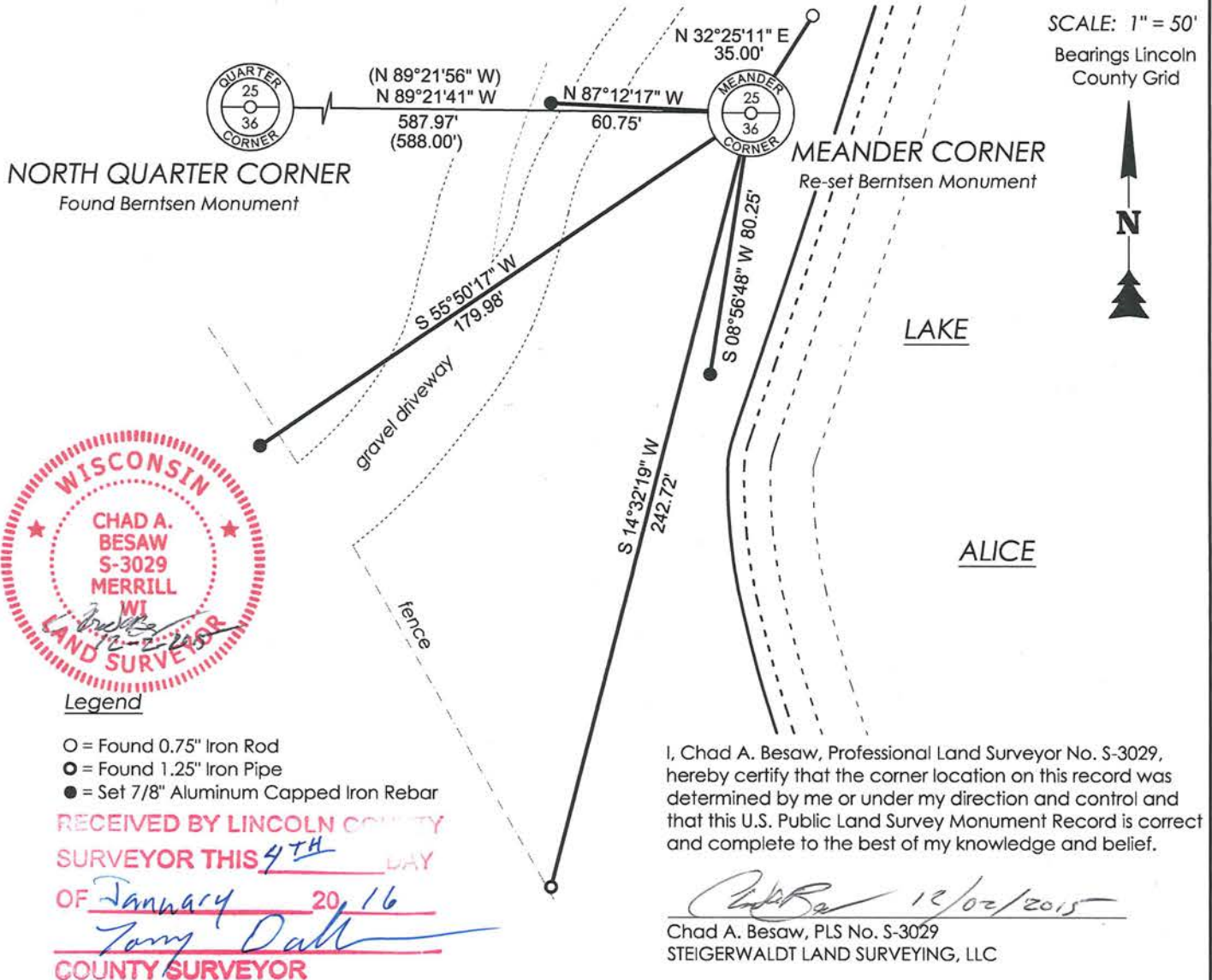
ORIGINAL SURVEYOR: Millard, Alfred
DATE OF SURVEY: Commenced Oct. 1860, Finished July 1861
ORIGINAL ACCESSORIES: No meander corner was set as Lake Alice was not yet impounded.

DESCRIPTION OF MONUMENT FOUND AT THIS CORNER AND IF IT WAS ACCEPTED, STATE ALL EVIDENCE (MATERIAL, TESTIMONIAL, OCCUPATIONAL, PLATS, RECORDS, OTHER MONUMENTS) USED AS A BASIS FOR ACCEPTING. IF NOT ACCEPTED OR IF NOTHING WAS FOUND, STATE EVIDENCE USED AS BASIS FOR ESTABLISHING LOCATION. IF RE-ESTABLISHED THROUGH LOST CORNER PROPORTIONATE METHODS, INDICATE ALL MONUMENTS, DISTANCES AND DIRECTIONS USED TO ESTABLISH. INDICATE TYPE OF MONUMENT AND SIGN POST FOUND OR SET.

Dec. 2001 - Thomas A. Radenz sets and ties out a Berntsen Monument, and reports: "In establishing the Southeast corner of Section 25 past surveys were held as best evidence, a straight line was projected between the Northeast corner of Section 25 and the East Quarter corner of Section 36. This Meander Corner was then set on a line between the South Quarter corner of Section 25 and the calculated Southeast corner of Section 25."

Nov. 2015 - I found no evidence of the Berntsen Monument or the ties due to recent earthwork on the Kings Dam berm/wing wall. I reset a Berntsen Monument flush at the coordinates provided on the previous Section Summary by Thomas Radenz, December 2001. I confirmed it was perpetuated correctly by comparing the given coordinates to computations using a combination of field GPS measurements and county data. I computed a position for the Southeast corner of Section 25 (falls in Lake Alice) by single proportionate measure, using the Northeast corner of Section 25 and the East Quarter corner of Section 36. When projecting a line from the South Quarter of Section 25 to the computed Southeast corner of Section 25, I found the previous position to be on line and accepted the previous coordinate values as the correct corner position. Berntsen Monument was tied out as shown below:

PLAN VIEW OF CORNER WITH TIES TO AT LEAST 4 WITNESS MONUMENTS. IF IN DISAGREEMENT WITH PREVIOUSLY ESTABLISHED CORNER, SHOW THE DISTANCES BETWEEN THE TWO CORNERS AND ALSO INDICATE THE TIES TO THE DISPUTED.



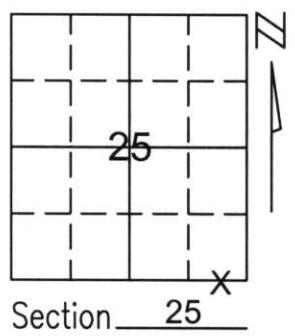
U.S. PUBLIC LAND SURVEY MONUMENT RECORD

Note: This form is intended and designed to fulfill all requirements of Wisconsin Administrative Code, Chapter A-E 5.02, U.S. Public Land Survey Monument Record (3)(a)(b)(c)(d)(e)(f)(g)(h)(i). An additional sheet may be added if necessary to conform with said requirements.

(a) Corner location: Township 35 North
Range 6 East

Town/City/Village BRADLEY

County LINCOLN



Section 25

(b)(f)(g)(h) Description of monument found at this corner and if it was accepted, state all evidence (material, testimonial, occupational, plats, records, other monuments) used as a basis for accepting. If not accepted or if nothing was found, state evidence used as basis for establishing location. If reestablished through lost corner proportionate methods, indicate all monuments, distances and directions used to establish.

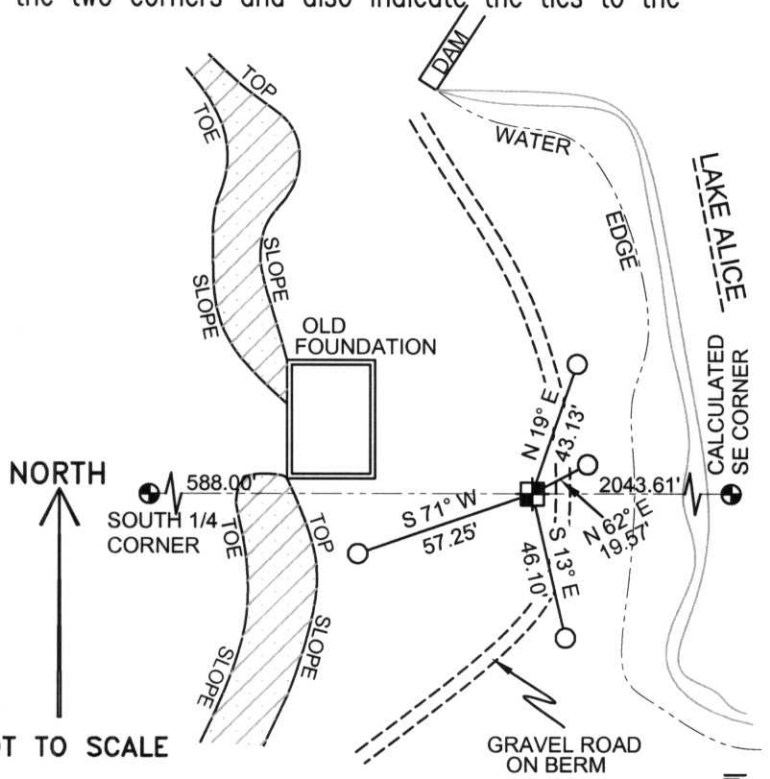
IN ESTABLISHING THE SOUTHEAST CORNER OF SECTION 25. PAST SURVEYS WERE HELD AS BEST EVIDENCE, A STRAIGHT LINE WAS PROJECTED BETWEEN THE NORTHEAST CORNER OF SECTION 25 AND THE EAST 1/4 CORNER OF SECTION 36. THIS MEANDER CORNER WAS THEN SET ON A LINE BETWEEN THE SOUTH 1/4 CORNER OF SECTION 25 AND THE CALCULATED SOUTHEAST CORNER OF SECTION 25.

RECEIVED AT LINCOLN COUNTY
COURTHOUSE THIS 21ST DAY
OF December 20 01
Tony Dallen
LAND INFORMATION OFFICE

(c)(d)(e) Plan view of corner with ties to at least 4 witness monuments. If in disagreement with previously established corner, show the distances between the two corners and also indicate the ties to the disputed corner.

COORDINATES ARE REFERENCED TO THE LINCOLN COUNTY COORDINATE SYSTEM AS DEVELOPED BY THE WISCONSIN DEPARTMENT OF TRANSPORTATION AND WERE DETERMINED BY GPS OBSERVATIONS ON CONTROL POINTS AS SUPPLIED BY LINCOLN COUNTY.

BEARINGS ARE REFERENCED TO MAGNETIC NORTH.



- - SET 3/4" x 30" REBAR W/ ALUM CAP
- ⊕ - WEST MEANDER CORNER FOR SE 1/4 CORNER SET LINCOLN COUNTY MONUMENT W/ ALUM CAP

NOT TO SCALE

(i) I, Thomas A. Radenz, RLS certify that the corner location on this record was determined by me or under my direction and control and that this U.S. Public Land Survey Monument Record is correct and complete to the best of my knowledge and belief.

Thomas A. Radenz
Signature
12/21/01
Date



Index No. U-2425