

U.S. PUBLIC LAND SURVEY MONUMENT RECORD

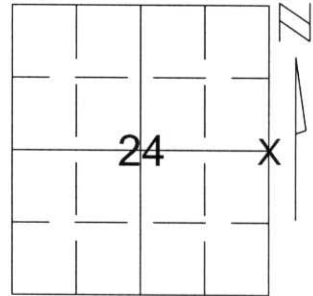
Note: This form is intended and designed to fulfill all requirements of Wisconsin Administrative Code, Chapter A-E 5.02, U.S. Public Land Survey Monument Record (3)(a)(b)(c)(d)(e)(f)(g)(h)(i). An additional sheet may be added if necessary to conform with said requirements.

(a) Corner location: Township 35 North

Range 6 East

Town/City/Village BRADLEY

County LINCOLN



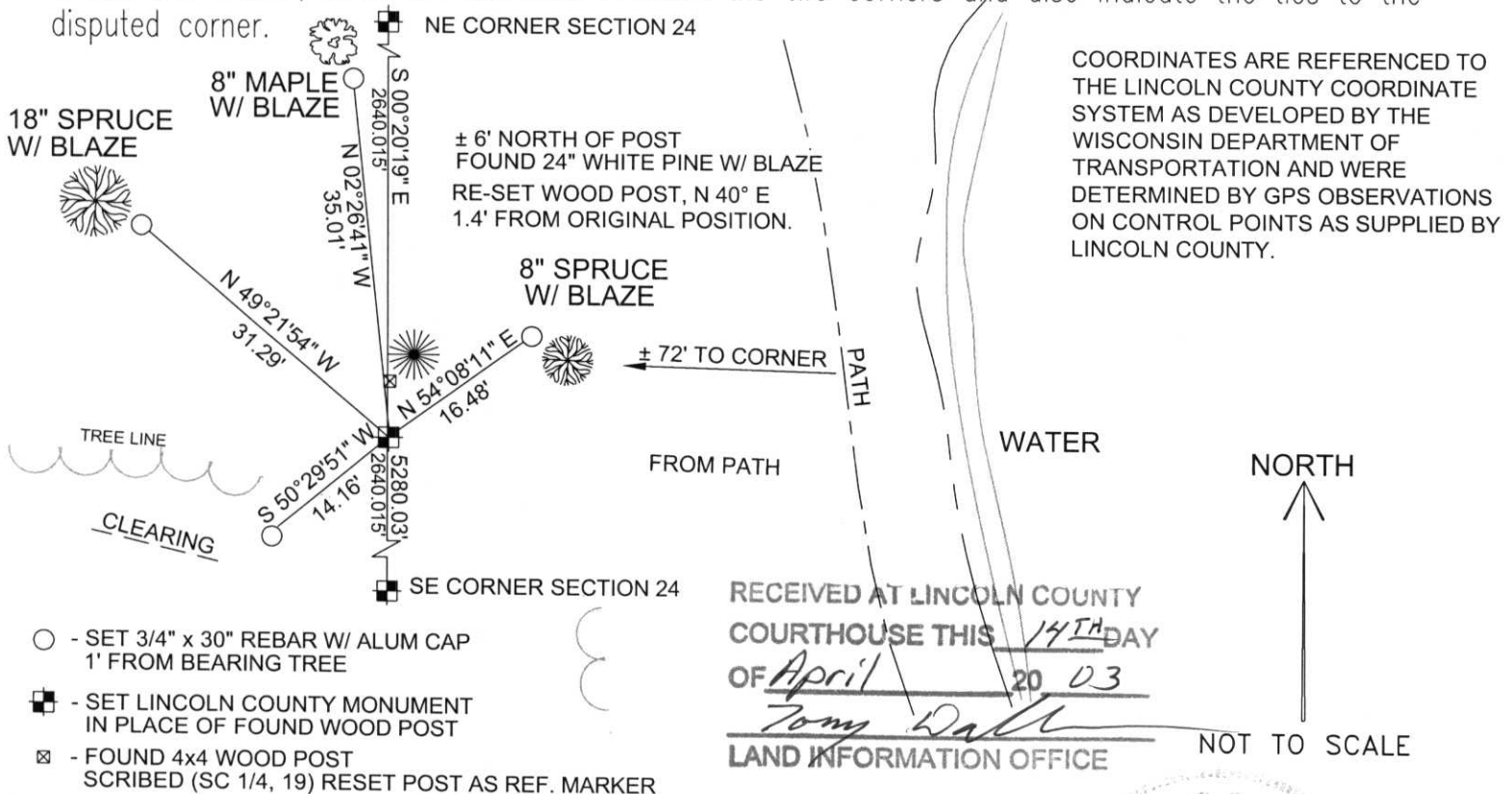
Section 24

(b)(f)(g)(h) Description of monument found at this corner and if it was accepted, state all evidence (material, testimonial, occupational, plats, records, other monuments) used as a basis for accepting. If not accepted or if nothing was found, state evidence used as basis for establishing location. If reestablished through lost corner proportionate methods, indicate all monuments, distances and directions used to establish.

We found an O & I Wood Post set online between the Northeast and Southeast corners of the Section. The Wood Post is located 2624.50 feet south of the Northeast corner of the Section. REI located field notes from an O & I survey dated 12-16-68 depicting a Wood Post set Proportionate between the Northeast and Southeast corners. This would set the Post at 2640.02. The O & I field notes state the measurement at 40.15 chains (2649.90). Although we found the Wood Post online at a different location than measured, we feel that the O & I surveyors intended to set the Post at the direct split. The direct split location can be reinforced by the location of a fenceline at the north 1/8 corner where an O & I Wood Post was also set. The O & I survey map dated 3/6/87 incorrectly depicts the measurement from the Northeast to the Southeast. The map depicts the chainage at 80.26. The field notes depict 40.15 for the North 1/2.

This tie sheet replaces the previously recorded tie sheet prepared by REI.

(c)(d)(e) Plan view of corner with ties to at least 4 witness monuments. If in disagreement with previously established corner, show the distances between the two corners and also indicate the ties to the disputed corner.



(i) I, Thomas A. Radenz, RLS certify that the corner location on this record was determined by me or under my direction and control and that this U.S. Public Land Survey Monument Record is correct and complete to the best of my knowledge and belief.

Signature Tom A. Radenz Date 4/11/03



Index No. 0-25

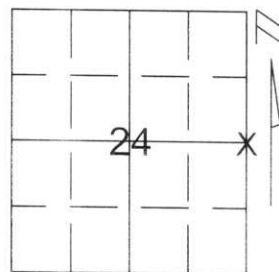
U.S. PUBLIC LAND SURVEY MONUMENT RECORD

Note: This form is intended and designed to fulfill all requirements of Wisconsin Administrative Code, Chapter A-E 5.02, U.S. Public Land Survey Monument Record (3)(a)(b)(c)(d)(e)(f)(g)(h)(i). An additional sheet may be added if necessary to conform with said requirements.

(a) Corner location: Township 35 North
Range 6 East

Town/City/Village BRADLEY

County LINCOLN



Section 24

(b)(f)(g)(h) Description of monument found at this corner and if it was accepted, state all evidence (material, testimonial, occupational, plats, records, other monuments) used as a basis for accepting. If not accepted or if nothing was found, state evidence used as basis for establishing location. If reestablished through lost corner proportionate methods, indicate all monuments, distances and directions used to establish.

WE FOUND A 4" x 4" WOOD POST MARKED (SC 1/4, 19). RESET LINCOLN COUNTY MONUMENT IN ITS PLACE. RESET WOOD POST, N 40° E, 1.4' FROM MONUMENT. HELD POST AS BEST EVIDENCE OF EAST 1/4 CORNER OF SECTION 24. ALSO FOUND WERE LARGE TREES WITH BLAZE MARKS REFERENCING WOOD POST.

RECEIVED AT LINCOLN COUNTY
COURTHOUSE THIS 21ST DAY
OF December 20 01
Tony Dabbs
LAND INFORMATION OFFICE

(c)(d)(e) Plan view of corner with ties to at least 4 witness monuments. If in disagreement with previously established corner, show the distances between the two corners and also indicate the ties to the disputed corner.



- - SET 3/4" x 30" REBAR W/ ALUM CAP 1' FROM BEARING TREE
- - SET LINCOLN COUNTY MONUMENT IN PLACE OF FOUND WOOD POST
- ⊠ - FOUND 4x4 WOOD POST SCRIBED (SC 1/4, 19) RESET POST AS REF. MARKER

(i) I, Thomas A. Radenz, RLS certify that the corner location on this record was determined by me or under my direction and control and that this U.S. Public Land Survey Monument Record is correct and complete to the best of my knowledge and belief.

Thomas A. Radenz Signature
12/18/01 Date



Index No. 0-25