

U.S. PUBLIC LAND SURVEY MONUMENT RECORD

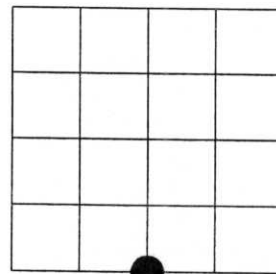
NOTE: This form is intended and designed to fulfill all requirements of Wisconsin Administrative Code, Chapter A-E 7.08 U.S. Public Land Survey Monument Record (3)(a)(b)(c)(d)(e)(f)(g)(h)(i). An additional sheet may be added if necessary to conform with said requirements.

(a) Corner location: Township 35 North

Range 6 East

Town of Bradley

Lincoln County, Wisconsin



Section 24

(b)(f)(g)(h) Description of monument found at this corner and if it was accepted, state all evidence (material, testimonial, occupational, plats, records, other monuments) used as a basis for accepting. If not accepted or if nothing was found, state evidence used as basis for establishing location. If reestablished through lost corner proportionate methods, indicate all monuments, distances and directions used to establish. Indicate type of monument found or set and sign post.

1860 - ORIGINAL CORNER SET BY ALFRED MILLARD

NOV 1971- CORNER FOUND BY WM. SCHERER INDEX *Q-23 FROM SURVEY BY NORTHWOODS SURVEYORS

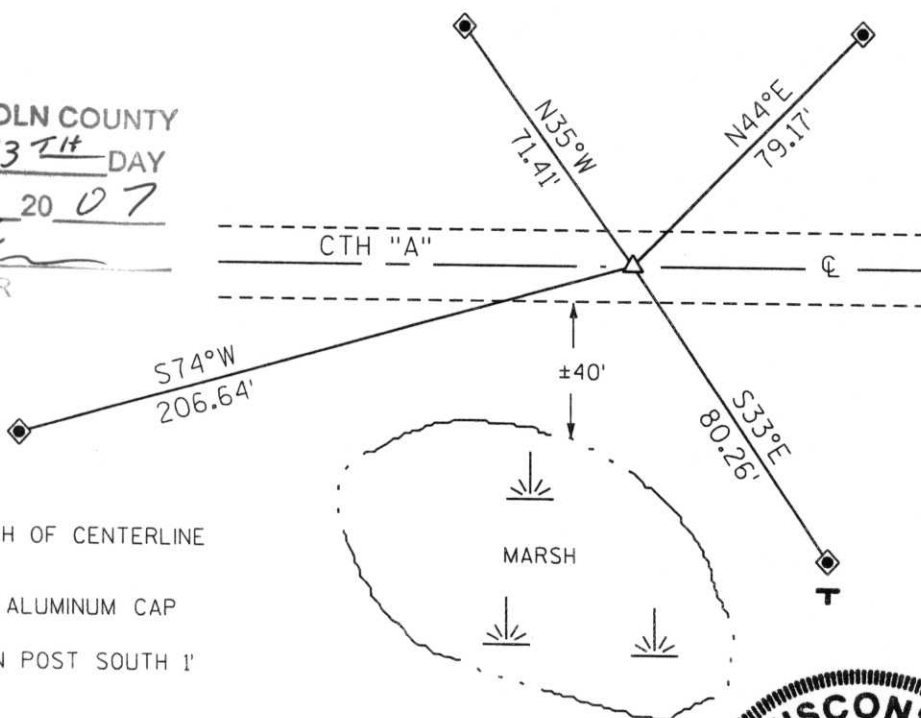
SEPT 1993 - LESTER J. SCHMIT SET PK NAIL (TIMBERLAND SURVEYORS) SHOWN ON SURVEY FOR IRENE STONEBERG, DRAWING #1034

FEB 2007 - EVIDENCE FOUND, STUMP OF 12" TRIPLE OAK FROM WM. SCHERER NOV 1971 CORNER CERTIFICATE INDEX *Q-23. RE-ESTABLISHED CORNER FROM SURVEY DONE BY TIMBERLAND SURVEYORS IN SEPT 1993 DRAWING #1034. SET PK NAIL AND WITNESSED AS SHOWN BELOW.

(c)(d)(e) Plan view of corner with ties to at least 4 witness monuments. If in disagreement with previously established corner, show the distances between the two corners and also indicate the ties to the disputed corner.



RECEIVED BY LINCOLN COUNTY
SURVEYOR THIS 13TH DAY
OF December 20 07
Tomy Duff
COUNTY SURVEYOR



- △ SET PK NAIL ±1' NORTH OF CENTERLINE
- ◆ SET 1" DIA. ROD WITH ALUMINUM CAP
- T SET PLASTIC "T" SIGN POST SOUTH 1' OF WITNESS CORNER

(i) I, Jeffery L. DeMuth, Registered Land Surveyor #S-2656, hereby certify that the corner location on this record was determined by me or under my direction and control and that this U.S. Public Land Survey Monument Record is correct and complete to the best of my knowledge and belief.

Jeffery L. DeMuth
Signature _____ Date 12/07/2007



Index No.

Q-23

106

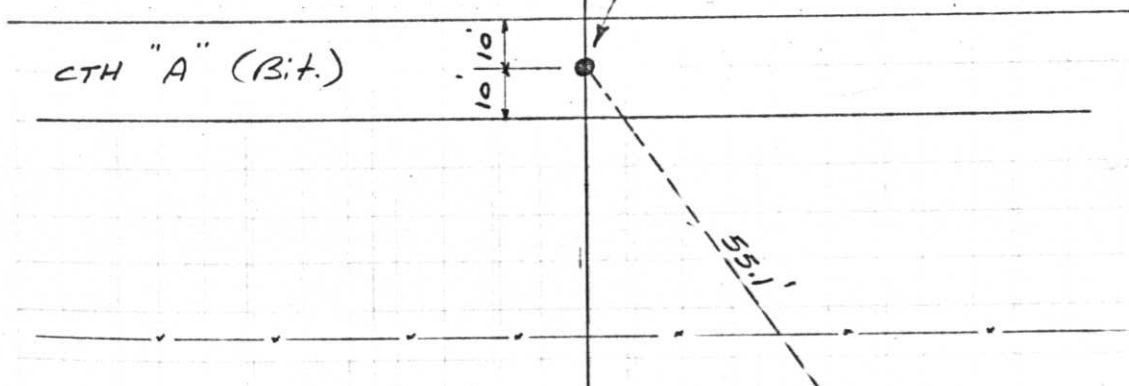
Project I.D. 1173-3-00 C.T.H. "S"
U.S.H. 8 U.S.H. 51 Freeway Lincoln
Co. Wm. Scherer Surveyor Received
from Division of Hwy's Jan. 11, 1973

25.
Q-23

T35N

R6E

Nov. 5, 1971



N 606, 482.21
E 2,081, 474.88
N. 1/4 Cor. Sec. 25-35-6E
R.R. Spike in Bit. surface.
Found by Manninghoff & Scherer
11/5/71

Note: Corner found by using survey
plat furnished by NORTHWOODS
SURVEYORS.

B.T.
12" Triple Oak
52° E, 55.0
Scribed 1/4 S.