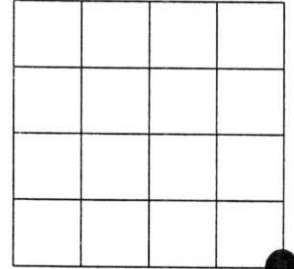


U.S. PUBLIC LAND SURVEY MONUMENT RECORD

NOTE: This form is intended and designed to fulfill all requirements of Wisconsin Administrative Code, Chapter A-E 7.08 U.S. Public Land Survey Monument Record (3)(a)(b)(c)(d)(e)(f)(g)(h)(i). An additional sheet may be added if necessary to conform with said requirements.

(a) Corner location: Township 35 North
 Range 6 East
 Town of Bradley
 Lincoln County, Wisconsin



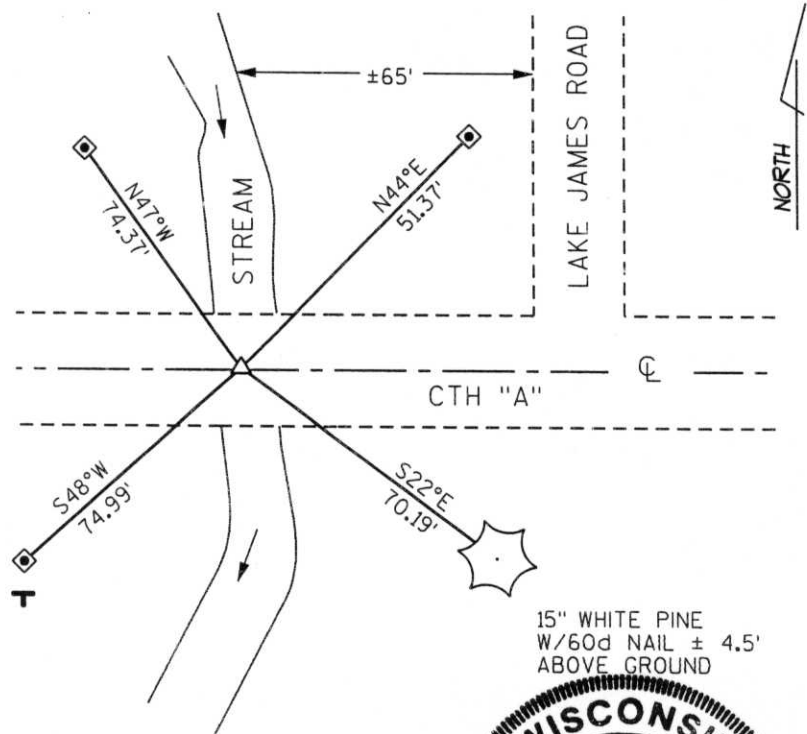
Section 24

(b)(f)(g)(h) Description of monument found at this corner and if it was accepted, state all evidence (material, testimonial, occupational, plats, records, other monuments) used as a basis for accepting. If not accepted or if nothing was found, state evidence used as basis for establishing location. If reestablished through lost corner proportionate methods, indicate all monuments, distances and directions used to establish. Indicate type of monument found or set and sign post.

- AUG 1860 - ORIGINAL CORNER SET BY ALFRED MILLARD
- OCT 1985 - LESTER J. SCHMIT ESTABLISHED CORNER. INDEX # Q-25
- SEPT 1993 - PK NAIL SET BY LESTER J. SCHMIT (TIMBERLAND SURVEYORS) IN SURVEY FOR IRENE STONEBERG DRAWING #1034
- OCT 2005 - DENNIS ROBERTS REFERENCES CORNER ON PLAT OF SURVEY FOR GRAHAM FOSTER
- FEB 2007 - I FOUND NO EVIDENCE OF PK NAIL SET BY LESTER J. SCHMIT SEPT 1993. FOUND 15" WHITE PINE S22°E ON CORNER CERTIFICATE INDEX #Q-25 FROM OCT 1985. RE-ESTABLISHED CORNER LOCATION FROM EVIDENCE AND SURVEY DONE BY TIMBERLAND SURVEYORS IN SEPT 1993 DRAWING #1034, SET PK NAIL AND WITNESSED AS SHOWN BELOW.

(c)(d)(e) Plan view of corner with ties to at least 4 witness monuments. If in disagreement with previously established corner, show the distances between the two corners and also indicate the ties to the disputed corner.

RECEIVED BY LINCOLN COUNTY
 SURVEYOR THIS 13TH DAY
 OF December 20 07
Tom Ball
 COUNTY SURVEYOR



- △ SET PK NAIL ±1' NORTH OF CENTERLINE
- ◇ SET 1" DIA. ROD WITH ALUMINUM CAP
- ⊥ SET PLASTIC "T" SIGN POST SOUTH 1' OF WITNESS CORNER

15" WHITE PINE
 W/60d NAIL ± 4.5'
 ABOVE GROUND



(i) I, Jeffery L DeMuth, Registered Land Surveyor #S-2656, hereby certify that the corner location on this record was determined by me or under my direction and control and that this U.S. Public Land Survey Monument Record is correct and complete to the best of my knowledge and belief.

Jeffery L. DeMuth
 Signature _____ Date 12/07/2007

Index No.

Q-25

U.S. PUBLIC LAND SURVEY MONUMENT RECORD

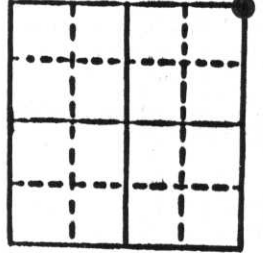
Note: This form is intended and designed to fulfill all requirements of Wisconsin Administrative Code, Chapter A-E 5.02, U.S. Public Land Survey Monument Record (3) (a) (b) (c) (d) (e) (f) (g) (h) (i). An additional sheet may be added if necessary to conform with said requirements.

(a) Corner location: Township 35 North

Range 6 East

Town Bradley

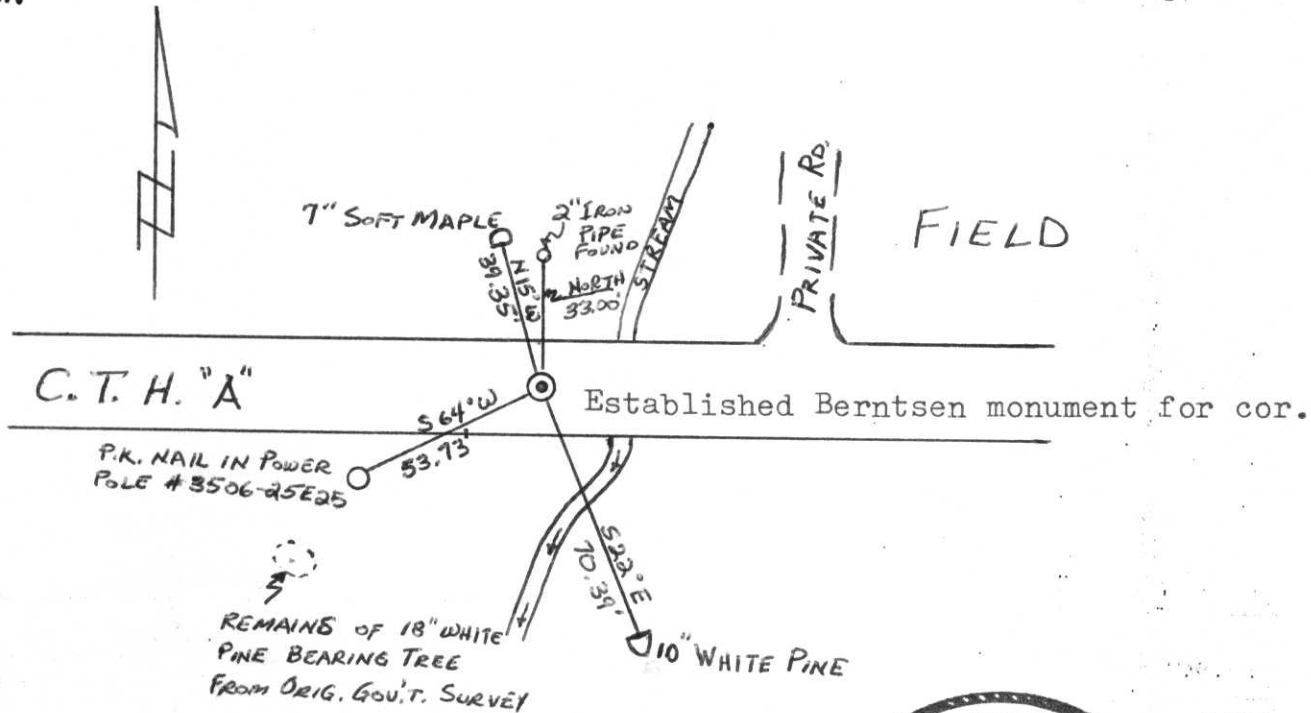
County Lincoln



Section 25

b) (f) (g) (h) Description of monument found at this corner and if it was accepted, state all evidence (material, testimonial, occupational, plats, records, other monuments) used as a basis for accepting. If not accepted or if nothing was found, state evidence used as basis for establishing location. If reestablished through lost corner proportionate methods, indicate all monuments, distances and directions used to establish. Original Gov't. Survey: 27 Aug. 1860 by James Marsh, set wood post for corner with bearings, tamarac 10 N 14° E 81 links, yellow pine 16 S 34° E 59 links, white pine 18 S 54° W 119 links & spruce pine 6 N 67° W 89 links. I found no monument at the corner location, but found the remains of the stump of the original 18" white pine witness tree and also a 2" iron pipe North 33.00' as referenced by Northwoods Surveyors map dated May 1969.

c) (d) (e) Plan view of corner with ties to at least 4 witness monuments. If in disagreement with previously established corner, show the distances between the two corners and also indicate the ties to the disputed corner.



(i) I, Lester J. Schmit

(type or print name) certify that the corner location on this record was determined by me or under my direction and control and that this U.S. Public Land Survey Monument Record is correct and complete to the best of my knowledge and belief.

Lester J. Schmit
Signature

14 Oct 85
Date



Index No. 0-25