

# U S PUBLIC LAND SURVEY MONUMENT RECORD

NOTE: This form is intended and designed to fulfill all requirements of Wisconsin Administrative Code, Chapter A-E 7.08 U.S. Public Land Survey Monument Record (3) (a-i)

A-E 7.08(3)(a) Identity of corner:  
 SOUTH 1/4 CORNER SECTION 23,  
 TOWNSHIP 35 NORTH,  
 RANGE 06 EAST OF THE 4TH PM,  
 TOWN OF BRADLEY,  
 COUNTY OF LINCOLN

WISCRS - LINCOLN COUNTY  
 N: 237,693.577 USft (237,693.563)  
 E: 388,704.741 USft (388,704.737)  
 Datum: NAD83 (2011)  
 GNSS Method RTN - Direct  
 GNSS Control WISCORS VRS



The coordinate value shown has been verified by the average of two or more GPS observations at a markedly different time. Coordinates shown in parenthesis are provided by Lincoln County.

A-E 7.08(3)(b)

Original Surveyor: Alfred Millard

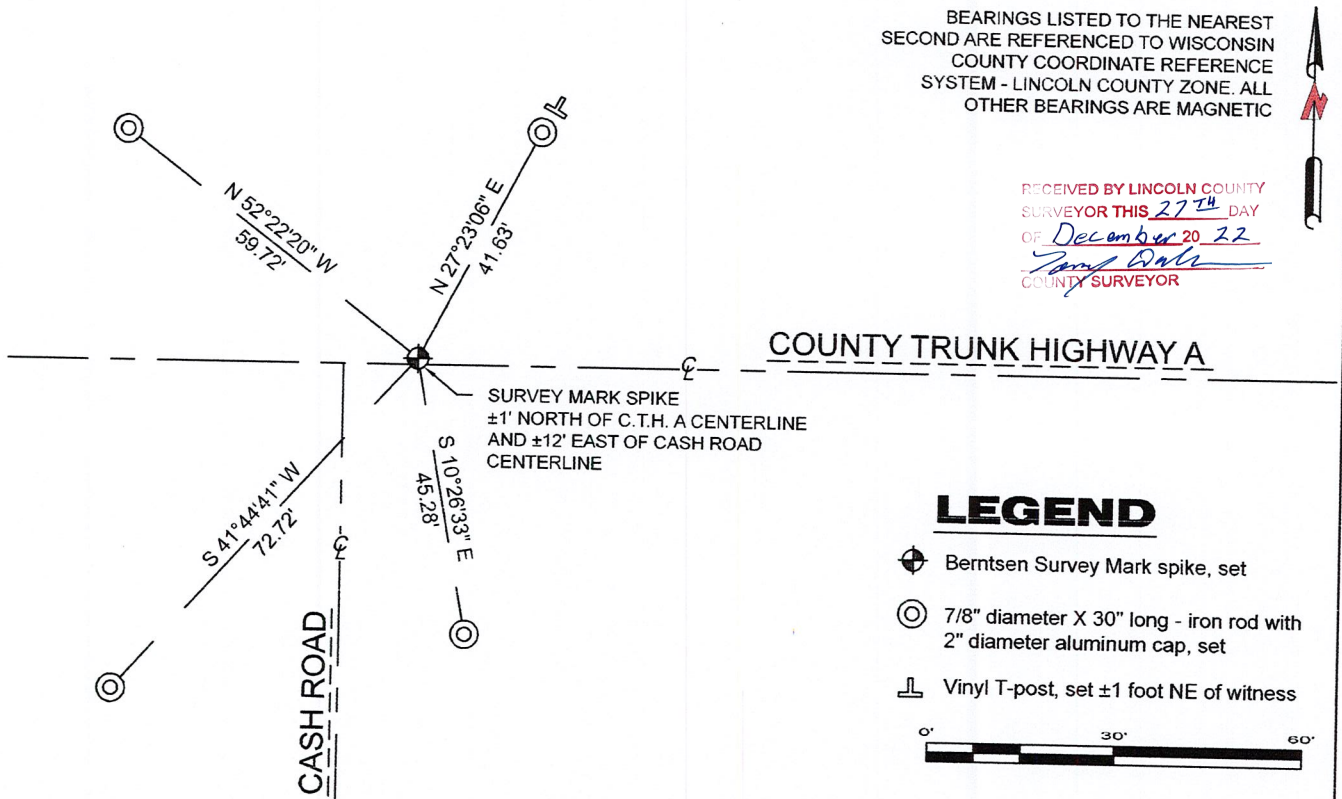
Date of Original Survey Commenced: October 18, 1860  
 Completed: July 21, 1861

Original Accessories:  
 Spruce Pine 10 N 65° W 29 Links  
 Tamarac 14 S 58° E 44 Links

July ??, 19?? - Surveyor 1192 - Lester J. Schmidt - indicate this position as "?????" on Lincoln County map M71B.  
 April 24, 1995 - Surveyor 1192 - Lester J. Schmidt - indicate this position as "Berntsen Monument set this survey" on Lincoln County map M408B.  
 May 13, 1997 - Surveyor 1192 - Lester J. Schmidt - indicate this position as "Berntsen Monument found in place" on Lincoln County map M431B.  
 November 20, 1998 - Surveyor - Jeffrey T. Brock - indicates this position as "nail in asphaltic surface over mon." on Lincoln County map L255A.  
 January 23, 2003 - Surveyor 1192 - Lester J. Schmidt - indicate this position as "P.K. nail found in place" on Lincoln County map M470B.  
 May 8, 2006 - Surveyor 1192 - Lester J. Schmidt - indicate this position as "Berntsen Monument found in place" on Lincoln County map M520B.  
 October 17, 2005 - Surveyor 2142 - David A. Renaud - indicates this position as "N: 237693.5640 E: 388704.7370" on Lincoln County map L403B and L404B.  
 November 26, 2012 - Surveyor 1845 - David L. Lemke - indicates this position as "PK nail" on Lincoln County map S432A.

September 27, 2022 - While performing the 2022 Lincoln County PLSS Corner Remonumentation and GPS Services project, I went to the coordinate position provided by Lincoln County, I made a careful search of the area and found no evidence of the corner or witnesses. The County provided location is ±1 foot south of County Trunk Highway A centerline and ±12 feet east of the Cash Road centerline. Under the direction of Lincoln County, I restored the corner using coordinates provided by Lincoln County and set a 3" long Berntsen Survey Mark steel spike, with a 1" diameter head. I established 4 new reference monuments as shown below.

A-E 7.08(3)(c)(d) Plan view of corner with references to at least 4 witness monuments.



A-E 7.08(3)(e) 1860 Surveyor set a post, 1977 - 2012 the position was occupied by a monument. I set a Berntsen Survey Mark steel spike.

A-E 7.08(3)(f) I restored the corner through ACCEPTANCE OF AN OBLITERATED LOCATION.

A-E 7.08(3)(g)(h) This corner was not determined through lost-corner-proportionate methods.

A-E 7.08(3)(i) I, Jeffrey L. DeMuth, Professional Land Surveyor No. S-2656, hereby certify that the corner location on this record was determined by the Lincoln County Surveyor, and the monuments found or set as shown hereon were measured by me or under my direction and control, and that this U.S. Public Land Survey Monument Record is correct and complete to the best of my knowledge, and belief.

SIGNATURE

December 14, 2022

DATE



61-0

## REPORT

### 2022-Lincoln County PLSS Corner Remonumentation and GPS Services

Wisconsin Corner Point Identification Number: 43506230020

Surveyor: Jeffrey L. DeMuth – S2656

Corner monument: Set Berntsen “Survey Mark” steel spike, 1” diameter head, 3” long at coordinates provided.

Field Book: Cardinal North – Lincoln Co. Remon. – 2022-00

Page: 30

Horizontal Datum: WisCRS – Lincoln County Zone – NAD83(2011)

Date / time of initial measurement:

September 27, 2022 - Start 10:23:29 CDT – End 10:32:38 CDT

Reference monuments:

4 – Set - 7/8” diameter X 30” long iron rods with 2” diameter Lincoln Co. aluminum cap.

#### Coordinate Table

	County Provided	2022 Measurement	Difference
North	237693.563	237693.577	-0.01
East	388704.737	388704.741	0.00

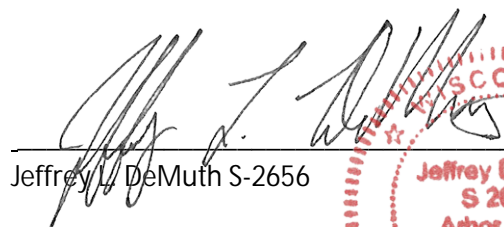

Established coordinates match existing calculated coordinates within reason.

Request Data Log for more information.

#### Additional Notes:

Corner falls  $\pm 1$  foot south of C.T.H. A centerline, and  $\pm 12$  feet east of Cash Road centerline.

Email from County Surveyor indicates that he had “found and accepted a PK Nail from Eagle Heights Subdivision”.

  
 Jeffrey L. DeMuth S-2656
 

October 7, 2022

Date



43506230020\_Mon-N





43506230020\_North





43506230020\_West





43506230020\_South





43506230020\_East

