

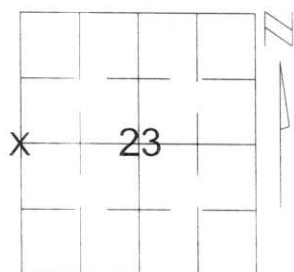
# U.S. PUBLIC LAND SURVEY MONUMENT RECORD

Note: This form is intended and designed to fulfill all requirements of Wisconsin Administrative Code, Chapter A-E 5.02, U.S. Public Land Survey Monument Record (3)(a)(b)(c)(d)(e)(f)(g)(h)(i). An additional sheet may be added if necessary to conform with said requirements.

(a) Corner location: Township 35 North  
Range 6 East

Town/City/Village BRADLEY

County LINCOLN



Section 23

(b)(f)(g)(h) Description of monument found at this corner and if it was accepted, state all evidence (material, testimonial, occupational, plats, records, other monuments) used as a basis for accepting. If not accepted or if nothing was found, state evidence used as basis for establishing location. If reestablished through lost corner proportionate methods, indicate all monuments, distances and directions used to establish.

AFTER A EXTENSIVE SEARCH WE FOUND NO EVIDENCE OF THE WEST 1/4 CORNER. WE SET THE CORNER BY SINGLE PROPORTION FROM THE NORTHWEST CORNER AND THE SOUTHWEST CORNER OF SECTION 23. WE SET A LINCOLN COUNTY MONUMENT AND TIED OUT THE MONUMENT TO PERPETUATE CONER LOCATION.

(c)(d)(e) Plan view of corner with ties to at least 4 witness monuments. If in disagreement with previously established corner, show the distances between the two corners and also indicate the ties to the disputed corner.

○ - SET 3/4" x 30" REBAR W/ ALUM CAP 1' FROM BEARING TREE

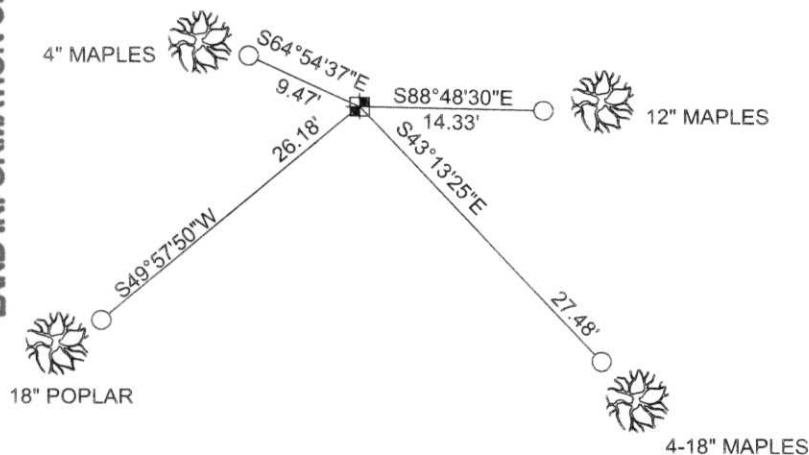
■ - WEST 1/4 SET LINCOLN COUNTY MONUMENT W/ ALUM CAP

N 240291.9477  
E 386068.4719

COORDINATES ARE REFERENCED TO THE LINCOLN COUNTY COORDINATE SYSTEM AS DEVELOPED BY THE WISCONSIN DEPARTMENT OF TRANSPORTATION AND WERE DETERMINED BY GPS OBSERVATIONS ON CONTROL POINTS AS SUPPLIED BY LINCOLN COUNTY.

BEARINGS ARE REFERENCED TO MAGNETIC NORTH.

RECEIVED AT LINCOLN COUNTY  
 COURTHOUSE THIS 11<sup>TH</sup> DAY  
OF April 20 02  
*Zony Dalton*  
 LAND INFORMATION OFFICE



NOT TO SCALE

(i) I, Nathan J. Wincentsen, RLS certify that the corner location on this record was determined by me or under my direction and control and that this U.S. Public Land Survey Monument Record is correct and complete to the best of my knowledge and belief.

*Nathan J Wincentsen* \_\_\_\_\_ 4-11-02  
Signature Date



Index No. 0-17