

U S PUBLIC LAND SURVEY MONUMENT RECORD

NOTE: This form is intended and designed to fulfill all requirements of Wisconsin Administrative Code, Chapter A-E 7.08 U.S. Public Land Survey Monument Record (3) (a-i)

A-E 7.08(3)(a) Identity of corner:
 SOUTHEAST CORNER SECTION 22,
 TOWNSHIP 35 NORTH,
 RANGE 06 EAST OF THE 4TH PM,
 TOWN OF BRADLEY,
 COUNTY OF LINCOLN

WISCORS - LINCOLN COUNTY
 N: 237,664.485 USft (237,664.417)
 E: 386,064.598 USft (386,064.700)
 Datum: NAD83 (2011)
 GNSS Method RTN - Direct
 GNSS Control WISCORS VRS



The coordinate value shown has been verified by the average of two or more GPS observations at a markedly different time. Coordinates shown in parenthesis are provided by Lincoln County.

A-E 7.08(3)(b)

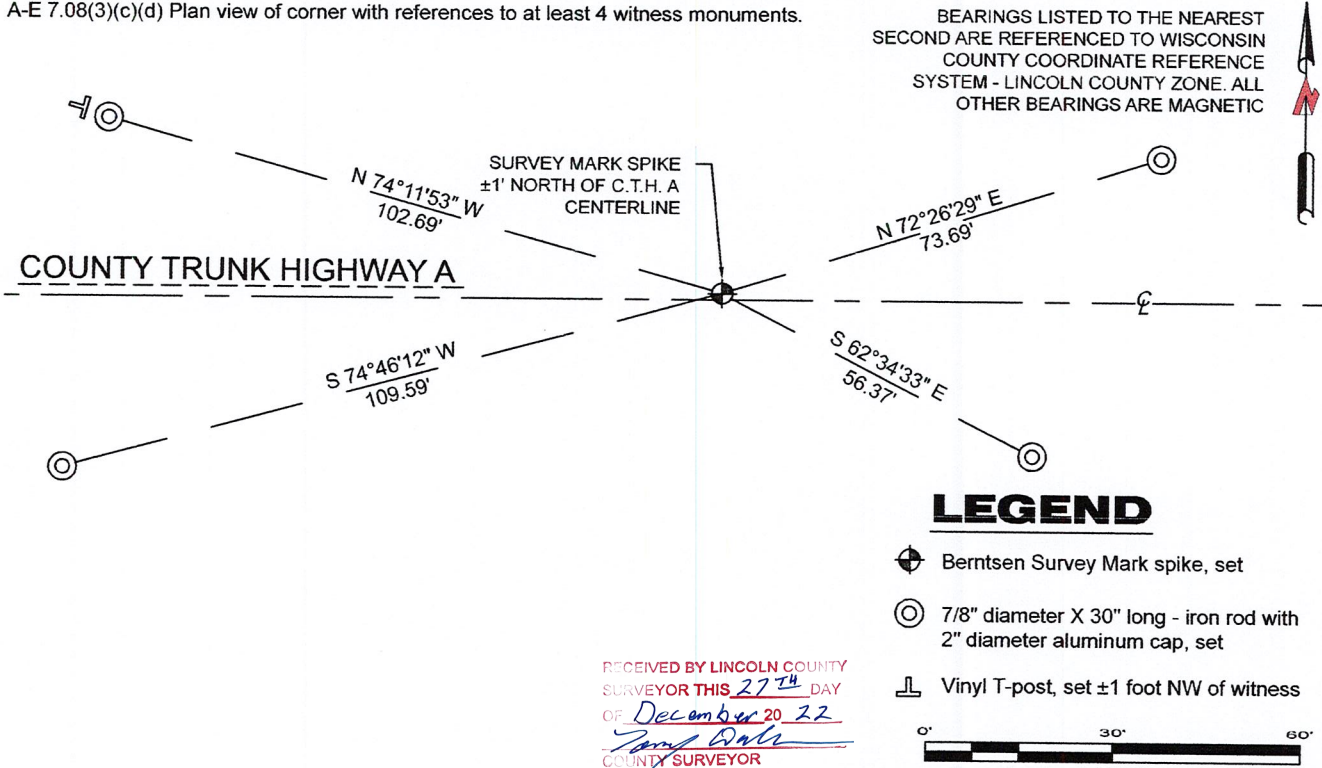
Original Surveyor: Alfred Millard

Date of Original Survey	Commenced:	October 18, 1860	Original Accessories:	
	Completed:	July 21, 1861	Tamarac	7 N 57 1/2° W 10 Links
			Cedar	5 S 25° W 12 Links
			Cedar	6 S 64° E 14 Links
			Cedar	5 N 30° E 7 Links

July ??, 19?? - Surveyor 1192 - Lester J. Schmidt - indicate this position as "?????" on Lincoln County map M71B.
 January 17, 1990 - Surveyor 1192 - Lester J. Schmidt - indicate this position as "Berntsen Monument to be set the spring of 1990" on Lincoln County map M255B and M264A.
 January 8, 1992 - Surveyor 1192 - Lester J. Schmidt - indicate this position as "Berntsen Monument to be set during the spring of 1992" on Lincoln County map L176B.
 October 17, 2005 - Surveyor 2142 - David A. Renaud - indicates this position as "N: 237664.4173 E: 386064.7005" on Lincoln County map L403B and L404B.
 November 26, 2012 - Surveyor 1845 - David L. Lemke - indicates this position as "PK nail" on Lincoln County map S432A.

September 27, 2022 - While performing the 2022 Lincoln County PLSS Corner Remonumentation and GPS Services project, I went to the coordinate position provided by Lincoln County, I made a careful search of the area and found no evidence of the corner or witnesses. The County provided location is ±1 foot north of County Trunk Highway A centerline. Under the direction of Lincoln County, I restored the corner using coordinates provided by Lincoln County and set a 3" long Berntsen Survey Mark steel spike, with a 1" diameter head. I established 4 new reference monuments as shown below.

A-E 7.08(3)(c)(d) Plan view of corner with references to at least 4 witness monuments.



A-E 7.08(3)(e) 1860 Surveyor set a post, 1990 - 2012 the position was occupied by a monument. I set a Berntsen Survey Mark steel spike.

A-E 7.08(3)(f) I restored the corner through ACCEPTANCE OF AN OBLITERATED LOCATION.

A-E 7.08(3)(g)(h) This corner was not determined through lost-corner-proportionate methods.

A-E 7.08(3)(i) I, Jeffrey L. DeMuth, Professional Land Surveyor No. S-2656, hereby certify that the corner location on this record was determined by the Lincoln County Surveyor, and the monuments found or set as shown hereon were measured by me or under my direction and control, and that this U.S. Public Land Survey Monument Record is correct and complete to the best of my knowledge, and belief.

Jeffrey L. DeMuth
 SIGNATURE
 December 14, 2022
 DATE



Q-17

REPORT

2022-Lincoln County PLSS Corner Remonumentation and GPS Services

Wisconsin Corner Point Identification Number: 43506220000

Surveyor: Jeffrey L. DeMuth – S2656

Corner monument: Set Berntsen "Survey Mark" steel spike, 1" diameter head, 3" long at coordinates provided.

Field Book: Cardinal North – Lincoln Co. Remon. – 2022-00

Page: 48

Horizontal Datum: WisCRS – Lincoln County Zone – NAD83(2011)

Date / time of initial measurement:

September 27, 2022 - Start 11:07:06 CDT – End 11:19:31 CDT

Reference monuments:

4 – Set - 7/8" diameter X 30" long iron rods with 2" diameter Lincoln Co. aluminum cap.

Coordinate Table

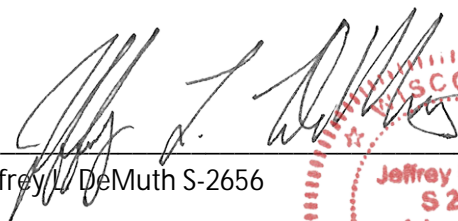

	County Provided	2022 Measurement	Difference
North	237664.417	237664.485	-0.07
East	386064.700	386064.598	0.10

Established coordinates match existing calculated coordinates within reason.

Request Data Log for more information.

Additional Notes:

Corner falls ± 1 foot north of C.T.H. A centerline.


 Jeffrey L. DeMuth S-2656
 
 October 7, 2022
 Date

43506220000_Mon-N



4350622000_North



43506220000_West



43506220000_South



43506220000_East

