

# U.S. PUBLIC LAND SURVEY MONUMENT RECORD

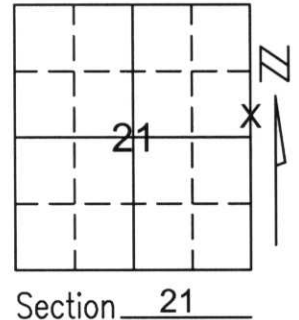
Note: This form is intended and designed to fulfill all requirements of Wisconsin Administrative Code, Chapter A-E 5.02, U.S. Public Land Survey Monument Record (3)(a)(b)(c)(d)(e)(f)(g)(h)(i). An additional sheet may be added if necessary to conform with said requirements.

(a) Corner location: Township 35 North

Range 6 East

Town/City/Village BRADLEY

County LINCOLN



Section 21

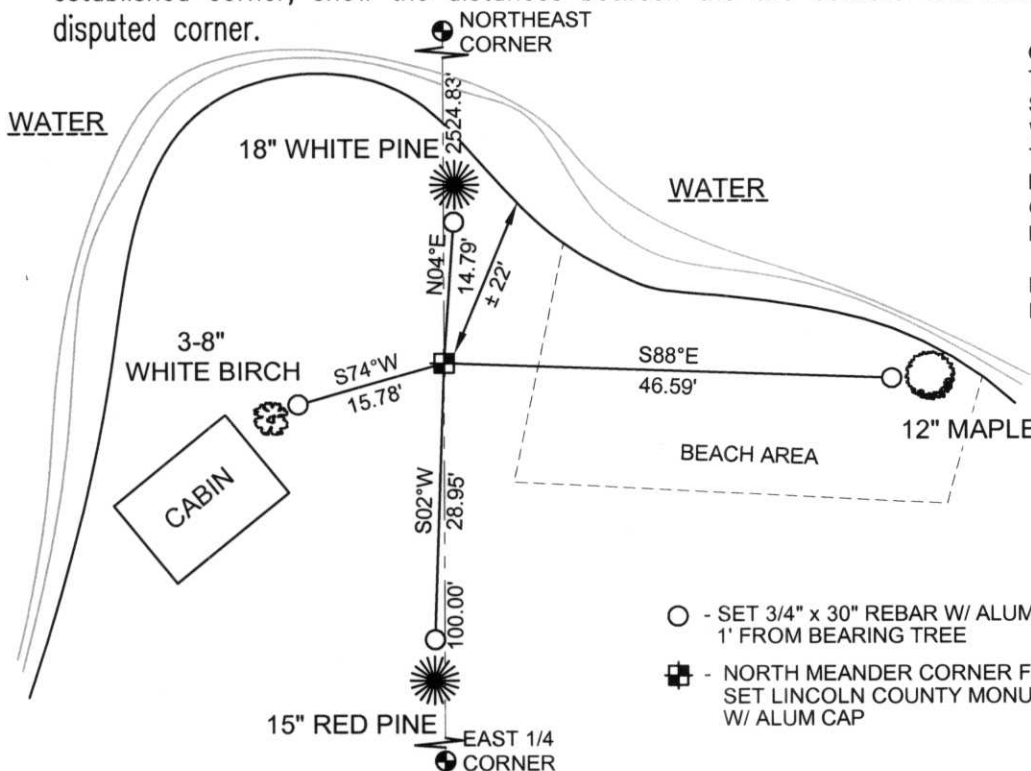
(b)(f)(g)(h) Description of monument found at this corner and if it was accepted, state all evidence (material, testimonial, occupational, plats, records, other monuments) used as a basis for accepting. If not accepted or if nothing was found, state evidence used as basis for establishing location. If reestablished through lost corner proportionate methods, indicate all monuments, distances and directions used to establish.

AFTER EXTENSIVE RESEARCH IN SECTIONS 15, 16, 21, AND 22, WE DECIDED TO HOLD SECTION SUMMARY (#L176) ON FILE AT LINCOLN COUNTY LAND INFORMATION OFFICE, PREPARED BY LESTER SCHMIDT. THIS IS THE BEST EVIDENCE OF THE LOCATION OF THE NORTHEAST AND EAST 1/4 CORNERS OF SECTION 21.

WE SET A LINCOLN COUNTY MONUMENT FOR SOUTH MEANDER CORNER ON LINE BETWEEN THE EAST 1/4 AND THE NORTHEAST CORNERS OF SECTION 21 AND TIED OUT.

RECEIVED AT LINCOLN COUNTY  
COURTHOUSE THIS 21<sup>ST</sup> DAY  
OF December 20 01  
Tony Walker  
LAND INFORMATION OFFICE

(c)(d)(e) Plan view of corner with ties to at least 4 witness monuments. If in disagreement with previously established corner, show the distances between the two corners and also indicate the ties to the disputed corner.



COORDINATES ARE REFERENCED TO THE LINCOLN COUNTY COORDINATE SYSTEM AS DEVELOPED BY THE WISCONSIN DEPARTMENT OF TRANSPORTATION AND WERE DETERMINED BY GPS OBSERVATIONS ON CONTROL POINTS AS SUPPLIED BY LINCOLN COUNTY.

BEARINGS ARE REFERENCED TO MAGNETIC NORTH.

NORTH

NOT TO SCALE

- - SET 3/4" x 30" REBAR W/ ALUM CAP 1' FROM BEARING TREE
- ⊕ - NORTH MEANDER CORNER FOR E 1/4 CORNER SET LINCOLN COUNTY MONUMENT W/ ALUM CAP

(i) I, Thomas A. Radenz, RLS certify that the corner location on this record was determined by me or under my direction and control and that this U.S. Public Land Survey Monument Record is correct and complete to the best of my knowledge and belief.



Index No. ND-13

Thomas A. Radenz  
Signature 12/21/01  
Date