

# U.S. PUBLIC LAND SURVEY MONUMENT RECORD

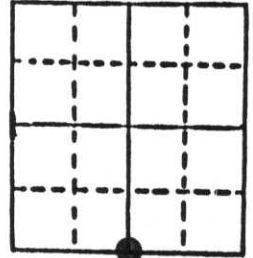
**Note:** This form is intended and designed to fulfill all requirements of Wisconsin Administrative Code, Chapter A-E 5.02, U.S. Public Land Survey Monument Record (3) (a) (b) (c) (d) (e) (f) (g) (h) (i). An additional sheet may be added if necessary to conform with said requirements.

(a) Corner location: Township 35 North

Range 6 East

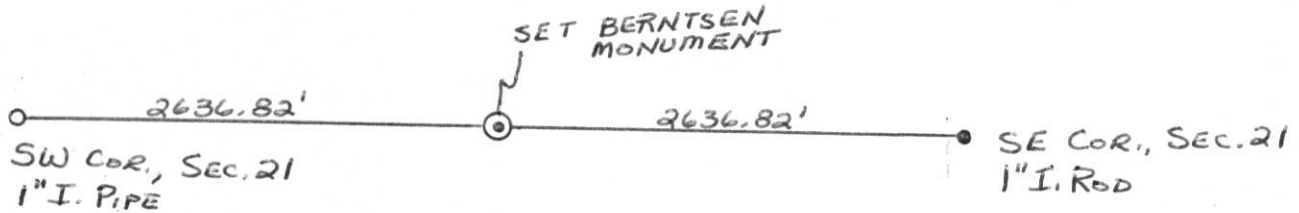
Town Bradley

County Lincoln

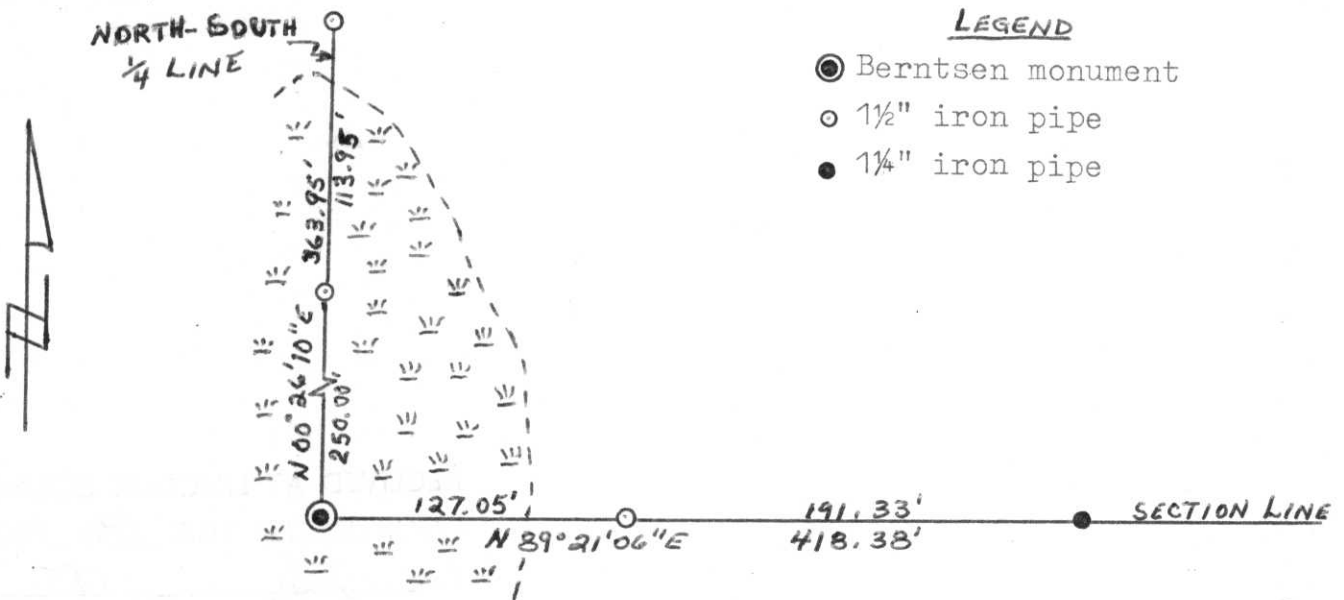


Section 21

b) (f) (g) (h) Description of monument found at this corner and if it was accepted, state all evidence (material, testimonial, occupational, plats, records, other monuments) used as a basis for accepting. If not accepted or if nothing was found, state evidence used as basis for establishing location. If reestablished through lost corner proportionate methods, indicate all monuments, distances and directions used to establish. Original Gov't Survey: July 1861 by Alfred Millard, set wood post for corner with bearings, tamarack 7 N 45° E 5 links & tamarack 8 S 28° E 78 links. I set a 1½" iron pipe for the corner on a survey in Sep. 1978 equidistant & on a straight line between the Southwest & Southeast corners of Section 21.



c) (d) (e) Plan view of corner with ties to at least 4 witness monuments. If in disagreement with previously established corner, show the distances between the two corners and also indicate the ties to the disputed corner.



**LEGEND**

- Berntsen monument
- 1½" iron pipe
- 1/4" iron pipe

(i) I, Lester J. Schmit  
 (type or print name) certify that the corner location on this record was determined by me or under my direction and control and that this U.S. Public Land Survey Monument Record is correct and complete to the best of my knowledge and belief.

Lester J. Schmit                      7 July 85  
 Signature                                      Date



Index No. 9-11