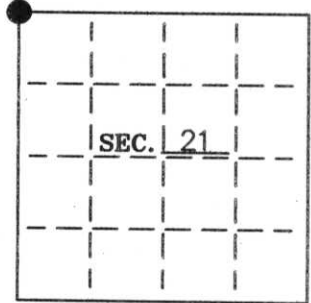


U. S. PUBLIC LAND SURVEY MONUMENT RECORD

Note: This form is intended and designed to fulfill all requirements of Wisconsin Administrative Code-Chapter A-E 7.08 U. S. Public Land Survey Monument Record (3)(a)(b)(c)(d)(e)(f)(g)(h)(i). An additional sheet may be added if necessary to conform with said requirements.

(a) CORNER LOCATION: State Plane Coordinates
 NW corner of Sec. 21 X ---
 Township 35 North Y ---
 Range 6 East Datum Base ---
 Town Bradley County of Lincoln



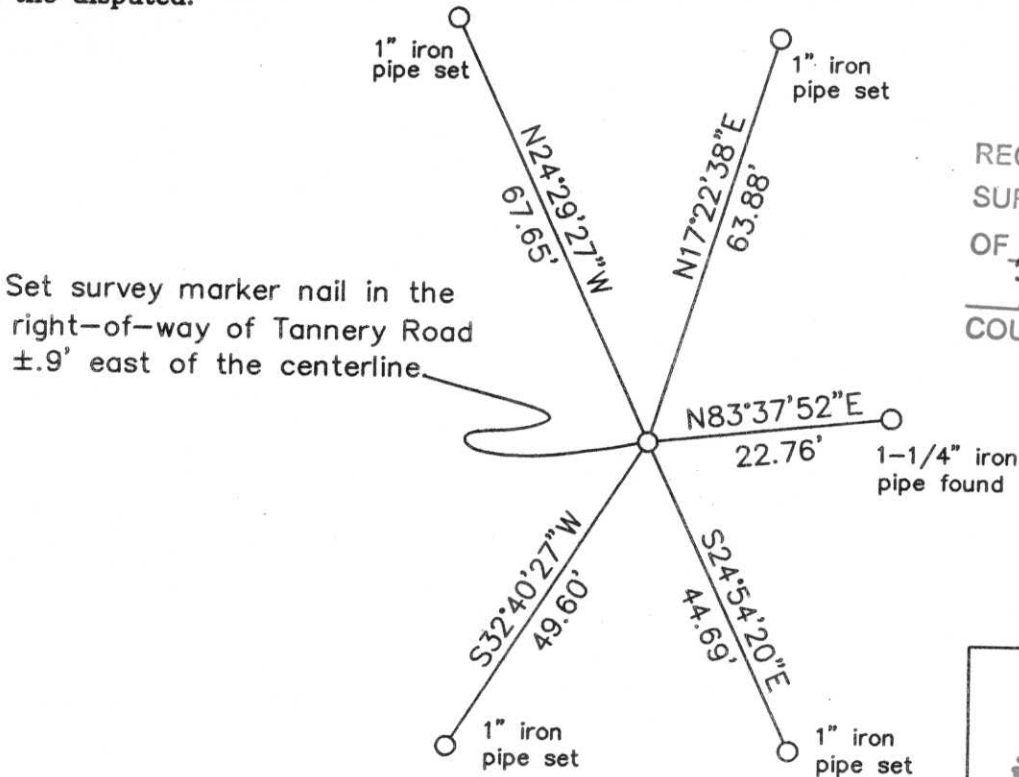
(b) HISTORY OF ORIGINAL CORNER ESTABLISHMENT:
 Original Surveyor: Alfred Millard
 Date of Survey: Commenced Oct. 1860
 Completed July 1861

Original B.T.'S
 5" Tamarac, N5°W, 7 lks
 9" Tamarac, S55°E, 10 lks

(b)(f)(g)(h) Description of monument found at this corner and if it was accepted—state all evidence (material—testimonial—occupation—plats—records—other monuments) used as a basis for accepting. If not accepted or if nothing was found state evidence used as basis for establishing location. If reestablished through lost corner proportionate methods indicate all monuments—distances and directions used to establish. Indicate type of monument and sign post found or set.

- 1967—W.H. Stuth shows an iron pipe in the road right-of-way and a witness corner 23.1 feet to the east of the Northwest Corner of Section 21.
- 1976—Anthony Kiedrowski found a spike in the road and a scribed 4"x4" post 23.1 feet east of the Northwest corner and replaced the spike with a Berntsen monument, witnessed by a 1" iron pipe, east 22.90' and a power pole, S40°E, 42.27'.
- 2007—We set a survey marker nail in the pavement based on the Lincoln County GPS coordinate position, and found Kiedrowski's witness pipe tipped to the north, 22.76'. The survey marker nail was witnessed as shown below.

(c)(d)(e) Plan view of corner with ties to at least 4 witness monuments. If in disagreement with previously established corner—show the distances between the two corners and also indicate the ties to the disputed.



RECEIVED BY LINCOLN COUNTY SURVEYOR THIS 26TH DAY OF February 20 07
 Tony Dahn
 COUNTY SURVEYOR

(i) I Stuart L. Foltz S-1170 hereby certify that the corner location on this record was determined by me or under my direction and control and that this U.S. Public Land Survey Monument Record is correct and complete to the best of my knowledge and belief.

Signature Stuart L. Foltz Date 2/16/2007
 Foltz and Associates, Inc.



INDEX NO.

M-5

CERTIFIED LAND CORNER RESTORATION

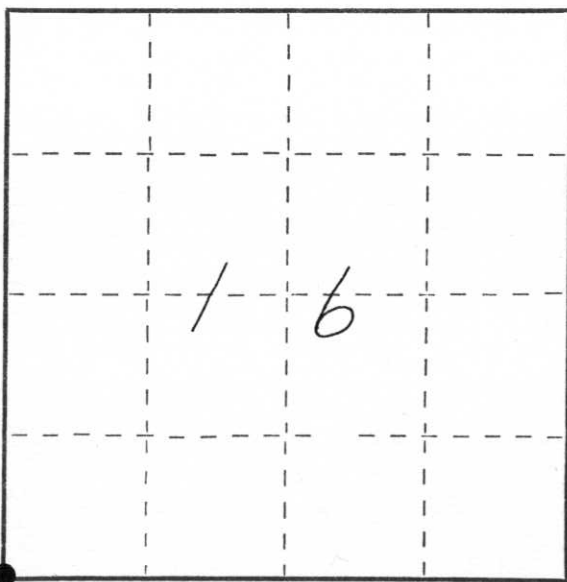
Index No. M-9

State of Wisconsin }
County of Lincoln } ss.

I Anthony B. Kiedrowski, do hereby
certify that on the 28th day
of September, 1976, I found
evidence of the southwest
corner of Sec 16-35-6E
Township....., North, Range
....., Fourth, Principal Meridian,
as described hereon; and that from this evidence
I established a new monument and accessories
as described hereon to perpetuate the original
location of this corner.

Resident witnesses:

.....
.....
.....



○ = Corner monument restored.

History of original corner establishment:

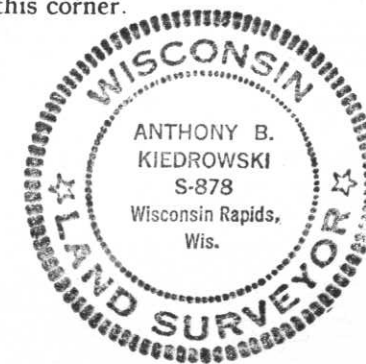
Original corner set by Deputy Surveyor Alfred Millard, Oct., 1861.

Description of corner evidence found:

Reset this corner by retracing a survey by Lester Schmidt (RLS) done
Oct. 21, 1975. Excavated by hand and found a spike in the underlying roadbed.
A scribed 4"x4" post was found 23.1' east of corner. Accepted corner after
running an EDM and T-2 traverse of the entire section. Set a standard aluminum
Berstein monument.

Description of monument and accessories I established to perpetuate the original location of this corner.

See ties on reverse side.



Dated at Wis. Rapids, Wis., this 5th day of Oct., 1976

Signature A. B. Kiedrowski Title Reg. Land surveyor Registration No. S-878
(County Surveyor, Registered Land Surveyor, or other duly authorized official)

Office of Register of Deeds, County of....., I hereby certify that the within
instrument was filed in this office for record on the..... day of....., 19.....
at..... o'clock..... M.

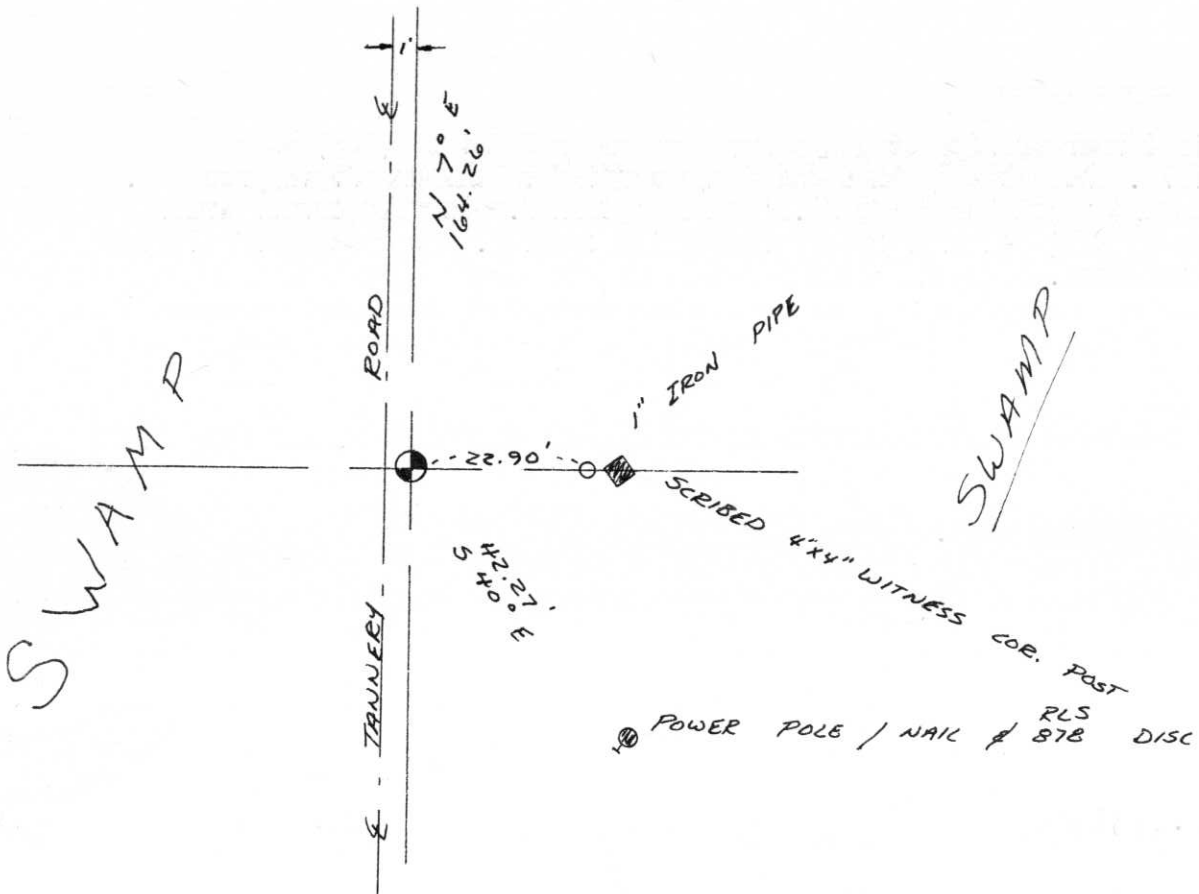
.....
(Register of Deeds)

By..... Deputy

SW CORNER

16-35-6

RLS
POWER POLE / NAIL # 878 DISC



RLS
POWER POLE / NAIL # 878 DISC

RECEIVED AT LINCOLN COUNTY
 COURTHOUSE THIS 28th DAY
 OF Oct. 1976.
 Tax Pat Phelan
 DESCRIPTION OFFICE