

U.S. PUBLIC LAND SURVEY MONUMENT RECORD

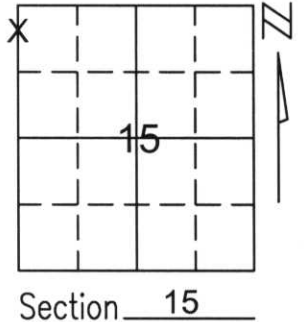
Note: This form is intended and designed to fulfill all requirements of Wisconsin Administrative Code, Chapter A-E 5.02, U.S. Public Land Survey Monument Record (3)(a)(b)(c)(d)(e)(f)(g)(h)(i). An additional sheet may be added if necessary to conform with said requirements.

(a) Corner location: Township 35 North

Range 6 East

Town/City/Village BRADLEY

County LINCOLN



Section 15

(b)(f)(g)(h) Description of monument found at this corner and if it was accepted, state all evidence (material, testimonial, occupational, plats, records, other monuments) used as a basis for accepting. If not accepted or if nothing was found, state evidence used as basis for establishing location. If reestablished through lost corner proportionate methods, indicate all monuments, distances and directions used to establish.

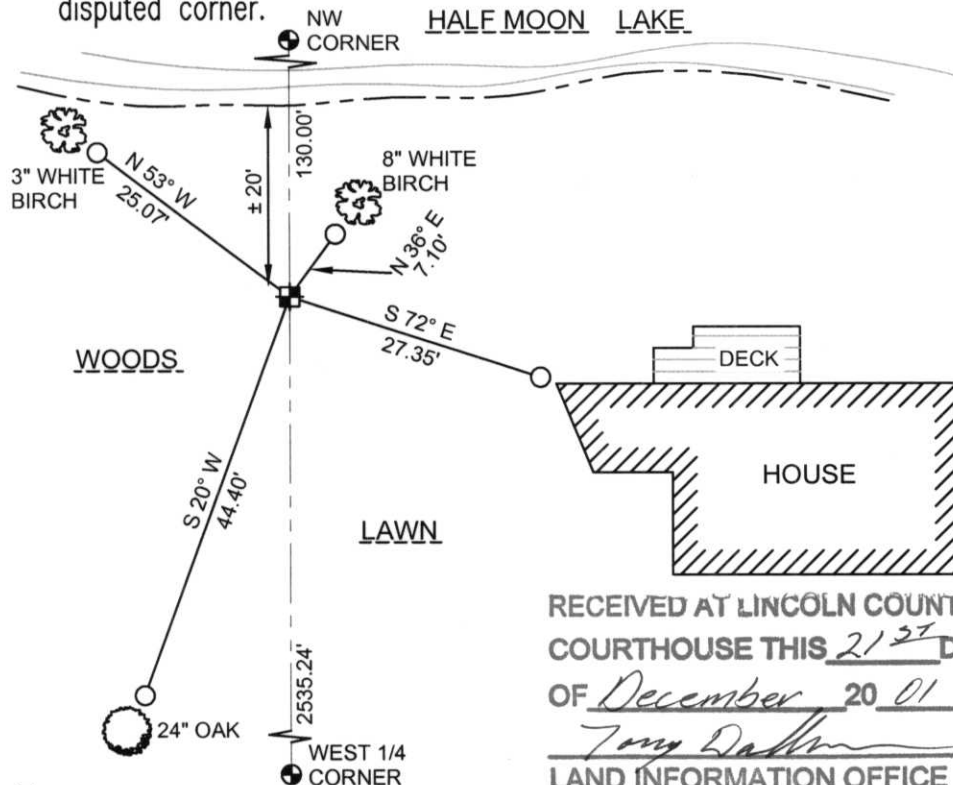
THE NORTHWEST CORNER OF SECTION 15 FALLS IN "HALF MOON LAKE", WE SEARCHED ALONG THE NORTH AND WEST LINE OF SECTION 15, THE NORTH LINE OF SECTION 16 AND THE WEST LINE OF SECTION 10. WE FOUND (2) 4" x 4" CEDAR POST MEANDERING A PENINSULA ALONG THE NORTH LINE OF SECTION 15 AND A 2" IRON PIPE, 6' WEST OF A 4" x 4" CONCRETE MONUMENT AT THE SW 1/4 CORNER OF THE NW 1/4 OF THE NW 1/4 OF SECTION 15.

WE ALSO FOUND 3 IRONS ALONG THE NORTH LINE OF SECTION 16 FROM LESTER SCHMIDT'S SURVEY.

AFTER REVIEWING ALL EVIDENCE, WE INTERSECTED A LINE FROM THE NORTH 1/4 CORNER OF SECTION 15 THROUGH THE TWO WOOD POSTS AND FROM THE RECORDED WEST 1/4 CORNER OF SECTION 10, THROUGH THE RECORDED MEANDER CORNER ALONG THE WEST LINE OF SECTION 10. THIS LOCATION FITS FOUND IRONS ALONG THE NORTH LINE OF SECTION 16 AND THE FOUND 2" IRON PIPE AT THE SW 1/4 CORNER OF THE NW 1/4 OF THE NW 1/4 OF SECTION 15.

SET LINCOLN COUNTY MONUMENT ALONG THE SOUTH SHORE ON LINE BETWEEN THE CALCULATED NORTHWEST CORNER AND WEST 1/4 OF SECTION 15. TIED OUT CORNER TO PERPETUATE LOCATION.

(c)(d)(e) Plan view of corner with ties to at least 4 witness monuments. If in disagreement with previously established corner, show the distances between the two corners and also indicate the ties to the disputed corner.



COORDINATES ARE REFERENCED TO THE LINCOLN COUNTY COORDINATE SYSTEM AS DEVELOPED BY THE WISCONSIN DEPARTMENT OF TRANSPORTATION AND WERE DETERMINED BY GPS OBSERVATIONS ON CONTROL POINTS AS SUPPLIED BY LINCOLN COUNTY.

BEARINGS ARE REFERENCED TO MAGNETIC NORTH.

- - SET 3/4" x 30" REBAR W/ ALUM CAP 1' FROM BEARING TREE
- ⊕ - SOUTH MEANDER CORNER FOR NW1/4 CORNER SET LINCOLN COUNTY MONUMENT W/ ALUM CAP

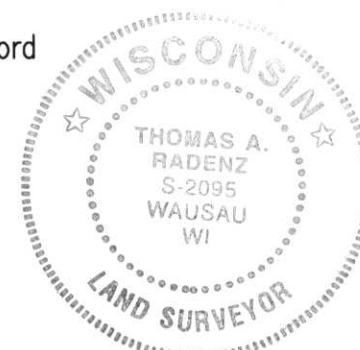
NORTH

NOT TO SCALE

RECEIVED AT LINCOLN COUNTY COURTHOUSE THIS 21ST DAY OF December 20 01
Tom Radenz
LAND INFORMATION OFFICE

(i) I, Thomas A. Radenz, RLS certify that the corner location on this record was determined by me or under my direction and control and that this U.S. Public Land Survey Monument Record is correct and complete to the best of my knowledge and belief.

Thomas A. Radenz
Signature Date 12/21/01



Index No. FS-13