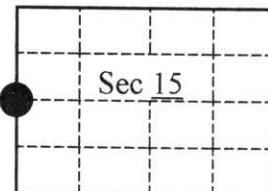


U. S. PUBLIC LAND SURVEY MONUMENT RECORD

Note: This form is intended and designed to fulfill all requirements of Wisconsin Administrative Code, Chapter A-E 7.08 U.S. Land Survey Monument Record (3)(a)(b)(c)(d)(e)(f)(g)(h)(i). An additional sheet may be added if necessary to conform with said requirements.

(a) CORNER LOCATION: State Plane Coordinates
 W $\frac{1}{4}$ Corner of Sec. 15 X _____
 Township 35 North Y _____
 Range 6 East Datum Base _____
 Town Bradley County of Lincoln



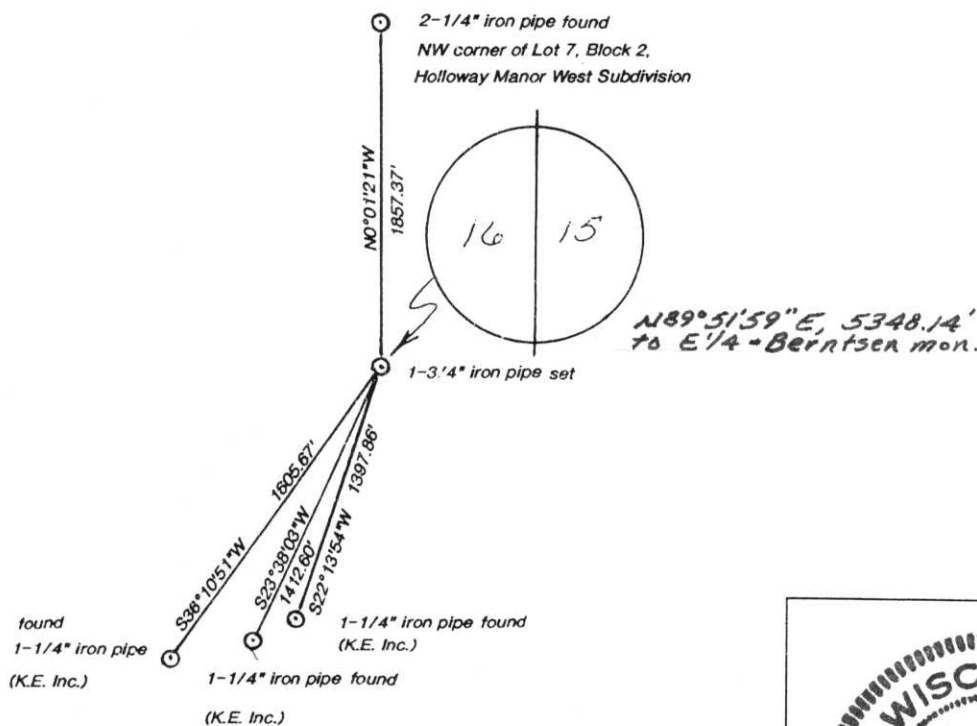
(b) HISTORY OF ORIGINAL CORNER ESTABLISHMENT Original B.T.'s
 Original Surveyor: Alfred Millard Tamarack 6", N16°E, 4.56 links
 Date of Survey: Commenced Oct., 1860 Tamarack 6", N3°W, 8.69 links
 Completed July, 1861

(b)(f)(g)(h) Description of monument found at this corner and if it was accepted, state all evidence (material, testimonial, occupational, plats, records, other monuments) used as a basis for accepting. If not accepted or if nothing was found, state evidence used as basis for establishing location. If reestablished through lost corner proportionate methods, indicate all monuments, distances and directions used to establish. Indicate type of monument and sign post found or set.

- 1861 - Deputy Surveyor Alfred Millard set original quarter section post.
- 1976 - Anthony B. Kiedrowski found and accepted a 4"x 4" wood post, 12'-plus long and noted it was apparently the same post called for in the "Holloway Manor West Subdivision". He verified the post as the correct corner location by traversing all of Sec. 16 and tying into the subdivision at several points. He left post as monument and set a five foot steel fence post alongside. (See monument record)
- 1997 - I found the fence post called for in the 1976 Kiedrowski survey, but the wood post at actual corner location was gone. I set a 1 $\frac{1}{4}$ " iron pipe, 10' long, to remonument corner location by holding record distances as shown below.

(c)(d)(e) Plan view of corner with ties to at least 4 witness monuments. If in disagreement with previously established corner, show the distances between the two corners and also indicate the ties to the disputed.

RECEIVED AT LINCOLN COUNTY
 COURTHOUSE THIS 15th DAY
 OF Jan 19 99
Pat. Wheeler
 LAND INFORMATION OFFICE



(i) I, Charles E. Winkler, #S-1431
 hereby certify that the corner location on this record was determined by me or under my direction and control and that this U.S. Public Land Survey Monument Record is correct and complete to the best of my knowledge and belief.

Charles E. Winkler 1/12/1999
 Signature Foltz & Associates, Inc. Date



I
 n
 d
 e
 x
 N
 o.
 K-13

CERTIFIED LAND CORNER RESTORATION

Index No. K-13

State of Wisconsin }
County of Lincoln } ss.

History of original corner establishment:

Original set by Deputy Surveyor Alfred Millard, 1861.

I, Anthony B. Kiedrowski, R.L.S., do hereby certify that on the 28th day of September, 1976, I found evidence of the East quarter corner corner of Sec. 16 Township 35, North, Range 6, Fourth, Principal Meridian, as described hereon; and that from this evidence I established a new monument and accessories as described hereon to perpetuate the original location of this corner.

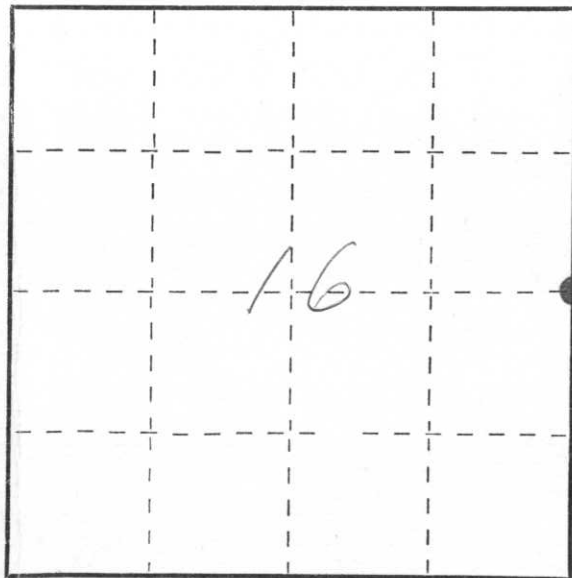
Description of corner evidence found:

Found approximately 4"x4" wood post, 12'+ - long. This is apparently the same post called for in the survey of Hollow Manor West Sub. No other evidence near. Using an EDM and T-2 traverse of all of Sec. 16, and tying into the sub at several points, the post was verified as being the corner called for. This corner falls in a floating bog and is very difficult to get to. This point could not be monumented with a Bernstsen monument. The post was well set and quite sound, so left it as is and set a 5 foot steel fence post alongside. Put a "Do not disturb" sign on the steel post.

Resident witnesses:

.....
.....
.....

Description of monument and accessories I established to perpetuate the original location of this corner.



○ = Corner monument restored.

Dated at 18th Wis. Rapids, Wis., this 18th day of Sept, 1976

Signature Anthony B. Kiedrowski Title Reg. Land Surv. Registration No. 878
(County Surveyor, Registered Land Surveyor, or other duly authorized official)

Office of Register of Deeds, County of _____, I hereby certify that the within instrument was filed in this office for record on the _____ day of _____, 19____ at _____ o'clock _____ M.

.....
(Register of Deeds)

By _____ Deputy

133
LITTON
VAGUE
133

CERTIFIED LAND CORNER RESTORATION

Index No. K-13

State of Wisconsin }
County of Lincoln } ss.

History of original corner establishment:

Original set by Deputy Surveyor Alfred Millard, 1861.

I, Anthony B. Kiedrowski, R.L.S., do hereby certify that on the 28th day of September, 1976, I found evidence of the East quarter corner corner of Sec. 16 Township 35, North, Range 6, Fourth, Principal Meridian, as described hereon; and that from this evidence I established a new monument and accessories as described hereon to perpetuate the original location of this corner.

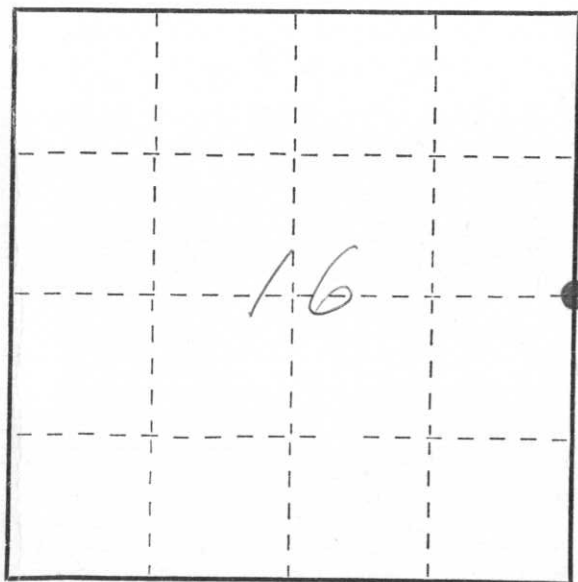
Description of corner evidence found:

Found approximately 4"x4" wood post, 12'+ - long. This is apparently the same post called for in the survey of Hollow Manor West Sub. No other evidence near. Using an EDM and T-2 traverse of all of Sec. 16, and tying into the sub at several points, the post was verified as being the corner called for. This corner falls in a floating bog and is very difficult to get to. This point could not be monumented with a Bernstsen monument. The post was well set and quite sound, so left it as is and set a 5 foot steel fence post alongside. Put a "Do not disturb" sign on the steel post.

Resident witnesses:

.....
.....
.....

Description of monument and accessories I established to perpetuate the original location of this corner.



○ = Corner monument restored.

Dated at 18th Wis. Rapids, Wis., this 18th day of Sept, 1976

Signature Anthony B. Kiedrowski Title Reg. Land Surv. Registration No. 878
(County Surveyor, Registered Land Surveyor, or other duly authorized official)

Office of Register of Deeds, County of....., I hereby certify that the within instrument was filed in this office for record on the..... day of....., 19..... at..... o'clock..... M.

.....
(Register of Deeds)

By..... Deputy

Note:

The West Line of the
Swifty Sec 16 assigned
a bearing of North as
a basis of bearings
hereon.

NW Corner Lot 7,
Block 2, Hollow
Manor West
Sub, (2" Iron
Pipe)

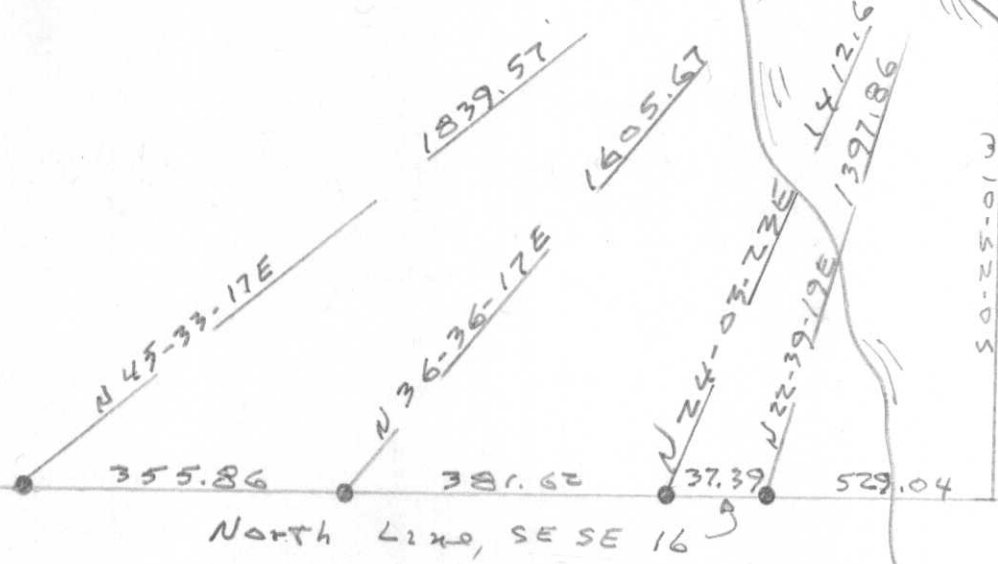
N

W 1/4 Corner
Sec 16

S 89-33-41 E 5302.10

East 1/4 Corner
Sec 16

S 0-25-01 W 1857.37'
East Line of Sub.



Jersey City
Flowage

• = 1" Iron Pipe

NOT TO SCALE

RECEIVED AT LINCOLN COUNTY
COURTHOUSE THIS 28th DAY
OF Oct. 19 76.
Pat Shreeve
TAX DESCRIPTION OFFICE