

CERTIFIED LAND CORNER RESTORATION

Index No. L-12

State of Wisconsin }
County of } ss.

History of original corner establishment:

I....., do hereby
certify that on the.....day
of....., 19....., I found
evidence of the.....
corner of.....
Township....., North, Range
....., Fourth, Principal Meridian,
as described hereon; and that from this evidence
I established a new monument and accessories
as described hereon to perpetuate the original
location of this corner.

Description of corner evidence found:

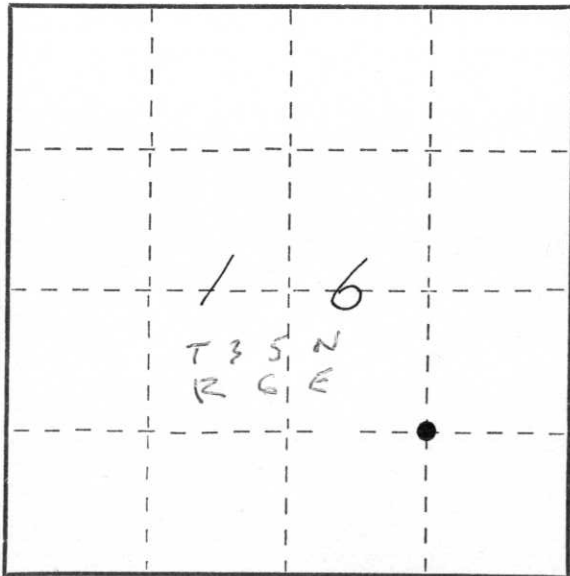
Resident witnesses:

.....
.....
.....

Description of monument and accessories I established to perpetuate the original location of this corner.

1"x24", 1.68 #/ft iron pipe set. Point located by standard section
protraction.

See reverse side for ties.



○ = Corner monument restored.



Dated at Wis Rapids, Wis., this 5th day of OCT, 1978

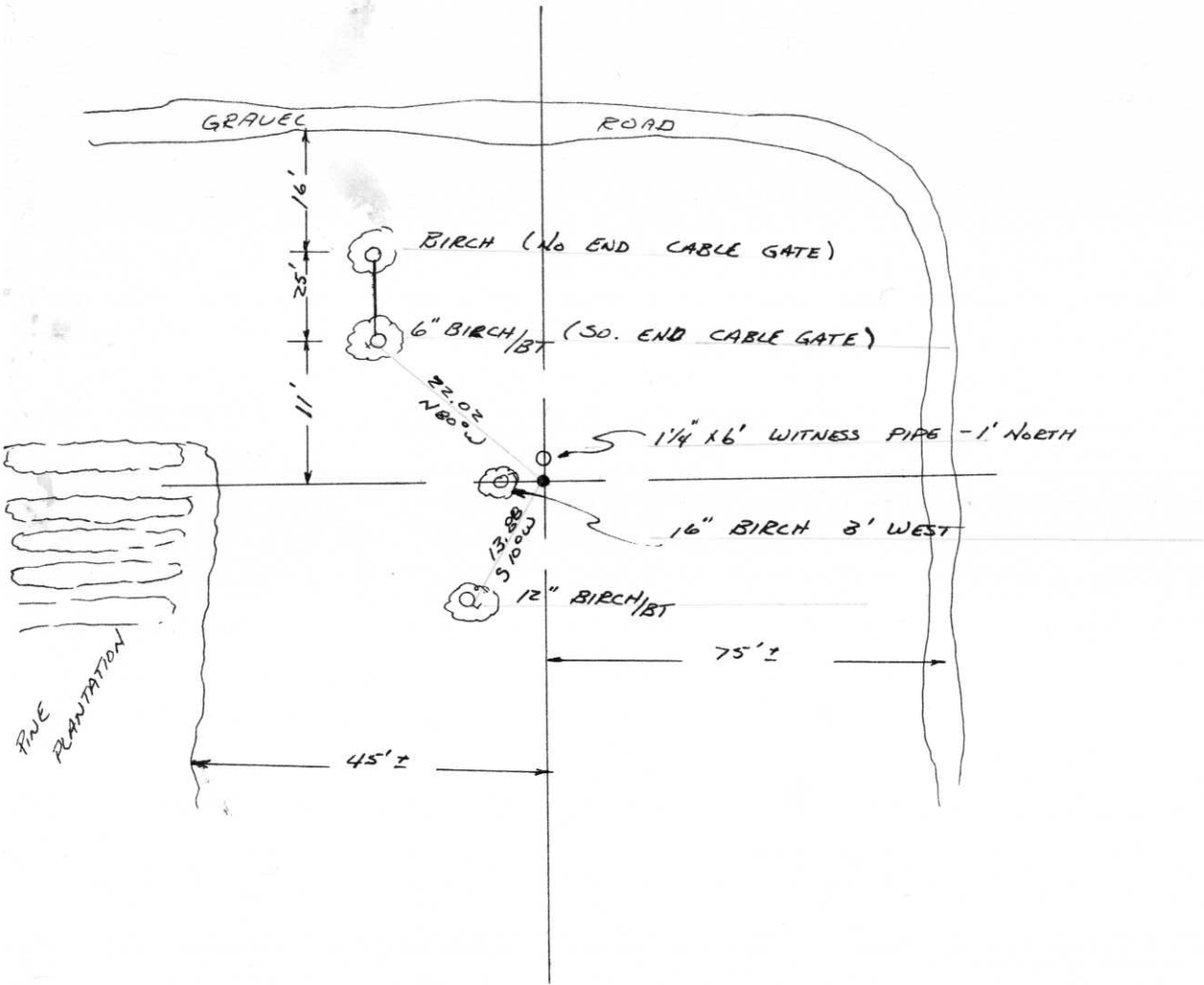
Signature Anthony B. Kiedrowski Title RLS Registration No. 878
(County Surveyor, Registered Land Surveyor, or other duly authorized official)

Office of Register of Deeds, County of....., I hereby certify that the within
instrument was filed in this office for record on the.....day of....., 19.....
at.....o'clock..... M.

.....
(Register of Deeds)

By.....Deputy

NW CORNER SE 1/4 SE 1/4 16-35-6 1" X 24" IRON PIPE



RECEIVED AT LINCOLN COUNTY
 COURTHOUSE THIS 28th DAY
 OF Oct. 1976.
Pat Driebe
 TAX DESCRIBED