

CERTIFIED LAND CORNER RESTORATION

Index No. M-11

State of Wisconsin }
County of Lincoln } ss.

History of original corner establishment:

Original corner set by Deputy Surveyor Alfred Millard, Oct., 1861.

I Anthony B. Kiedrowski....., do hereby certify that on the 28th..... day of September....., 1976....., I found evidence of the south quarter..... corner of Sec. 16-35-6E..... Township....., North, Range....., Fourth, Principal Meridian, as described hereon; and that from this evidence I established a new monument and accessories as described hereon to perpetuate the original location of this corner.

Description of corner evidence found:

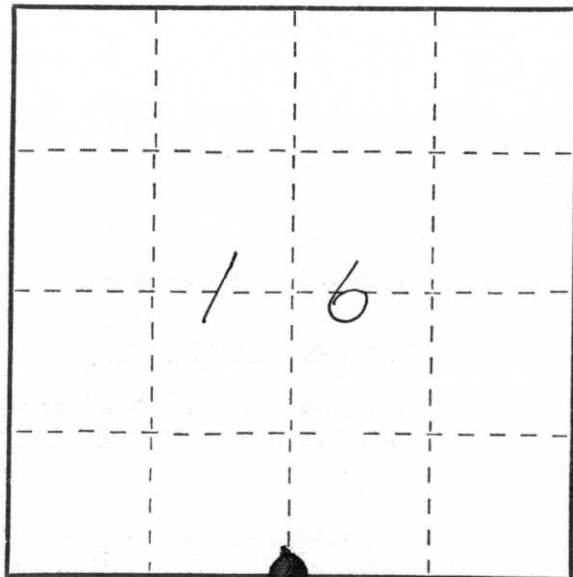
Ran a random line into the approximate location of the south quarter corner. Searched the area and found a 4" x 48" iron pipe. Along side that I found the remains of a pointed wood post. Replaced the post with a standard aluminum Berstain monument. Left the 4" pipe in place as a guard post. Cound find no record of who put the pipe there. Accepted the point as correct after running an EDM - T-2 traverse of the entire section. The distance between the southwest corner and here is approximately 40' longer than called for in the original notes.

Resident witnesses:

.....
after
.....
.....

Description of monument and accessories I established to perpetuate the original location of this corner.

See tie sketch on reverse side.



○ = Corner monument restored.



Dated at Wis. Rapids....., Wis., this 5th..... day of Oct......, 1976

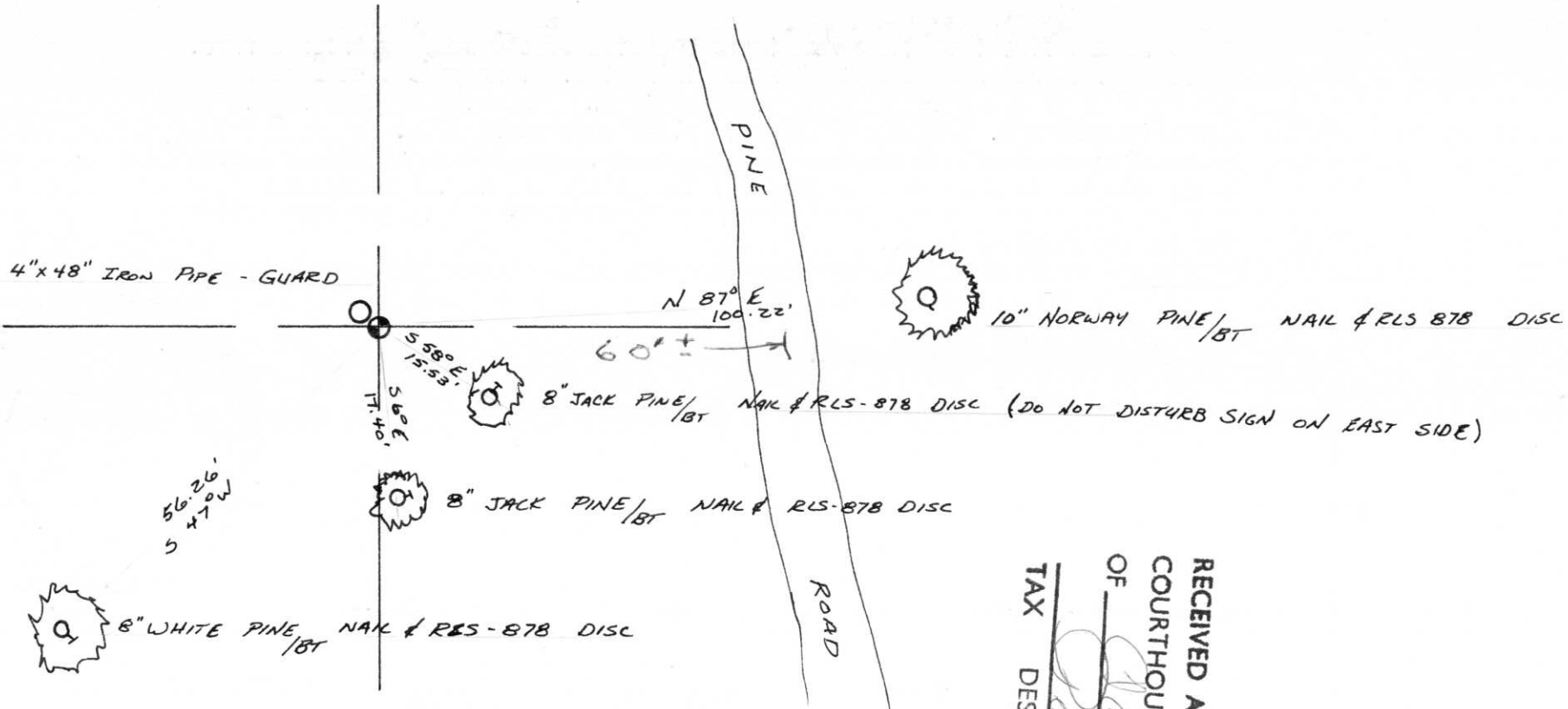
Signature A B Kiedrowski..... Title REG. Land Surveyor..... Registration No. S-878
(County Surveyor, Registered Land Surveyor, or other duly authorized official)

Office of Register of Deeds, County of....., I hereby certify that the within instrument was filed in this office for record on the..... day of....., 19..... at..... o'clock..... M.

.....
(Register of Deeds)

By..... Deputy

S1/4 16-35-6



RECEIVED AT LINCOLN COUNTY
 COURTHOUSE THIS 28th DAY
 OF Feb. 1976.
 Tax Pat O. Baker
 DESCRIPTION OFFICE