

CERTIFIED LAND CORNER RESTORATION

Index No. M-12

State of Wisconsin }
County of..... } ss.

History of original corner establishment:

I....., do hereby
certify that on the..... day
of....., 19....., I found
evidence of the.....
corner of.....
Township....., North, Range
....., Fourth, Principal Meridian,
as described hereon; and that from this evidence
I established a new monument and accessories
as described hereon to perpetuate the original
location of this corner.

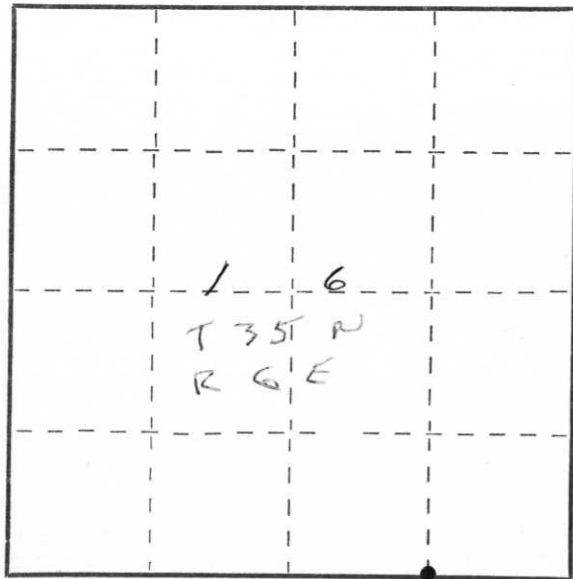
Description of corner evidence found:

Resident witnesses:

.....
.....
.....

Description of monument and accessories I established to perpetuate the original location of this corner.

1"x24", 1.68#/ft iron pipe set by standard section protraction.



○ = Corner monument restored.



Dated at Wis Rapids, Wis., this 5th day of OCT, 19 26

Signature A B Kiedrowski Title RES Registration No. 878
(County Surveyor, Registered Land Surveyor, or other duly authorized official)

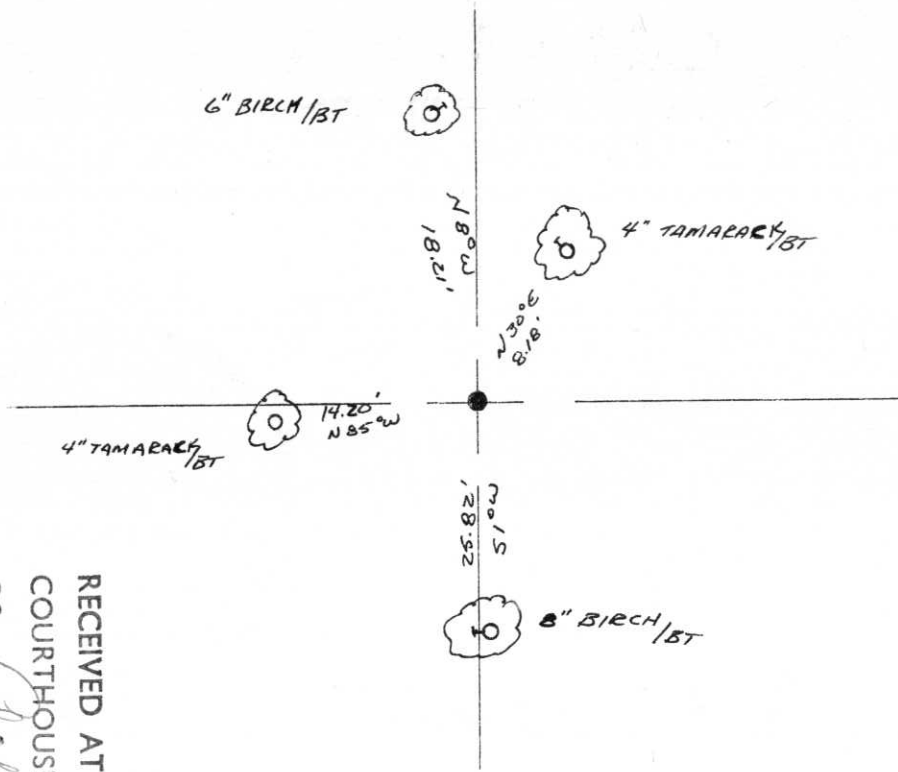
Office of Register of Deeds, County of....., I hereby certify that the within
instrument was filed in this office for record on the..... day of....., 19.....
at..... o'clock..... M.

.....
(Register of Deeds)

By..... Deputy

SW CORNER OF THE SE 1/4 OF THE SE 1/4 16-35-6

1" X 24" IRON PIPE



RECEIVED AT LINCOLN COUNTY
 COURTHOUSE THIS 21st DAY
 OF Sept. 1976.
 Tax Description Office
Pat Shuler