

# U.S. PUBLIC LAND SURVEY MONUMENT RECORD

Note: This form is intended and designed to fulfill all requirements of the Wisconsin Administrative Code, Chapter A-E 7.08 U.S. Public Land Monument Record (3)(a)(b)(c)(d)(e)(f)(g)(h)(i). An additional sheet may be added if necessary to conform with said requirements.

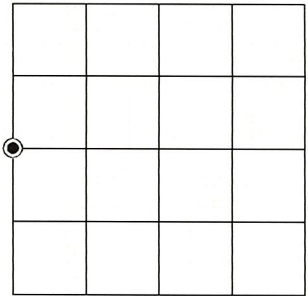
**(a) CORNER LOCATION:**

West Quarter Corner of Section 14  
 Township 35 North  
 Range 6 East  
 Town of Bradley  
 County of Lincoln

North:  
 East:  
 Datum:  
 GNSS Method:  
 GNSS Control:

(RECORDING AREA)

**SECTION 14**



**(b) HISTORY OF ORIGINAL CORNER ESTABLISHMENT**

Original Surveyor:  
 Date of Survey: Commenced \_\_\_\_\_  
 Completed \_\_\_\_\_  
 Original B.T.'S \_\_\_\_\_

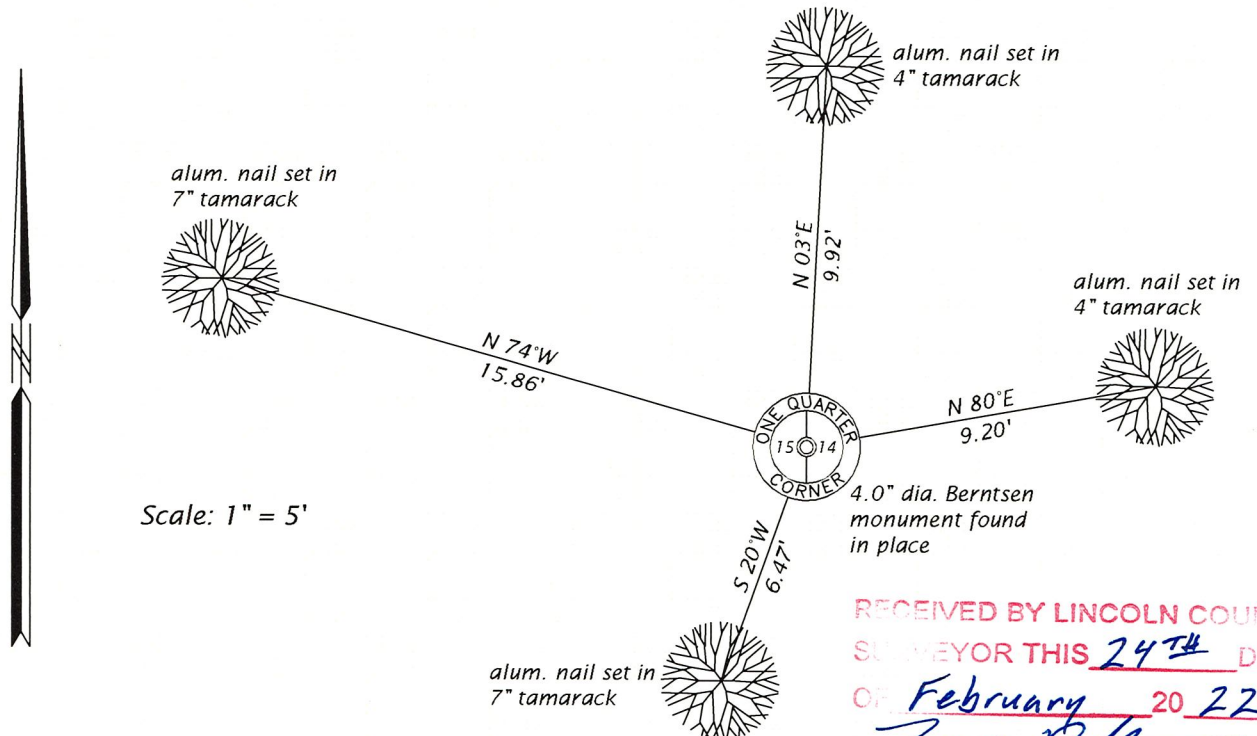
*SEE PREVIOUS U.S.P.L.S. MONUMENT RECORD DATED MARCH 2, 1978.*

(f)(g)(h) DESCRIPTION OF MONUMENT FOUND AT THIS CORNER AND IF IT WAS ACCEPTED, STATE ALL EVIDENCE (MATERIAL, TESTIMONIAL, OCCUPATIONAL, PLATS, RECORD, OTHER MONUMENTS) USED AS A BASIS FOR ESTABLISHING LOCATION. IF NOT ACCEPTED OR IF NOTHING WAS FOUND, STATE EVIDENCE USED AS BASIS FOR ESTABLISHING LOCATION. IF REESTABLISHED THROUGH LOST CORNER PROPORTIONATE METHODS, INDICATE ALL MONUMENTS, DISTANCES AND DIRECTIONS USED TO ESTABLISH. INDICATE TYPE OF MONUMENT AND SIGN POST FOUND OR SET.

This is a perpetuation of a previous U.S.P.L.S. Monument Record by Lester J. Schmit, RLS, dated March 2, 1978, and filed in the office of the Lincoln County Register of Deeds. A complete history of the corner can be found on the previous monument record. I accept the previous location as a true and faithful perpetuation or reestablishment of the original corner location and further perpetuate it as follows.

November 8, 2021, we found and I accepted the Berntsen monument set by Schmit in 1978. All of Schmit's previous bearing trees are now gone. See below for updated references.

(c)(d)(e) PLAN VIEW OF CORNER WITH TIES TO AT LEAST 4 WITNESS MONUMENTS. IF IN DISAGREEMENT WITH PREVIOUSLY ESTABLISHED CORNER, SHOW THE DISTANCE BETWEEN THE TWO CORNERS AND ALSO INDICATE THE TIES TO THE DISPUTED CORNER.



RECEIVED BY LINCOLN COUNTY  
 SURVEYOR THIS 24<sup>TH</sup> DAY  
 OF February 20 22  
*Tony Pahl*  
 COUNTY SURVEYOR

(i) I, JAMES D. REIN, PROFESSIONAL LAND SURVEYOR NO. S-1234 HEREBY CERTIFY THAT THE CORNER LOCATION ON THIS RECORD WAS DETERMINED BY ME OR UNDER MY DIRECTION AND CONTROL AND THAT THIS U.S. PUBLIC LAND SURVEY MONUMENT RECORD IS CORRECT AND COMPLETE TO THE BEST OF MY KNOWLEDGE AND BELIEF.

*James D. Rein*  
 SIGNATURE  
 2-21-22  
 DATE



INDEX NO. K - 17

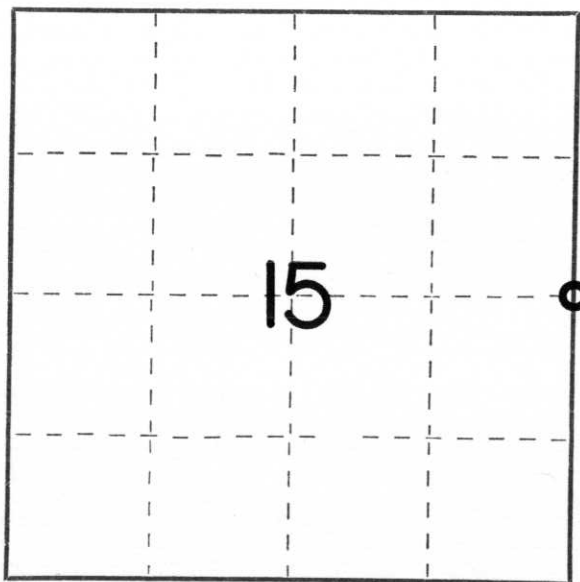
CERTIFIED LAND CORNER RESTORATION

Index No. K-17

State of Wisconsin }  
County of Lincoln } ss.

I Lester J. Schmit, do hereby  
certify that on the 11th day  
of July, 1977, I found  
evidence of the East 1/4  
corner of Section 15  
Township 35, North, Range  
6 East, Fourth, Principal Meridian,  
as described hereon; and that from this evidence  
I established a new monument and accessories  
as described hereon to perpetuate the original  
location of this corner.

Resident witnesses:



○ = Corner monument restored.

History of original corner establishment:

Surveyor: Alfred Millard  
Date: 20 October 1860  
Monumentation: Wood Post  
Witnesses: Spruce 5; S 37° W; 70 links  
Spruce 6; N 13° E; 74 links

Description of corner evidence found: 1" iron pipe and scribed wood post.  
P.K. Nail in 8" Black Spruce; N 66°23'45" E; 8.68'  
P.K. Nail in 10" Tamarac; S 02°44'39" E; 9.89'

Description of monument and accessories I established to perpetuate the original location of this corner.

Berntsen Monument - 30" (set 2" above ground)

P.K. Nail in 6" Black Spruce; S 72°48'52" W; 15.05'  
P.K. Nail in 6" Black Spruce; N 48°17'14" W; 7.36'

Dated at Tomahawk, Wis., this 2nd day of March, 1978.

Signature Lester J. Schmit Title Land Surveyor Registration No. S-1192  
(County Surveyor, Registered Land Surveyor, or other duly authorized official)

Office of Register of Deeds, County of \_\_\_\_\_, I hereby certify that the within  
instrument was filed in this office for record on the \_\_\_\_\_ day of \_\_\_\_\_, 19\_\_\_\_  
at \_\_\_\_\_ o'clock \_\_\_\_\_ M.

\_\_\_\_\_  
(Register of Deeds)

By \_\_\_\_\_ Deputy