

U.S. PUBLIC LAND SURVEY MONUMENT RECORD

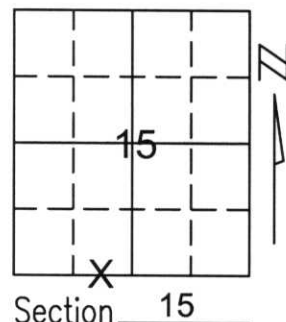
Note: This form is intended and designed to fulfill all requirements of Wisconsin Administrative Code, Chapter A-E 5.02, U.S. Public Land Survey Monument Record (3)(a)(b)(c)(d)(e)(f)(g)(h)(i). An additional sheet may be added if necessary to conform with said requirements.

(a) Corner location: Township 35 North

Range 6 East

Town/City/Village BRADLEY

County LINCOLN

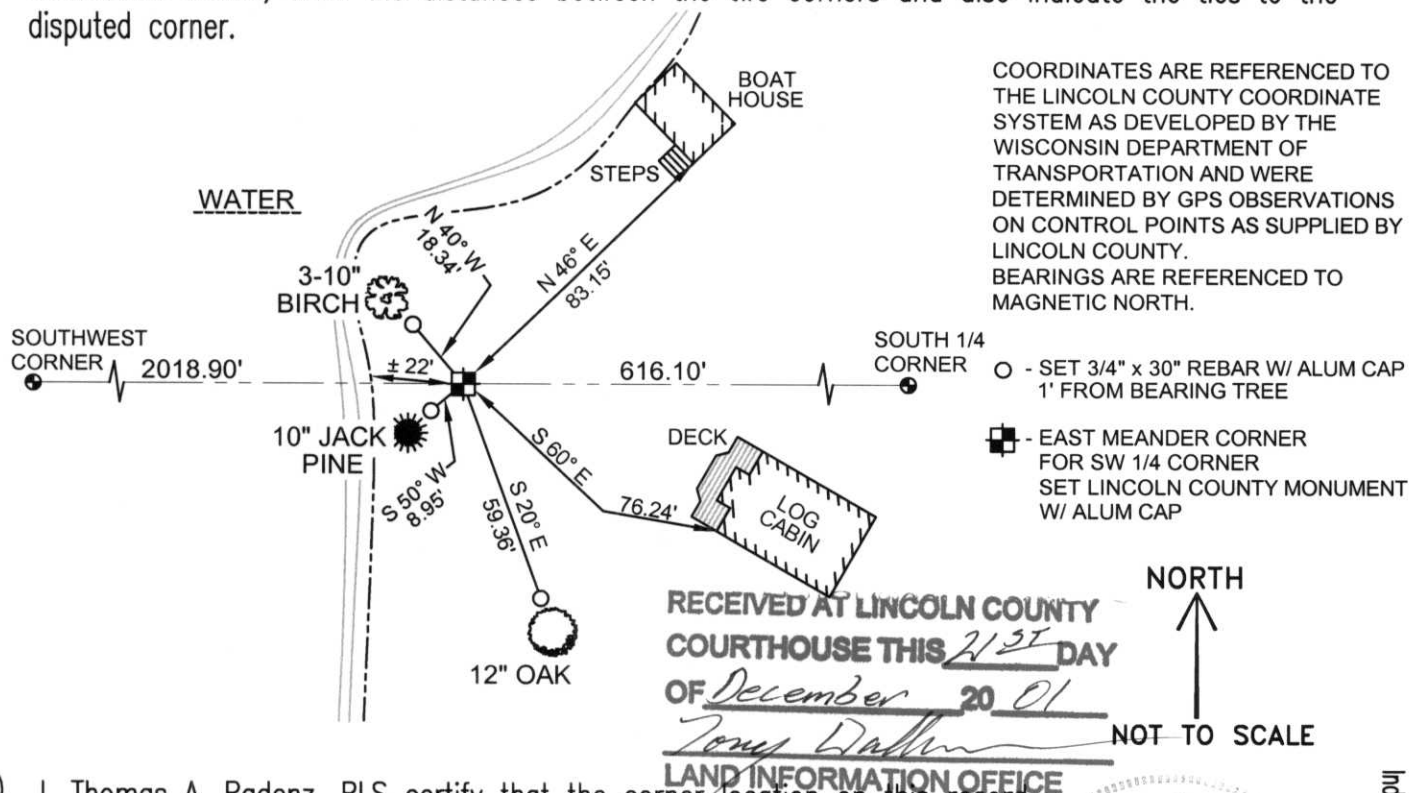


(b)(f)(g)(h) Description of monument found at this corner and if it was accepted, state all evidence (material, testimonial, occupational, plats, records, other monuments) used as a basis for accepting. If not accepted or if nothing was found, state evidence used as basis for establishing location. If reestablished through lost corner proportionate methods, indicate all monuments, distances and directions used to establish.

AFTER EXTENSIVE RESEARCH IN SECTION 15, 16, 21, AND 22. WE DECIDED TO HOLD THE SECTION SUMMARY (#L176) ON FILE AT THE LINCOLN COUNTY LAND INFORMATION OFFICE PREPARED BY LESTER SCHMIDT. THIS WAS THE BEST EVIDENCE FOR THE LOCATION OF THE SOUTHWEST CORNER OF SECTION 15.

WE FOUND 2" MEANDER CORNER FROM A PLAT OF SURVEY FOR FREDRICK DREGER SURVEYED BY LESTER SCHMIDT TO BE .30 FEET SOUTH OF THE ESTABLISHED SOUTH LINE OF THE SOUTHWEST 1/4 OF SECTION 15. WE SET A LINCOLN COUNTY MONUMENT .30 FEET NORTH OF FOUND 2" IRON PIPE, THEN REMOVED 2" IRON PIPE AND TIED OUT EAST MEANDER CORNER.

(c)(d)(e) Plan view of corner with ties to at least 4 witness monuments. If in disagreement with previously established corner, show the distances between the two corners and also indicate the ties to the disputed corner.



COORDINATES ARE REFERENCED TO THE LINCOLN COUNTY COORDINATE SYSTEM AS DEVELOPED BY THE WISCONSIN DEPARTMENT OF TRANSPORTATION AND WERE DETERMINED BY GPS OBSERVATIONS ON CONTROL POINTS AS SUPPLIED BY LINCOLN COUNTY. BEARINGS ARE REFERENCED TO MAGNETIC NORTH.

- - SET 3/4" x 30" REBAR W/ ALUM CAP 1' FROM BEARING TREE
- ⊠ - EAST MEANDER CORNER FOR SW 1/4 CORNER SET LINCOLN COUNTY MONUMENT W/ ALUM CAP

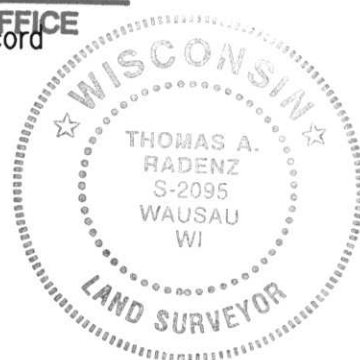
RECEIVED AT LINCOLN COUNTY COURTHOUSE THIS 21ST DAY OF December 20 01
Tom Dallen
LAND INFORMATION OFFICE

NORTH

NOT TO SCALE

(i) I, Thomas A. Radenz, RLS certify that the corner location on this record was determined by me or under my direction and control and that this U.S. Public Land Survey Monument Record is correct and complete to the best of my knowledge and belief.

Thomas A. Radenz
Signature _____ Date 12/21/01



Index No. M-14.15